

VISION - WORK - FAITH - VISION - WORK - FAITH - VISION - WORK - FAITH - VISION - WORK - FAITH - VISION

WE ARE TAYLOR

The main graphic features the text 'WE ARE TAYLOR' in a large, bold, sans-serif font. The words 'WE ARE' are white, while 'TAYLOR' is red. Each letter of the text contains a black silhouette of a different piece of construction equipment, such as excavators, bulldozers, and cranes. The entire text is set against a dark background with a subtle red glow behind the letters. Below the text is a horizontal line that reflects the silhouettes of the equipment.

Design, Engineer, Build and Service... It's What We Do!

www.taylorbigred.com

Taylor Reach Stacker Product Training (GTX/XRS)

Confidential-Taylor Machine Works, Inc - Do Not Copy or Distribute



Louisville Built Taylor Reach Stacker (Overview)



Taylor Reach Stacker Product Training (GTX/XRS)

Confidential-Taylor Machine Works, Inc - Do Not Copy or Distribute

Product Line



Excellence Models:

XRS-9972 – BABA Only

XRS-9985 – BABA Only

Port Industry/General



Excellence Long Wheelbase Model:

XHRS-1000

Port Industry/General



Electric Models:

ZRS-9972

Port Industry/General

Taylor Reach Stacker Product Training (GTX/XRS)

Confidential-Taylor Machine Works, Inc - Do Not Copy or Distribute



XRS-9972

- Capacity: First Row 4-High 99,000 lbs
- Capacity: First Row 5-High 72,000 lbs
- Wheelbase: 258"
- Spreader: Taylor 20/40 (w/Powered Pile Slope)
- Tires: 18.00x25-40 PR E4

**Note: This machine is ONLY available in BABA
(Build America Buy America) Compliant Configurations**



Taylor Reach Stacker Product Training (GTX/XRS)

Confidential-Taylor Machine Works, Inc - Do Not Copy or Distribute



XRS-9985

- Capacity: First Row 4-High 99,000 lbs
- Capacity: First Row 5-High 85,000 lbs
- Wheelbase: 258"
- Spreader: Taylor 20/40 (w/Powered Pile Slope and WTP)
- Stabilizers: Standard
- Tires: 18.00x33

**Note: This machine is ONLY available in BABA
(Build America Buy America) Compliant Configurations**



Taylor Reach Stacker Product Training (GTX/XRS)

Confidential-Taylor Machine Works, Inc - Do Not Copy or Distribute



XHRS-1000

- Excellence Series (Inland Port/Barge/Heavy Lift)
- Capacity: First Row 4-High 101,400 lbs
- Capacity: First Row 5-High 92,600 lbs
- Wheelbase: 360"
- Spreader: Taylor (w/negative lift drop neck))
- Tires: 21.00 X 35-42 PR



Taylor Reach Stacker Product Training (GTX/XRS)

Confidential-Taylor Machine Works, Inc - Do Not Copy or Distribute



ZRS-9972

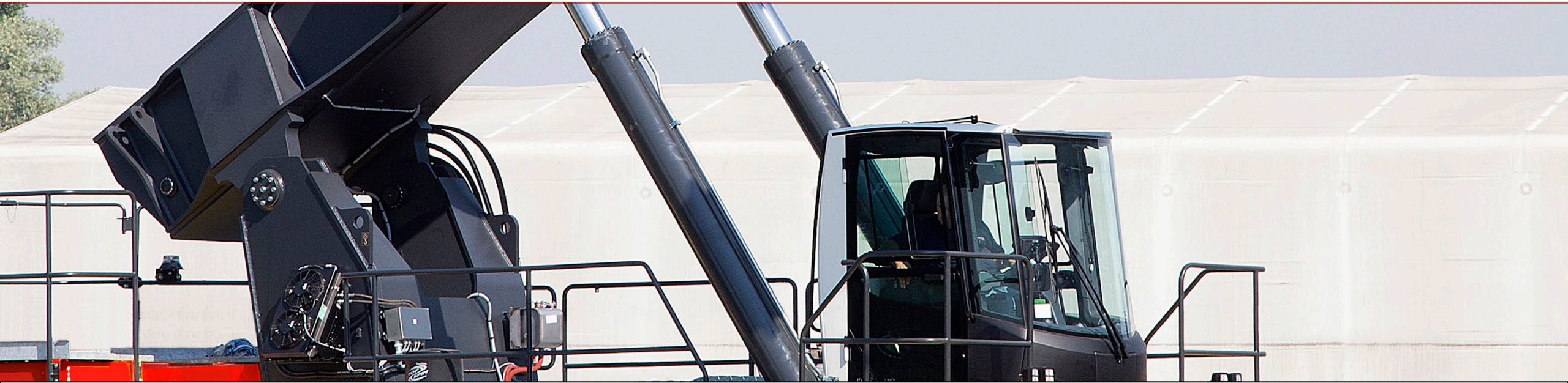
- Capacity: First Row 4-High 99,000 lbs
- Capacity: First Row 5-High 72,000 lbs
- Wheelbase: 258"
- Spreader: Taylor 20/40 (w/Powered Pile Slope)
- Tires: 18.00x25-40 PR E4
- Battery Electric (985 kWh capacity)
- Recharge in 4.5 hrs

**Note: This machine is available in BABA
(Build America Buy America) Compliant Configurations**



Taylor Reach Stacker Product Training (GTX/XRS)

Confidential-Taylor Machine Works, Inc - Do Not Copy or Distribute



(NEW) Taylor Reach Stacker Product Offerings (GTX/XRS)



Taylor Reach Stacker Product Training (GTX/XRS)

Confidential-Taylor Machine Works, Inc - Do Not Copy or Distribute

Product Line



Global Model: *Port Industry/General*

GTX-9968

«Global»

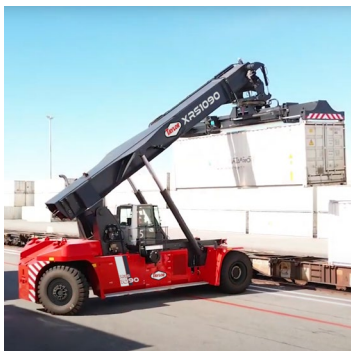


Excellence Models: *Port Industry/General*

XRS-1075

XRS-1080

«Excellence»



Excellence Long Wheelbase Models: *Intermodal/Rail*

XRS-1090

XRS-8877

«Excellence »

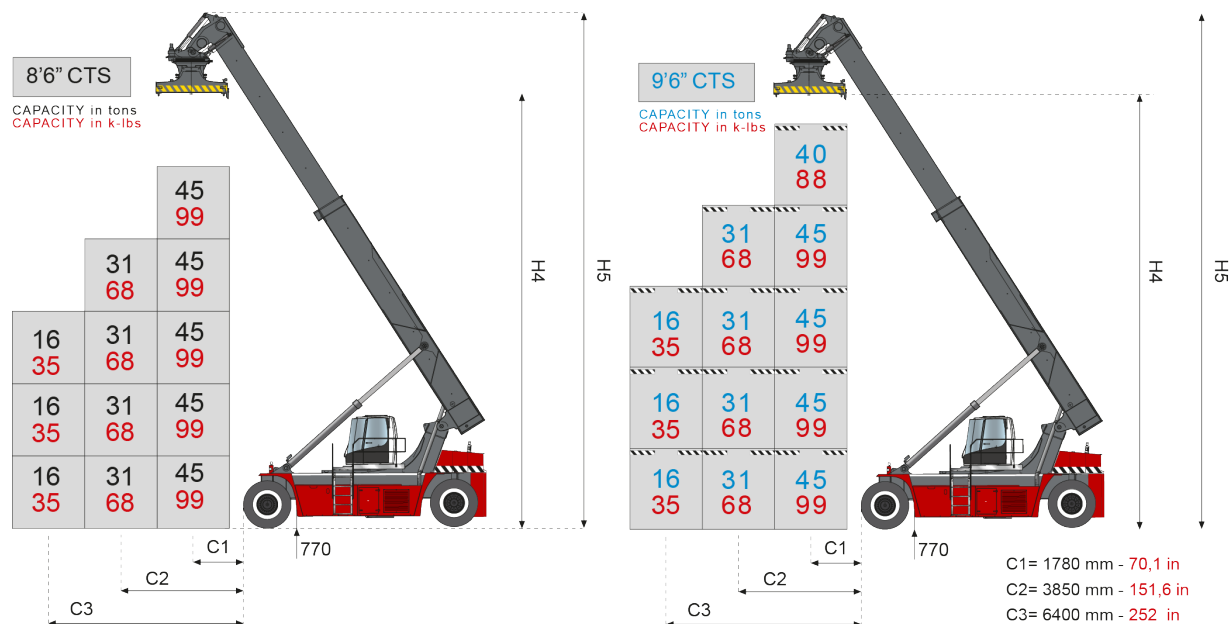
Taylor Reach Stacker Product Training (GTX/XRS)

Confidential-Taylor Machine Works, Inc - Do Not Copy or Distribute

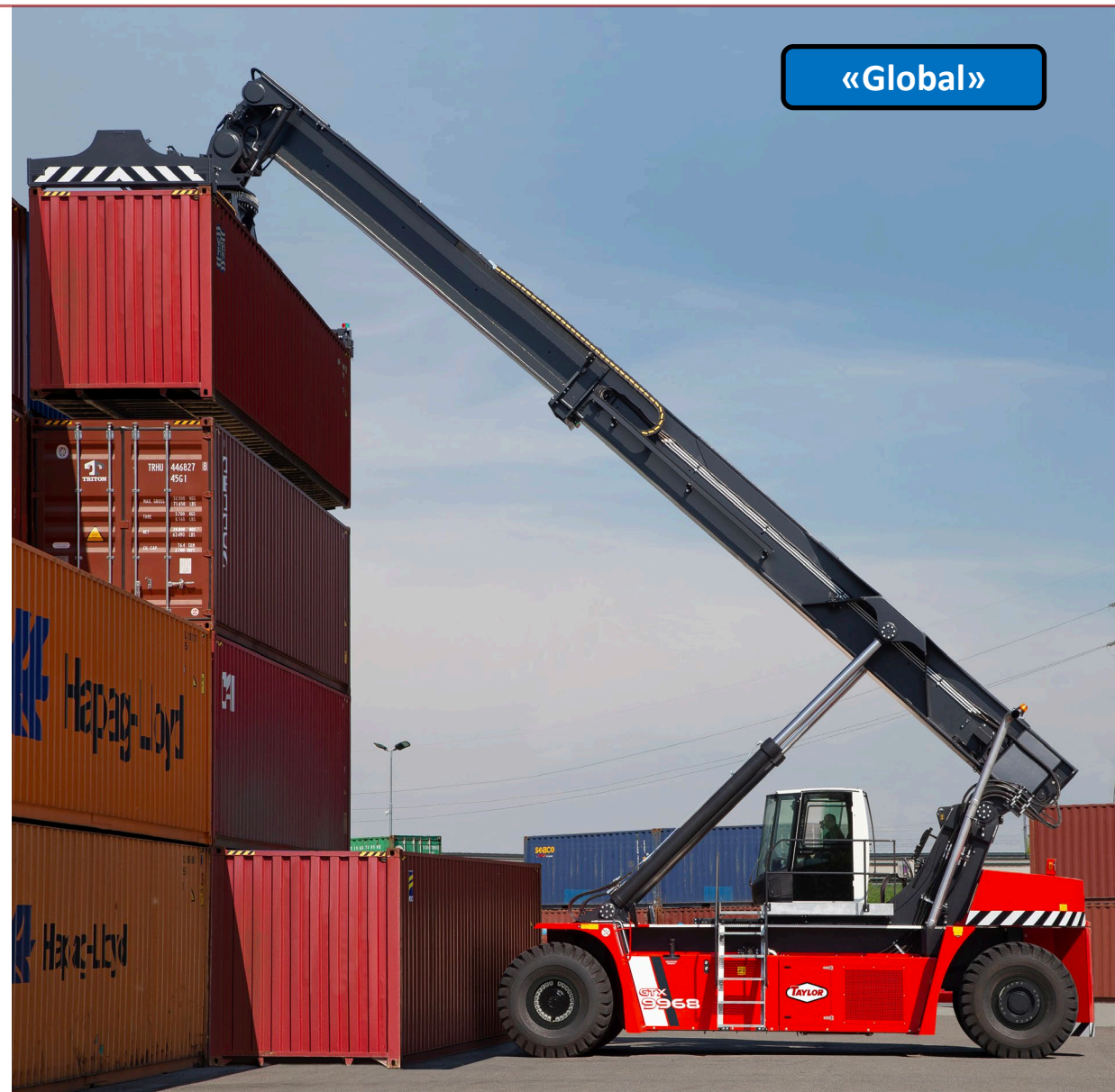


GTX-9968

- Capacity: First Row 4-High 99,000 lbs
- Capacity: First Row 5-High 88,000 lbs
- Wheelbase: 256"
- Spreader: Elme 20/40 (w/Powered Pile Slope)
- Stabilizers: No
- Tires: 18.00x25



«Global»



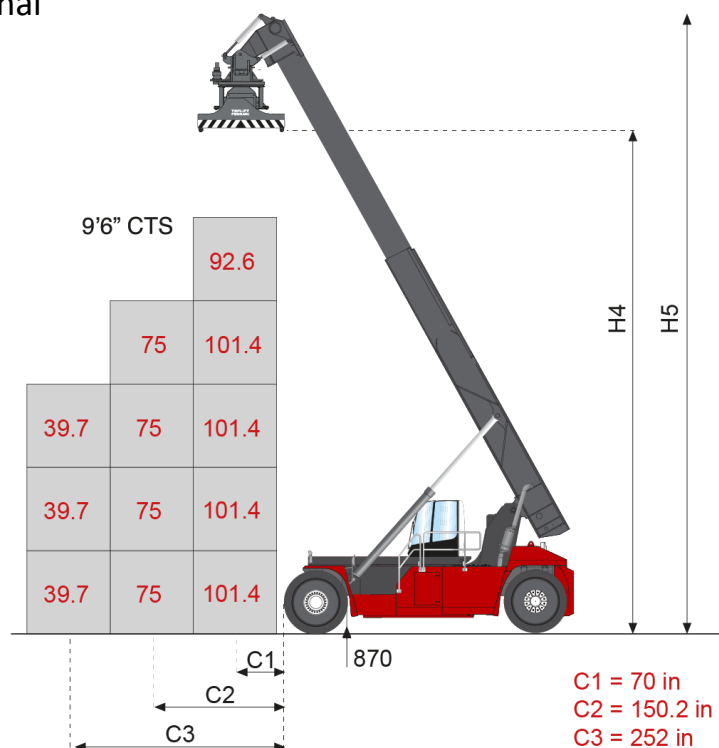
Taylor Reach Stacker Product Training (GTX/XRS)

Confidential-Taylor Machine Works, Inc - Do Not Copy or Distribute



XRS-1075

- Excellence Series
- Capacity: First Row 4-High 101,400 lbs
- Capacity: First Row 5-High 92,000 lbs
- Wheelbase: 256"
- Spreader: Taylor/CVS 20/40 (w/Powered Pile Slope)
- Stabilizers: Optional
- Tires: 18.00x33



«Ecvellence»



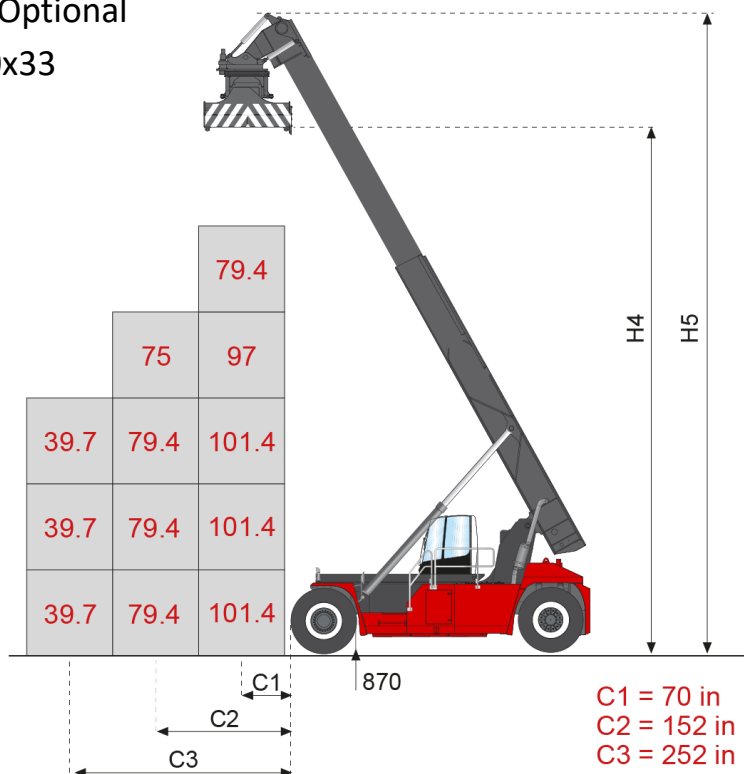
Taylor Reach Stacker Product Training (GTX/XRS)

Confidential-Taylor Machine Works, Inc - Do Not Copy or Distribute



XRS-1080

- Excellence Series
- Capacity: First Row 4-High 97,000 lbs
- Capacity: First Row 5-High 79,400 lbs
- Wheelbase: 256"
- Spreader: Taylor/CVS 20/40 (w/Powered Pile Slope & WTP)
- Stabilizers: Optional
- Tires: 18.00x33



Taylor Reach Stacker Product Training (GTX/XRS)

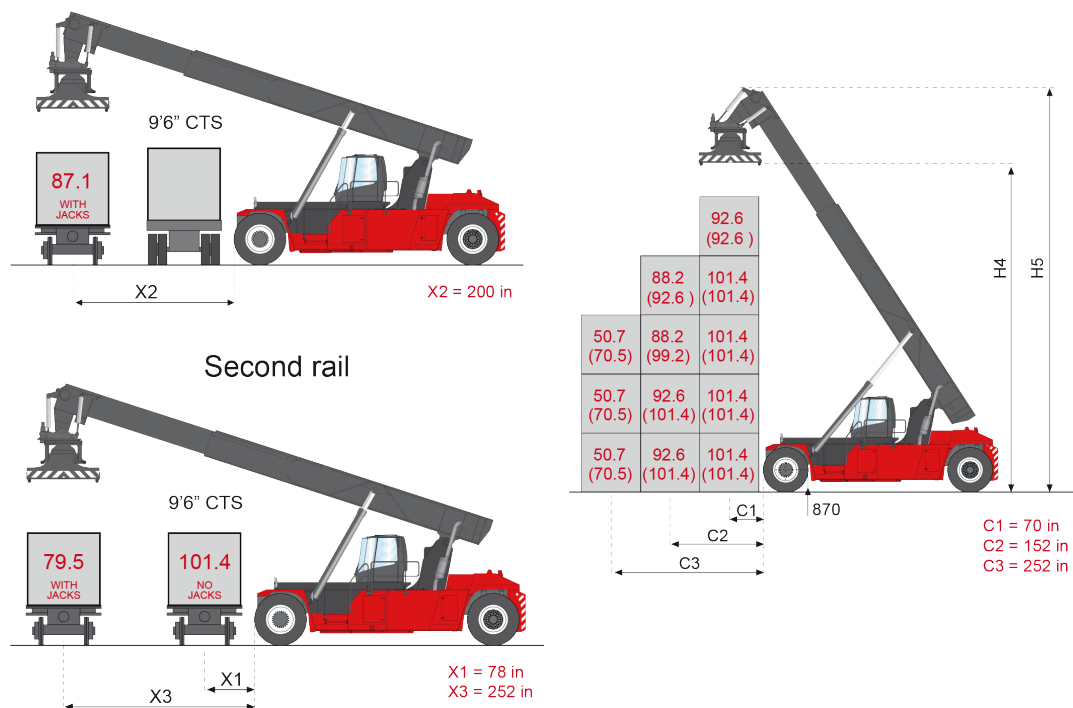
Confidential-Taylor Machine Works, Inc - Do Not Copy or Distribute



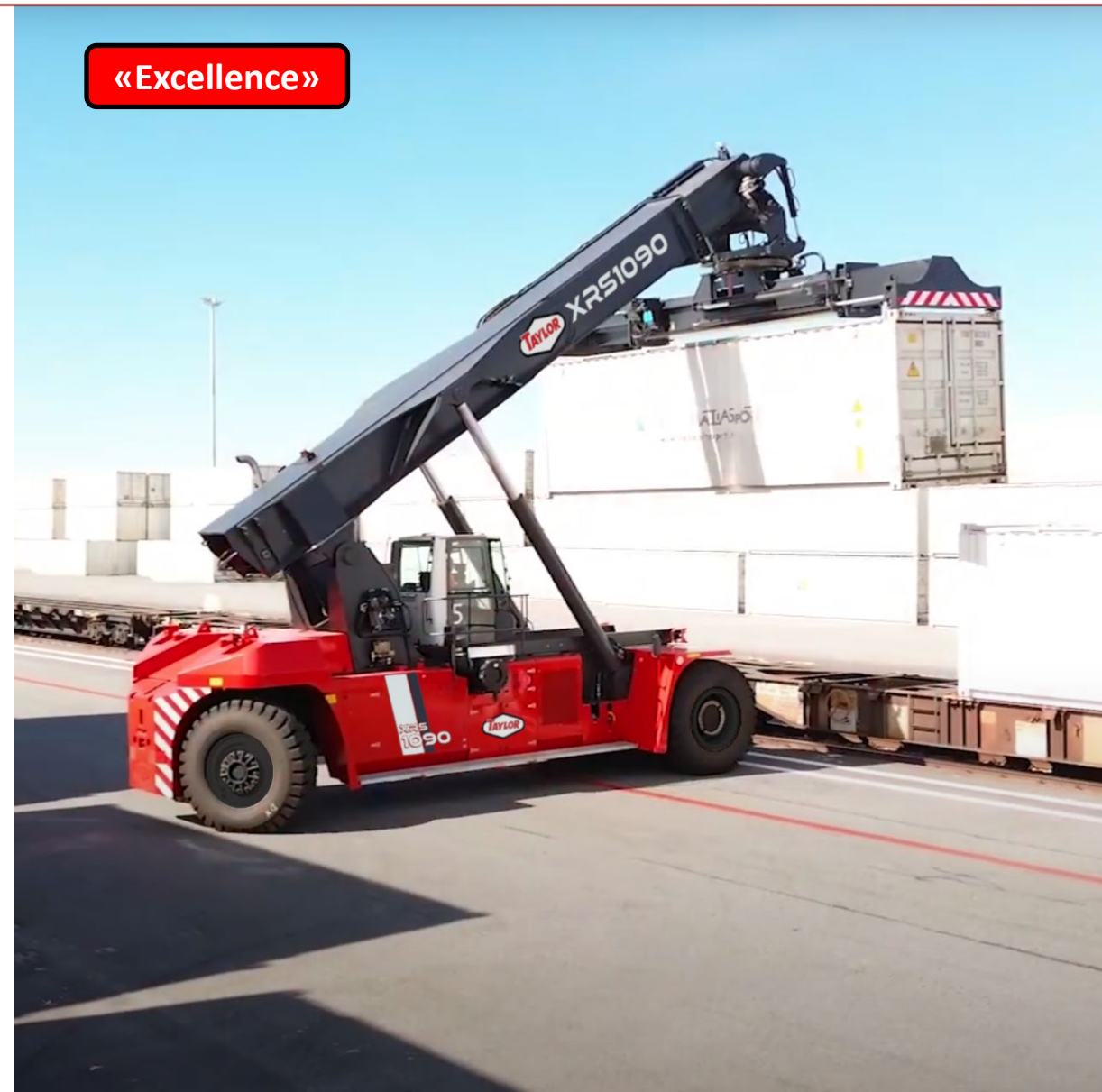
XRS-1090

- Excellence Series (Rail Industry)
- Capacity: First Row 4-High 101,400 lbs
- Capacity: First Row 5-High 92,600 lbs
- Wheelbase: 295" (Tires: 18.00x33)
- Spreader: Taylor/CVS 20/40 (w/Powered Pile Slope & WTP)
- Stabilizers: Standard

One rail over one chassis



«Excellence»



Taylor Reach Stacker Product Training (GTX/XRS)

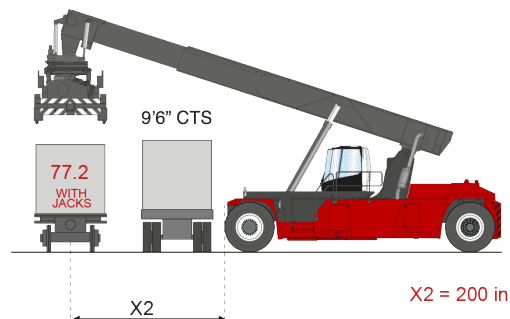
Confidential-Taylor Machine Works, Inc - Do Not Copy or Distribute



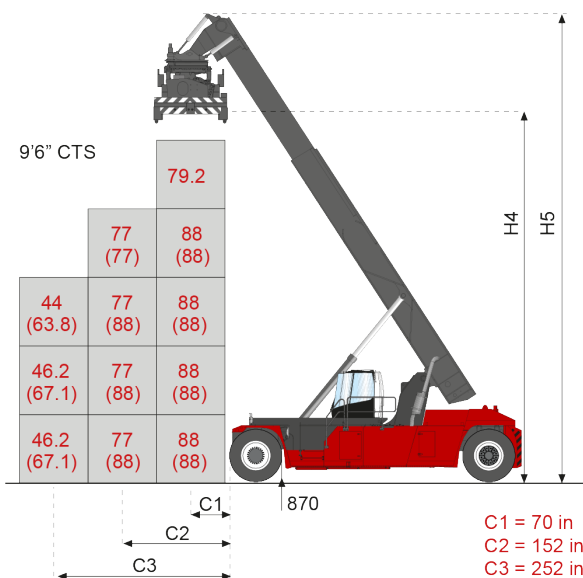
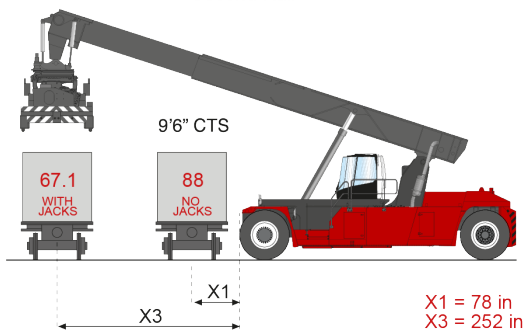
XRS-8877

- Excellence Series (Rail Industry)
- Capacity: First Row 4-High 88,00 lbs
- Capacity: First Row 5-High 79,200 lbs
- Wheelbase: 315" (Tires: 18.00x33)
- Spreader: Taylor/CVS 20/40 (w/PPS & WTP & Trailer Legs)
- Stabilizers: Standard

One Rail Over One Chassis



Second Rail



Taylor Reach Stacker Product Training (GTX/XRS)

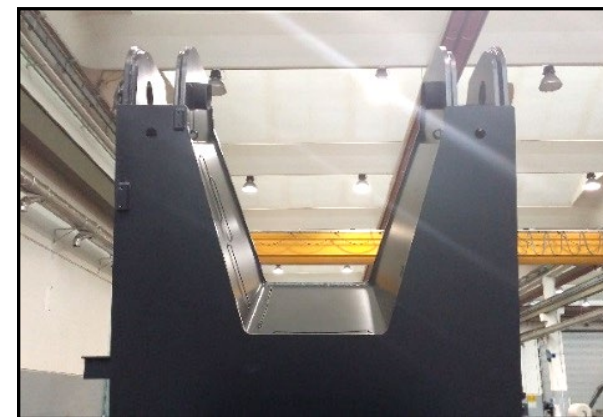
Confidential-Taylor Machine Works, Inc - Do Not Copy or Distribute

Chassis DETAILS



GTX-**Excellence** Reachstackers

- Boxed welded main beam structure
- Features high resistance steel (St355)
- Designed for 1,200,000 work cycles at nominal load (Din 15018 - H2B4 certified)
- Extra strong boom tower structure
- Cross reinforcing box at lift cylinders area (greatly enhances strength of front structure).
- Narrow body design



Taylor Reach Stacker Product Training (GTX/XRS)

Confidential-Taylor Machine Works, Inc - Do Not Copy or Distribute



Understanding The *Differences...*

GTX - Excellence Reachstacker

«Excellence»



- GTX - Global Reachstacker

«Global»



Taylor Reach Stacker Product Training (GTX/XRS)

Confidential-Taylor Machine Works, Inc - Do Not Copy or Distribute



«Global» Range & «Premium» Range

«Global»

Model (Global)	1° Row	2° Row	3° Row	Wheelbase	Tires Size	Jacks	Spreader Type	APPLICATION
	Capacity	Capacity	Capacity					
GTX-9968	45 ton	31 ton	17 ton	256" (6.5 m)	18.00x25	Not Available	Elme w/PPS	Container Yards

«Excellence»

Model (Premium)	1° Row	2° Row	3° Row	W.Base	Tires Size	Jacks	Spreader Type	APPLICATION
	Capacity (no jacks app)	Capacity (no jacks app)	Capacity (jacks app)					
XRS-1075	46 ton	34 ton	26 ton	256" (6.5 m)	18.00x33	Option	CVS w/PPS	Container Yards
XRS-1080	46 ton	36 ton	21 ton	256" (6.5 m)	18.00x33	Option	CVS w/WTP	Container Yards
XRS-1090	46 ton	41 ton	25 ton	295" (7.5 m)	18.00x33	Option	CVS w/WTP	Railway and Barge Handling
XRS-8877	46 ton	34 ton	28 ton	315" (8.0 m)	18.00x33	Option	Elme w/T&B	

Taylor Reach Stacker Product Training (GTX/XRS)

Confidential-Taylor Machine Works, Inc - Do Not Copy or Distribute



Item	«Excellence» XRS-1075	«Global» GTX-9968	Notes
Stacking Ability under spreader (1st row)	6 x 8'6" / 5 x 9'6" (if E)	5 x 9'6" / 5 x 8'6" ELME	"P" has a longer and stronger Boom that would enable the machine to stack 6x8'6" in the 1st row and 5 x9'6" in the 2nd row if equipped with the ELME spreader
Stacking Ability under spreader (2nd row)	5 x 9'6" / 5 x 9'6" (if E)	5 x 8'6" / 4 x 9'6" ELME	
Capacity in 1st row	46 Ton	45 Ton	"V" is fitted with ELME Spreader- "P" comes with a CVS-TAYLOR spreader that is a lot heavier and stronger than the ELME and can be structurally guaranteed for 20.000 w/h.
Capacity in 2nd row	34 Ton	31 Ton	
Wheelbase	6500 mm	6500 mm	The chassis of "P" is the same for the whole range, including the highest capacities ones (with back extension and front jacks mounting). "V" has a purpose dedicated chassis
Front Width	4100 mm	4100 mm	
Drive Axle	Kessler D102	Kessler D102	
Steer Axle	Sandwich Type	Monoslab Type	Same
Rubber shock absorbers on steer axle	YES	NO	
Tires Size	18.00x33	18.00x25	
Tires brand (standard)	Galaxy	Galaxy	Same
Engine	Cummins X12 (Tier 5)	Cummins X12 (Tier 5)	Same
Transmission	DANA TE30	DANA TE30	Same
Main Hydraulics (Main Pumps, Distribution Valve)	Bosh-Rexroth	Bosh-Rexroth	Same
Acessorial Hydraulics (Coolers, valves, etc..)	CVS standard	CVS Standard	Same
Electric System	CVS standard	CVS Standard	Same
Electronics (on board computer + LMI)	CVS standard	CVS Standard	Same
Lights	CVS standard	CVS Standard	Same
Cabin	CVS Aria (2 doors)	CVS Aria (2 doors)	Same
Joystick	Elobau	Elobau	Same
Spreader rotation ability	+105/-95 deg	+105/-95 deg	Same
Spreader Hydraulic Motors / Gear Reducers w/brakes	2/2	2/2	Same

Taylor Reach Stacker Product Training (GTX/XRS)

Confidential-Taylor Machine Works, Inc - Do Not Copy or Distribute

Boom DETAILS



«Global»

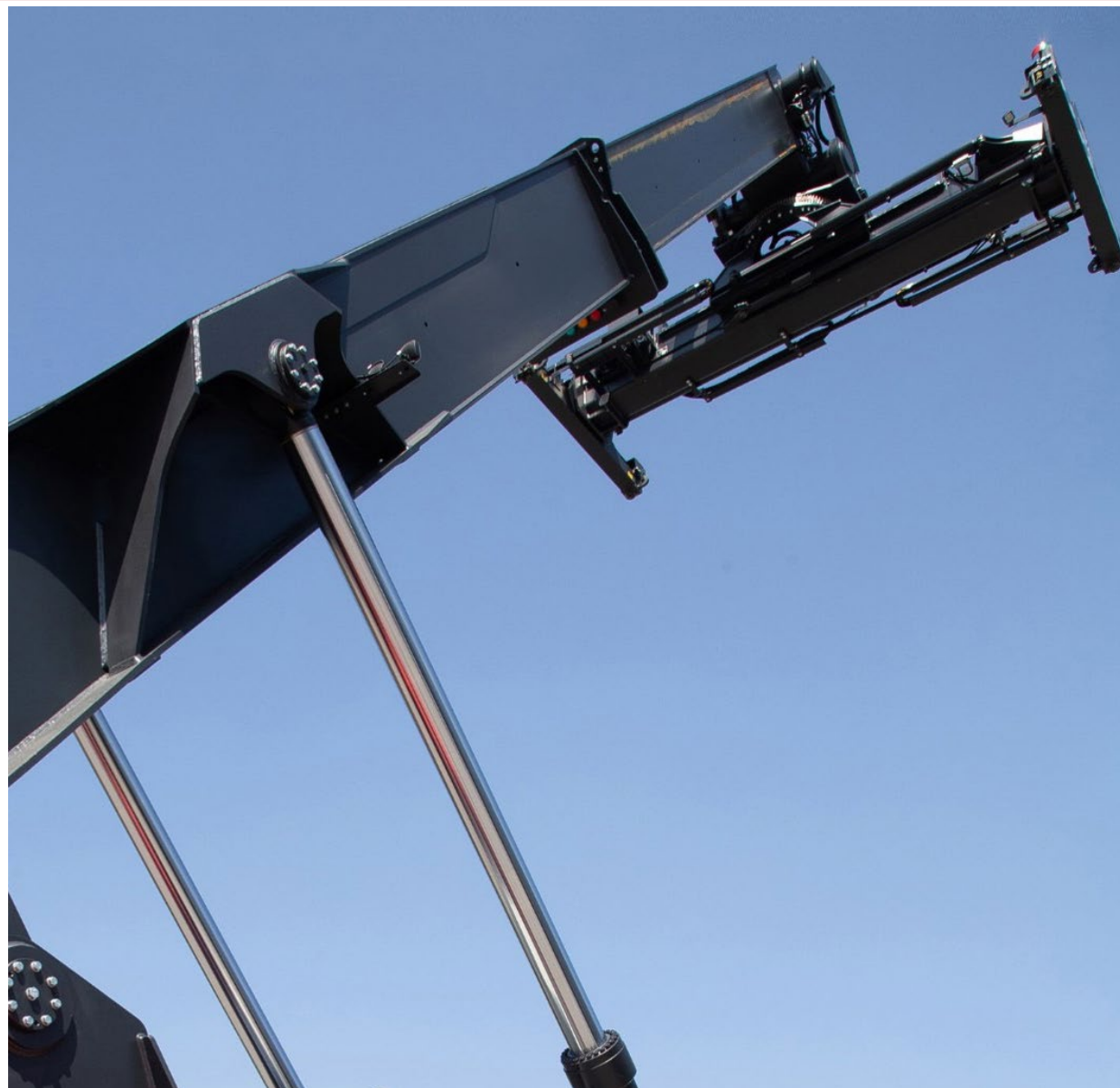
GTX-9968 Global Reachstacker

- 5 x 8'6" Stacking Ability First Row
- 5 x 9'6" Stacking Ability First Row

«Excellence»

GTX-Excellence Reachstackers

- 5 x 8'6" Stacking Ability First Row
- 6 x 8'6" Stacking Ability First Row
(only when "special" equipped with ELME spreader)
- 5 x 9'6" Stacking Ability First Row
- Telescopic section made of St690 steel
- Designed for 1,200,000 work cycles at nominal load (Din 15018 - H2B4 certified)
- Greaseable long life bushings at chassis joints
- Two lifting cylinders and one telescopic cylinder
- Opposite action spreader dumping cylinders



Taylor Reach Stacker Product Training (GTX/XRS)

Confidential-Taylor Machine Works, Inc - Do Not Copy or Distribute

Boom Differences...



TELESCOPIC BOOM IN ST690
(yield point at 70 kg/mm²)



TELESCOPIC BOOM IN ST355
(yield point at 50 kg/mm²)



Both BOOMS have the SAME Lifting Cylinders

Taylor Reach Stacker Product Training (GTX/XRS)

Confidential-Taylor Machine Works, Inc - Do Not Copy or Distribute

Boom Differences...

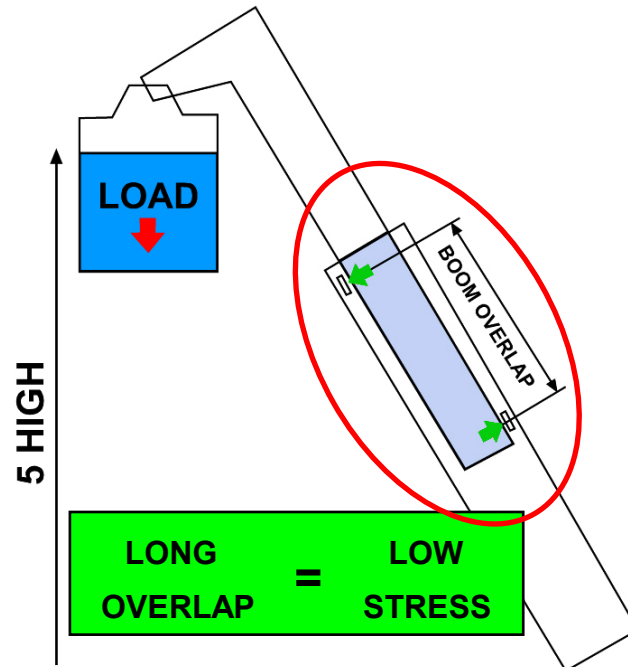


GTX-Excellence Reachstackers

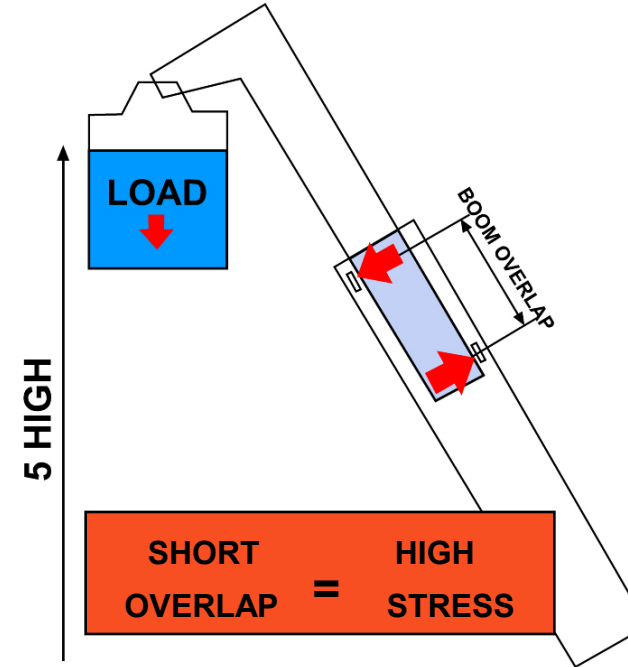
Reach Stackers with long reach boom (longer overlap between sections) suffer less stress than booms with shorter overlap (even when stacking at lower heights).

Long Reach Boom

«Excellence»



«Global»



Similar to competitors

«Regular» Boom

Taylor Reach Stacker Product Training (GTX/XRS)

Confidential-Taylor Machine Works, Inc - Do Not Copy or Distribute

Differences...



Designed to accept Stabilizers (Jacks)



Not designed to accept Stabilizers (Jacks)



Taylor Reach Stacker Product Training (GTX/XRS)

Confidential-Taylor Machine Works, Inc - Do Not Copy or Distribute

Differences...



Excellence Chassis Available in (3) Wheelbase Configurations



XRS-1075 = 256" W.B.
XRS-1080 = 256" W.B.
XRS-1090 = 295" W.B.
XRS-8877 = 315" W.B.



Only (1) Wheelbase available



Taylor Reach Stacker Product Training (GTX/XRS)

Confidential-Taylor Machine Works, Inc - Do Not Copy or Distribute

Differences...



Inclined Stair With Platform



Wide Ladder Style Stair



Taylor Reach Stacker Product Training (GTX/XRS)

Confidential-Taylor Machine Works, Inc - Do Not Copy or Distribute

Differences...



Optional Stairs on Front Mudguard



Front Mudguard Stairs **Not** Available



Taylor Reach Stacker Product Training (GTX/XRS)

Confidential-Taylor Machine Works, Inc - Do Not Copy or Distribute

Differences...



When cab is in full forward position, both doors will fully open, and operator can exit machine



2200 mm Hydraulic Moving Cab

When cab is in full forward position, doors **will not** open and drop-down rear window would be utilized for exit



2000 mm Hydraulic Moving Cab

Taylor Reach Stacker Product Training (GTX/XRS)

Confidential-Taylor Machine Works, Inc - Do Not Copy or Distribute

Differences...



Sandwich (I-beam) style steer axle



Mono-beam steer axle



The two Steer Axles share the SAME STEERING CYLINDER

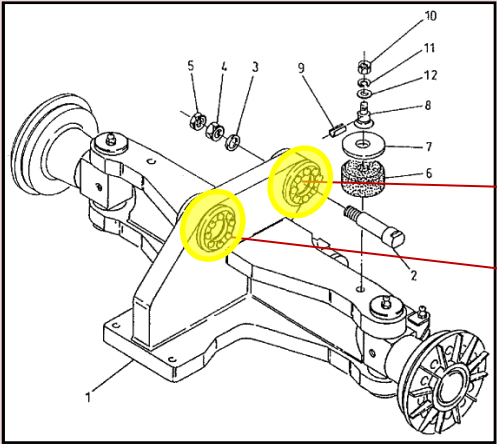
Taylor Reach Stacker Product Training (GTX/XRS)

Confidential-Taylor Machine Works, Inc - Do Not Copy or Distribute

Differences...

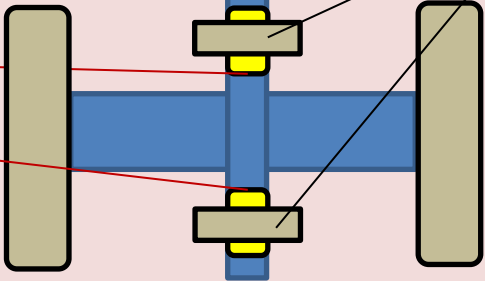


(Hard) Rubber Bushing



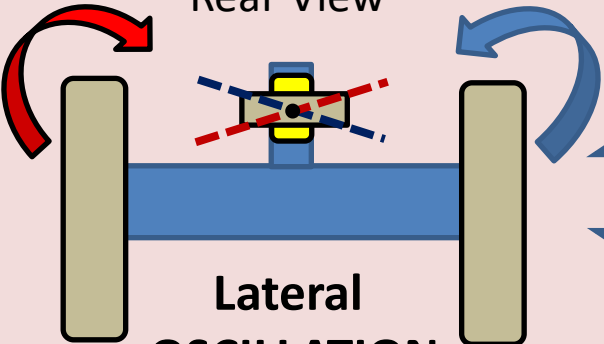
«Excellence»

Top View



Pin

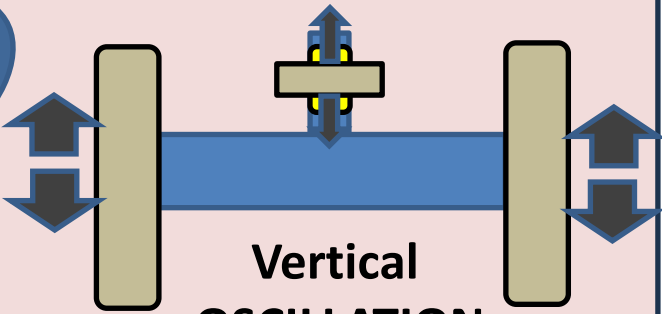
Rear View



Lateral
OSCILLATION

YES

Rear View



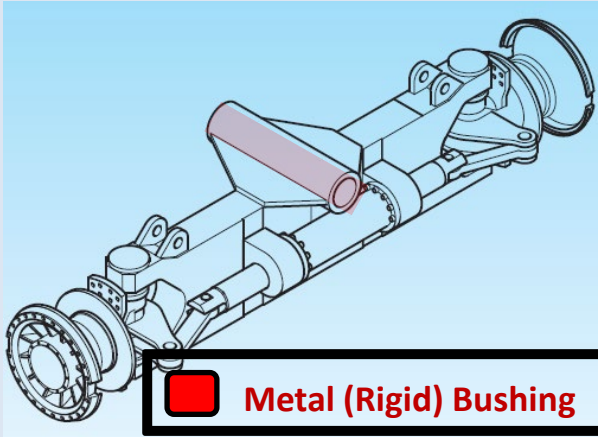
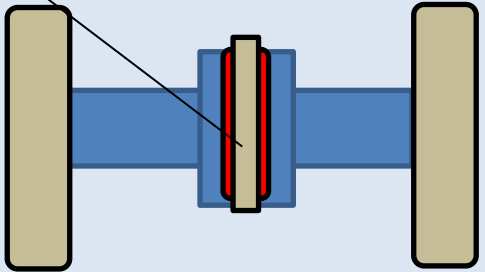
Vertical
OSCILLATION

YES

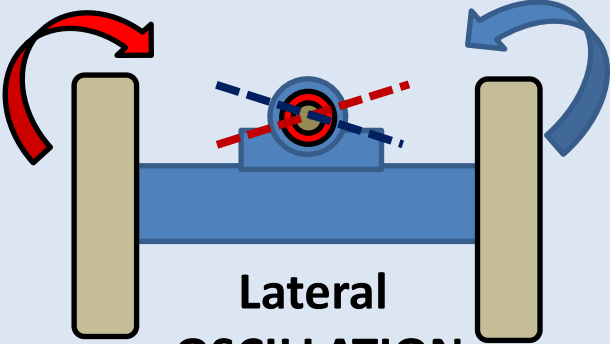
Axle Mounting

«Global»

Top View

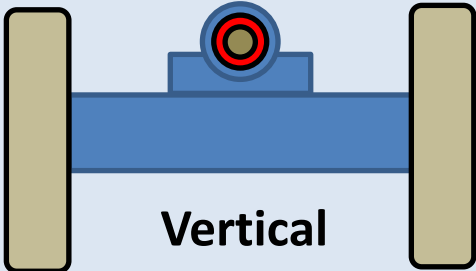


Metal (Rigid) Bushing



Lateral
OSCILLATION

YES



Vertical
OSCILLATION

NO

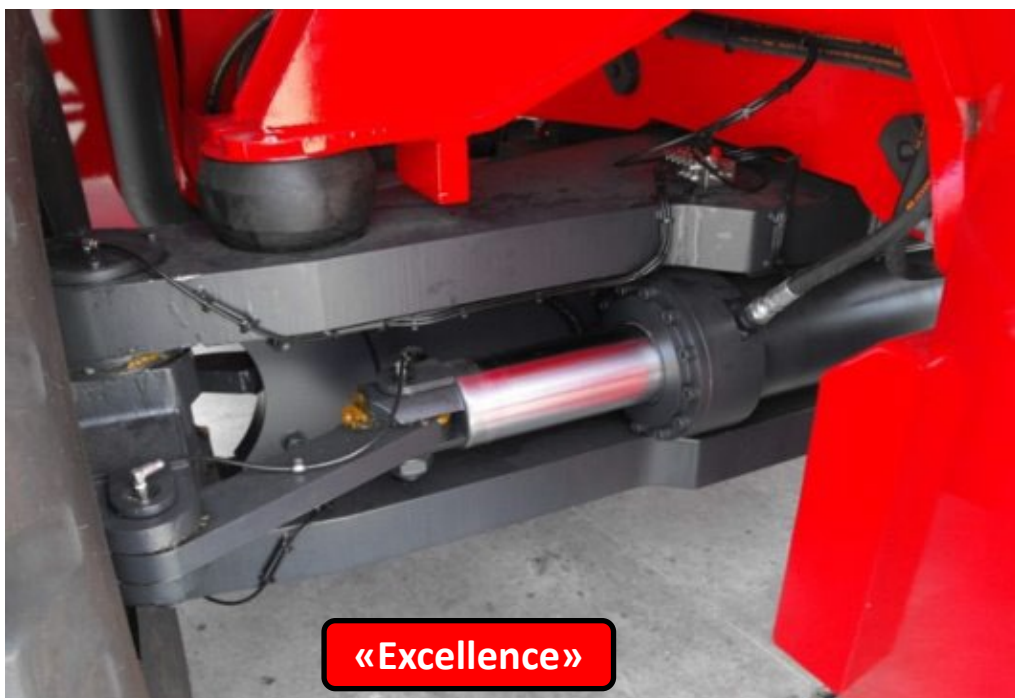
Taylor Reach Stacker Product Training (GTX/XRS)

Confidential-Taylor Machine Works, Inc - Do Not Copy or Distribute

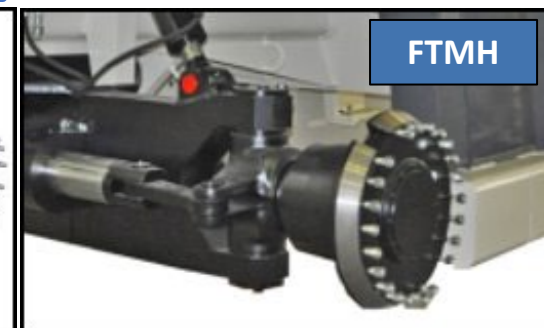
Differences...



GTX Excellence Sandwich(I-Beam) style is industry leader



GTX Global Mono-Beam Steer Axle is industry standard



Taylor Reach Stacker Product Training (GTX/XRS)

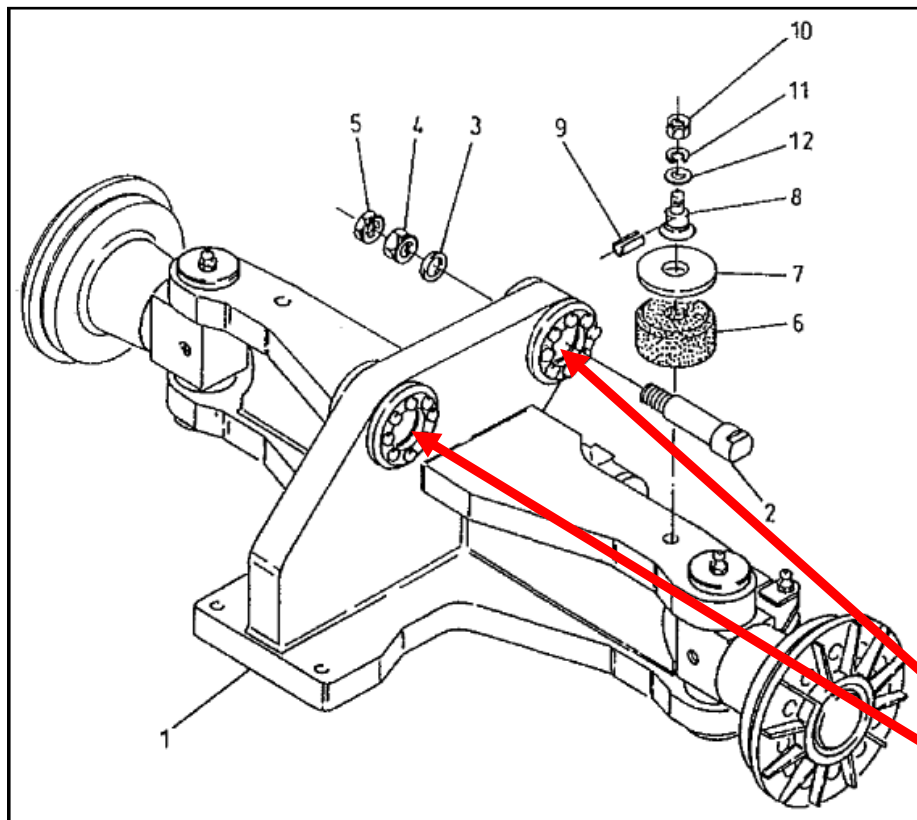
Confidential-Taylor Machine Works, Inc - Do Not Copy or Distribute

Differences...



«Excellence»

GTX Excellence Reachstackers: Additional Information on Steer Axle Mounting



Chassis mount through Cylindrical Hard Rubber Bearings

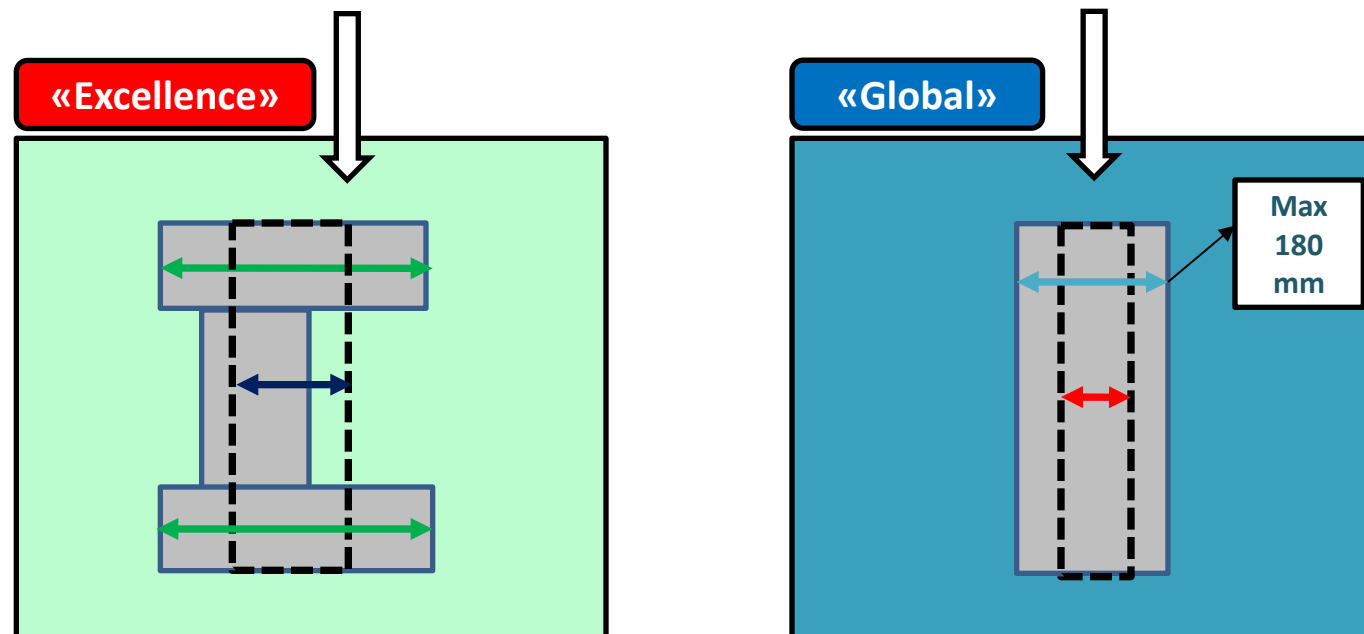
Taylor Reach Stacker Product Training (GTX/XRS)

Confidential-Taylor Machine Works, Inc - Do Not Copy or Distribute

Differences...



GTX Excellence Reachstackers: Additional Information on Steer Axle Strength



The "Sandwich Type" Steer Axle structure design enables the use of larger King Pins than what Mono-Slab Structure designs allows. While both are good axles, the "Sandwich Type" axle is designed to a higher duty cycle.

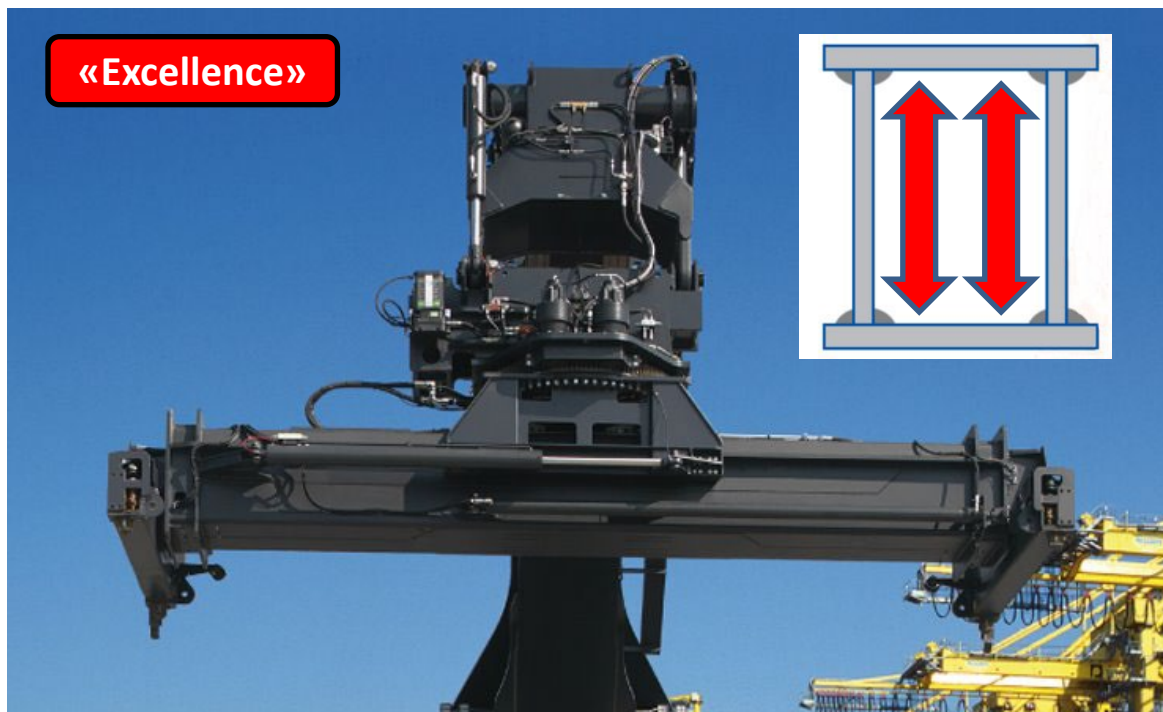
Taylor Reach Stacker Product Training (GTX/XRS)

Confidential-Taylor Machine Works, Inc - Do Not Copy or Distribute

Differences...

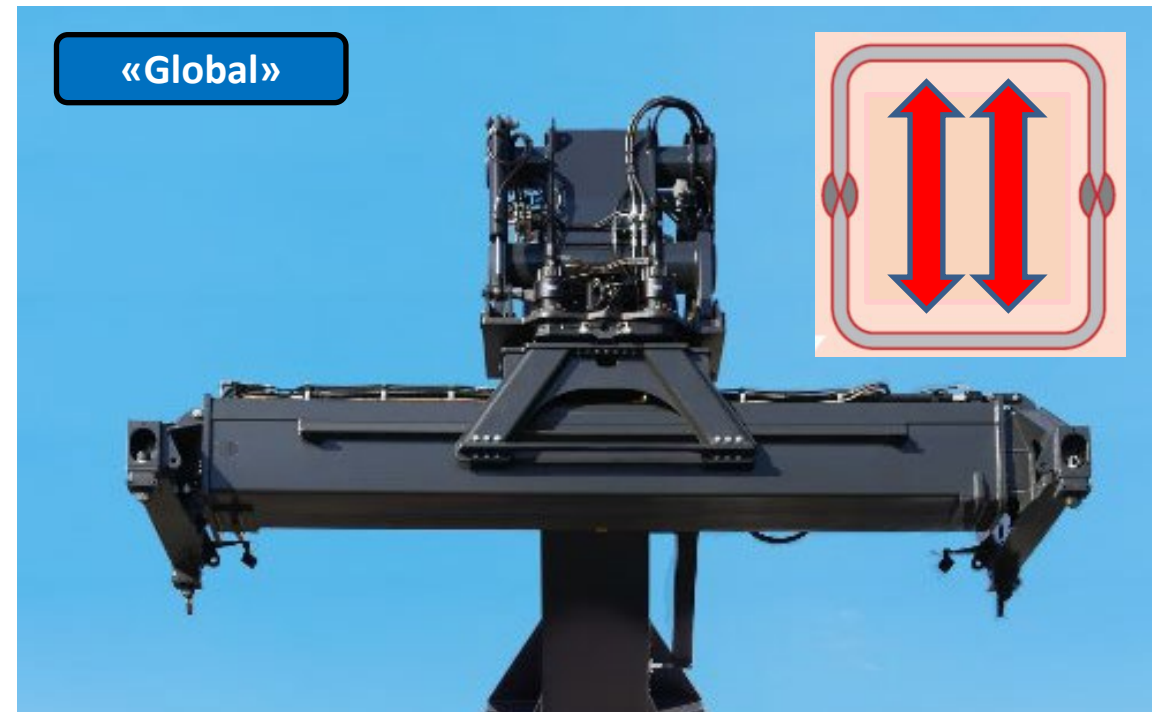


CVS built **TAYLOR Spreader** w/reinforced structure



BOXED WELDED BEAMS, IN St690

ELME Innovation Spreader



"U" BENT JOINT WELDED BEAMS, IN St335

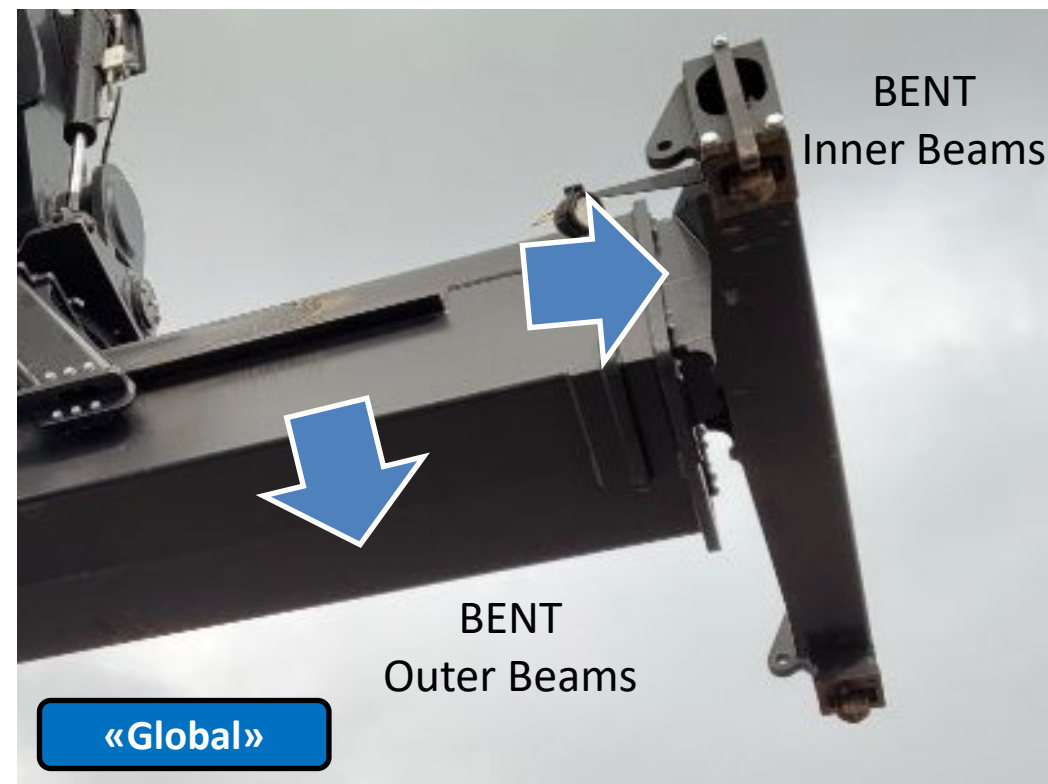
Taylor Reach Stacker Product Training (GTX/XRS)

Confidential-Taylor Machine Works, Inc - Do Not Copy or Distribute

Differences...



ELME Innovation Spreader (on the GTX [Global](#) Reachstacker) comes with BENT Outer (fixed) and Inner (Telescopic) beam.





Additional Information on Global Spreader



«Global»

GTX-9968 ELME 817 Innovation Spreader

Telescopic for 20'-40'	30' stop (OPTION)
Rotation +195° / - 105°	Sideshift: + / - 800 mm
+ / - 3° mechanic slope	Hyd. Slope +/-6° (OPT.)
Full Floating Twistlocks	Twistlock Lights (STD.)
Electrical Safeties	Mechanical Safeties

Taylor Reach Stacker Product Training (GTX/XRS)

Confidential-Taylor Machine Works, Inc - Do Not Copy or Distribute

Differences...

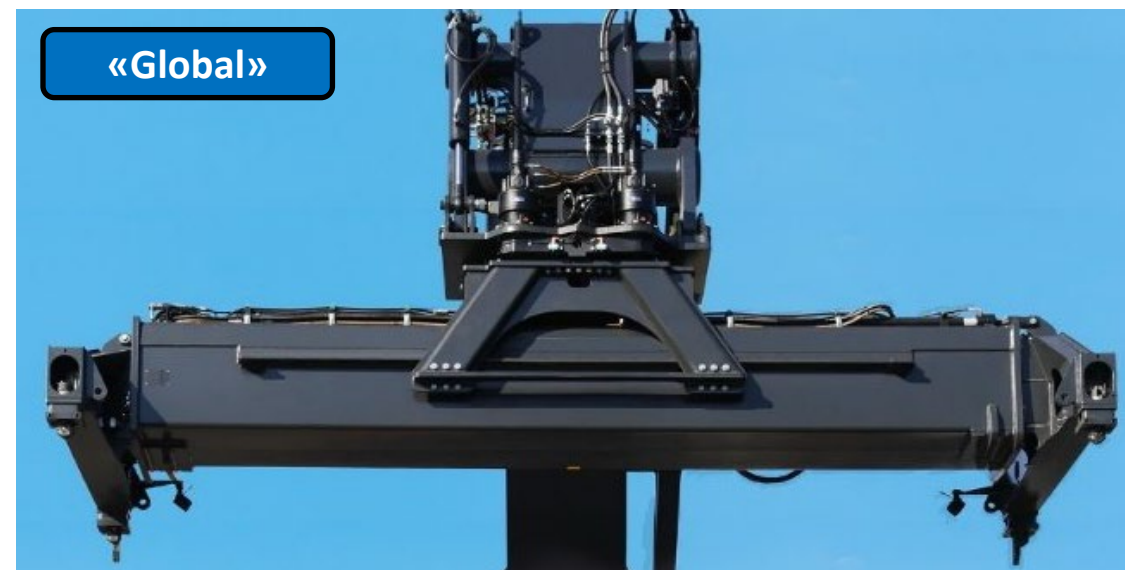
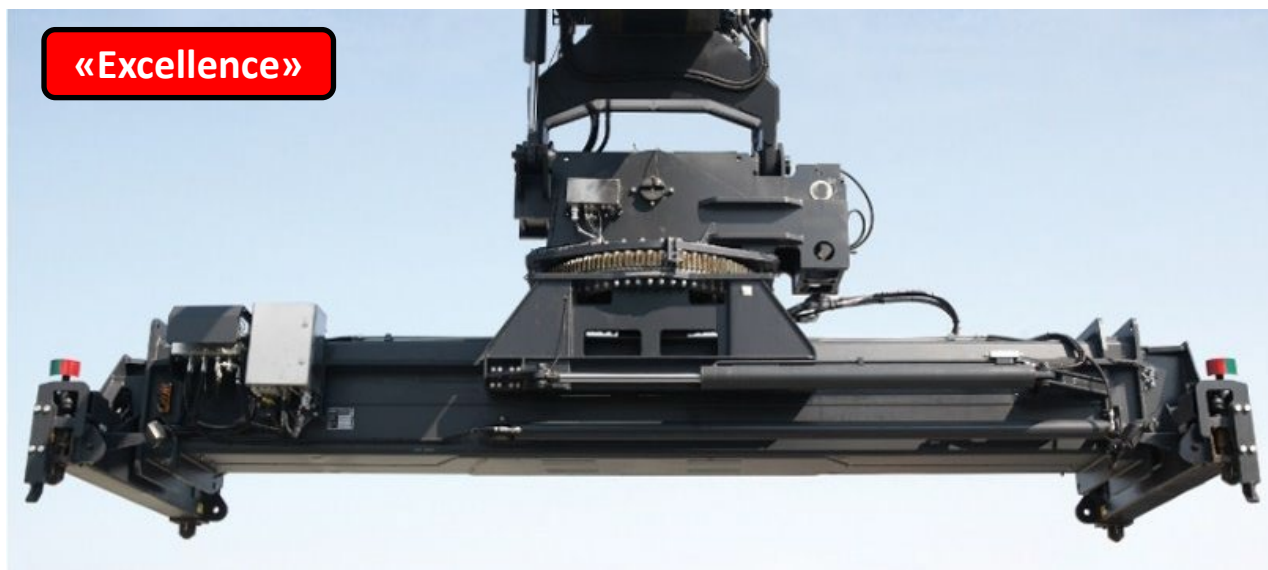


CVS built **TAYLOR** Spreader w/reinforced structure

- Two lateral side-shift cylinders
- Four twist-lock cylinders (one x each twist lock)
- Upper independent pile slope structure
- Alluminum IP67 electric boxes and connectors
- -40 deg multi-polar cabling
- Proportional hydraulic controls

ELME Innovation Spreader

- One upper mounted side-shift cylinder
- Two twist-lock cylinders with connecting rod
- Pile slope structure integrated in dolly
- Plastic electric boxes and connectors
- Multi-wire in plastic conduit -20 deg wiring
- On/Off Hydraulic controls



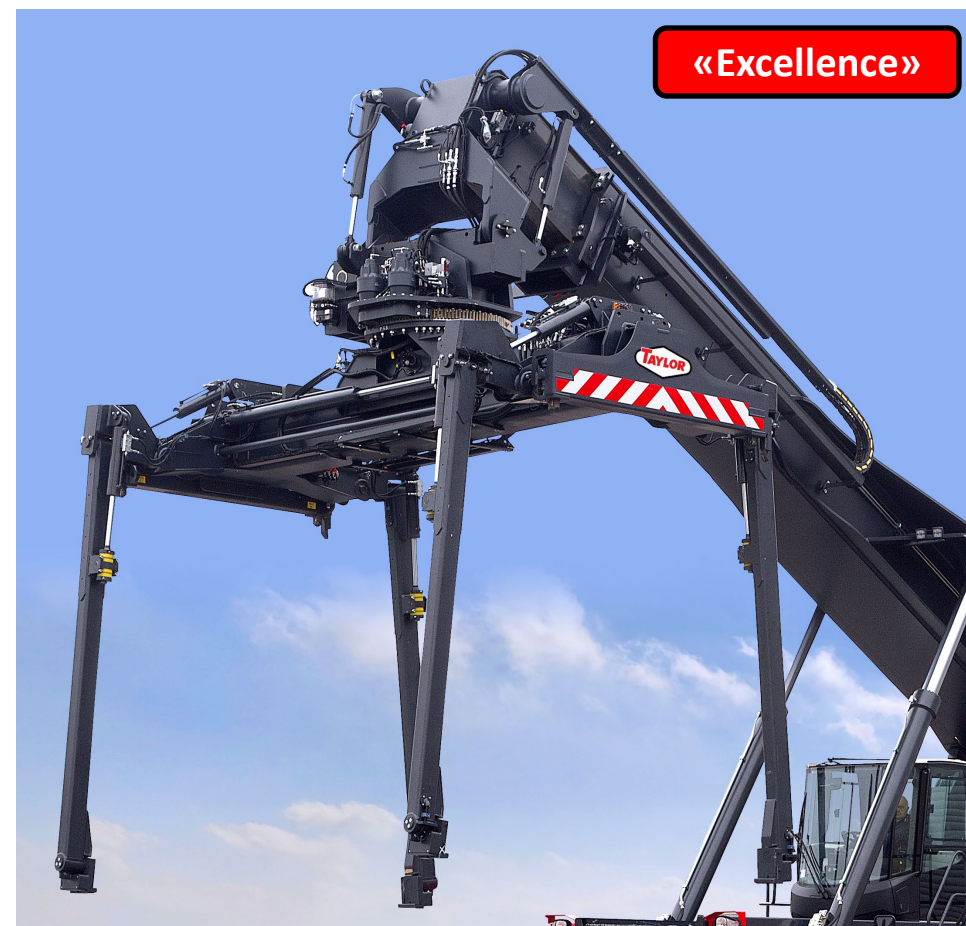
Taylor Reach Stacker Product Training (GTX/XRS)

Confidential-Taylor Machine Works, Inc - Do Not Copy or Distribute

Differences...



XRS-8877 specific Piggy-Pack Spreader: This 877-ELME built spreader features PPS (powered-pile-slope) and top/bottom pick capabilities (trailer legs).



Taylor Reach Stacker Product Training (GTX/XRS)

Confidential-Taylor Machine Works, Inc - Do Not Copy or Distribute

Differences...



SPECIAL CONFIGURATION (special order)

When special ordered with the ELME spreader, the GTX **Excellence** Reachstackers (**XRS-1075 & XRS-1080**) can stack 8' 6" boxes 6-high.

...The standard Taylor/CVS spreader only stacks 5-high



Taylor Reach Stacker Product Training (GTX/XRS)

Confidential-Taylor Machine Works, Inc - Do Not Copy or Distribute



Understanding The *Commonalities*...

GTX - *Excellence* Reachstacker



GTX - *Global* Reachstacker



Taylor Reach Stacker Product Training (GTX/XRS)

Confidential-Taylor Machine Works, Inc - Do Not Copy or Distribute

...Commonalities



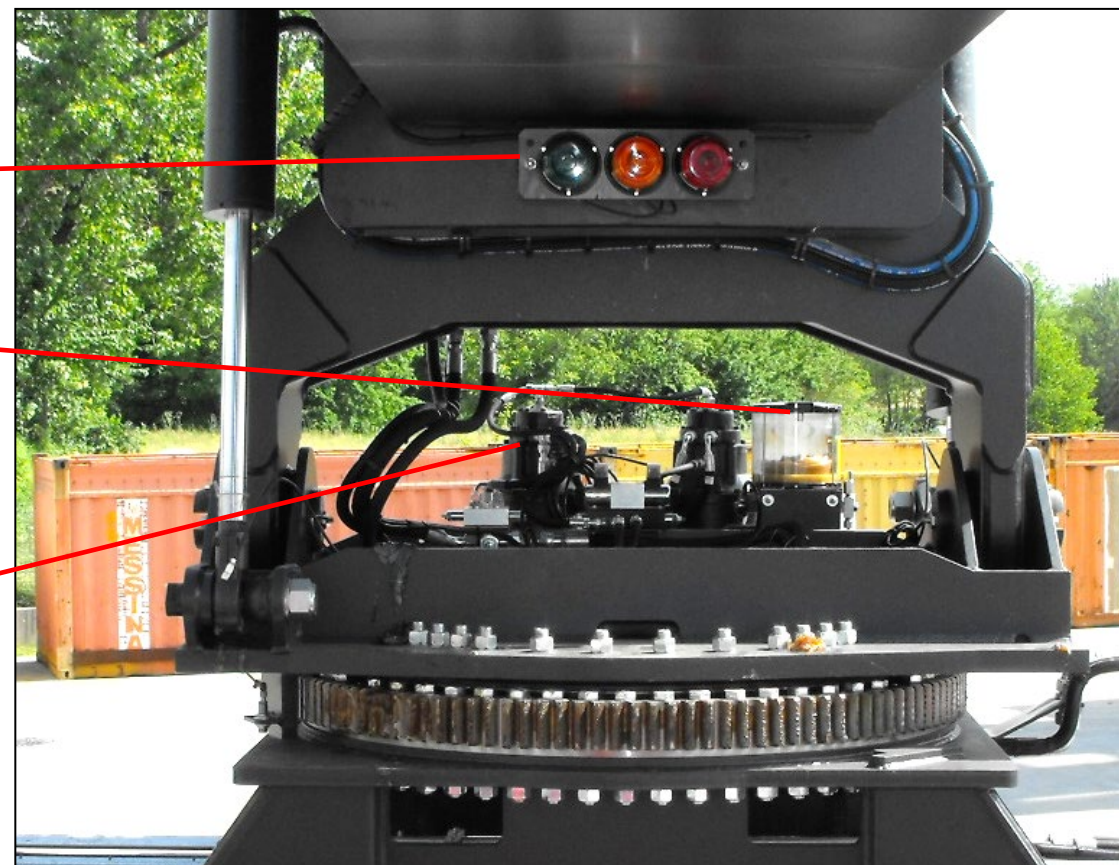
«Global»

«Excellence»

SPREADER STATUS LED LIGHTS

SPREADER AUTO LUBE SYSTEM
(Option)

TWIN ROTATING
MOTORS & BRAKES
on twin reducers



Taylor Reach Stacker Product Training (GTX/XRS)

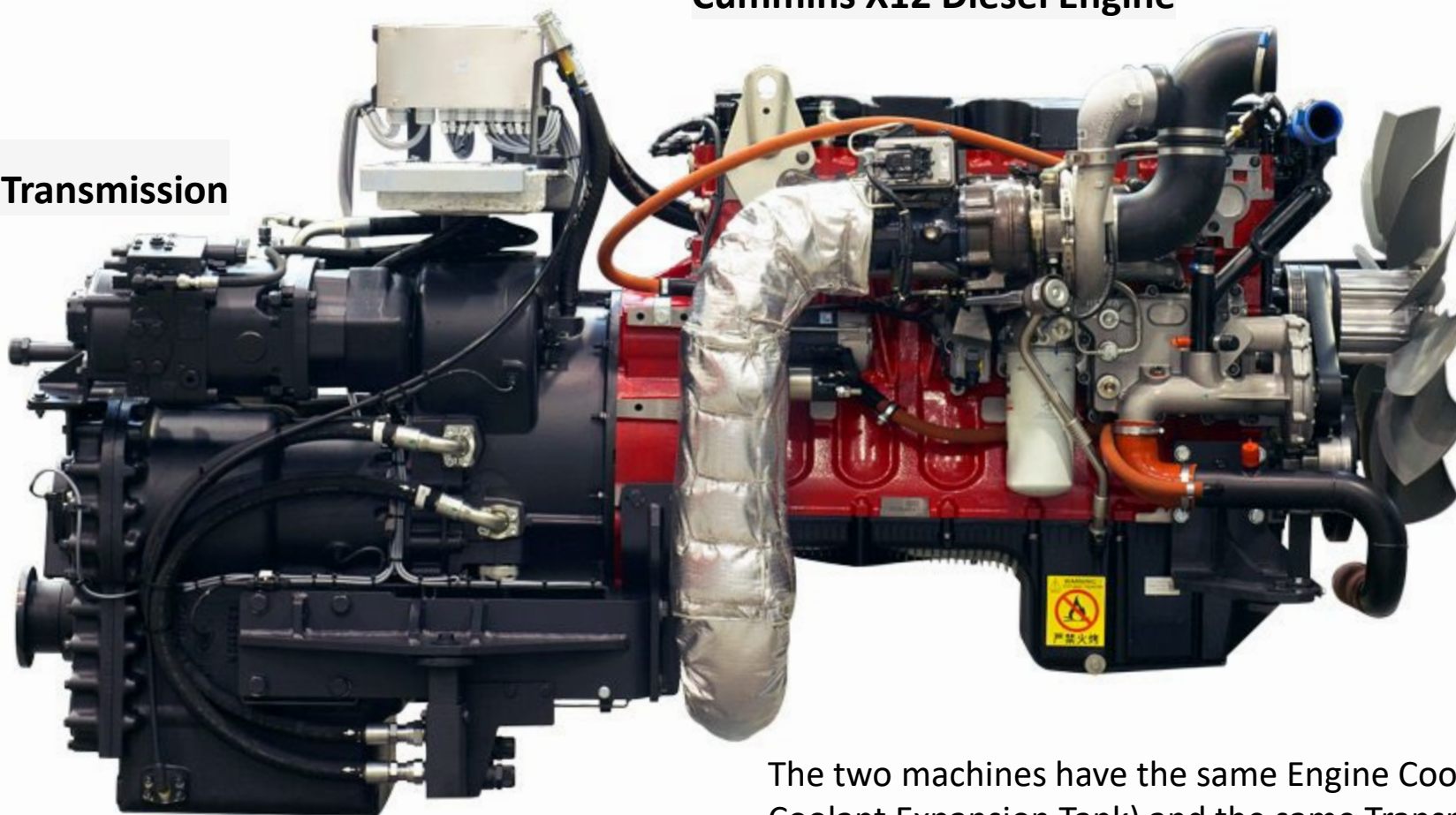
Confidential-Taylor Machine Works, Inc - Do Not Copy or Distribute

...Commonalities



Cummins X12 Diesel Engine

DANA TE30 Transmission



«Global»

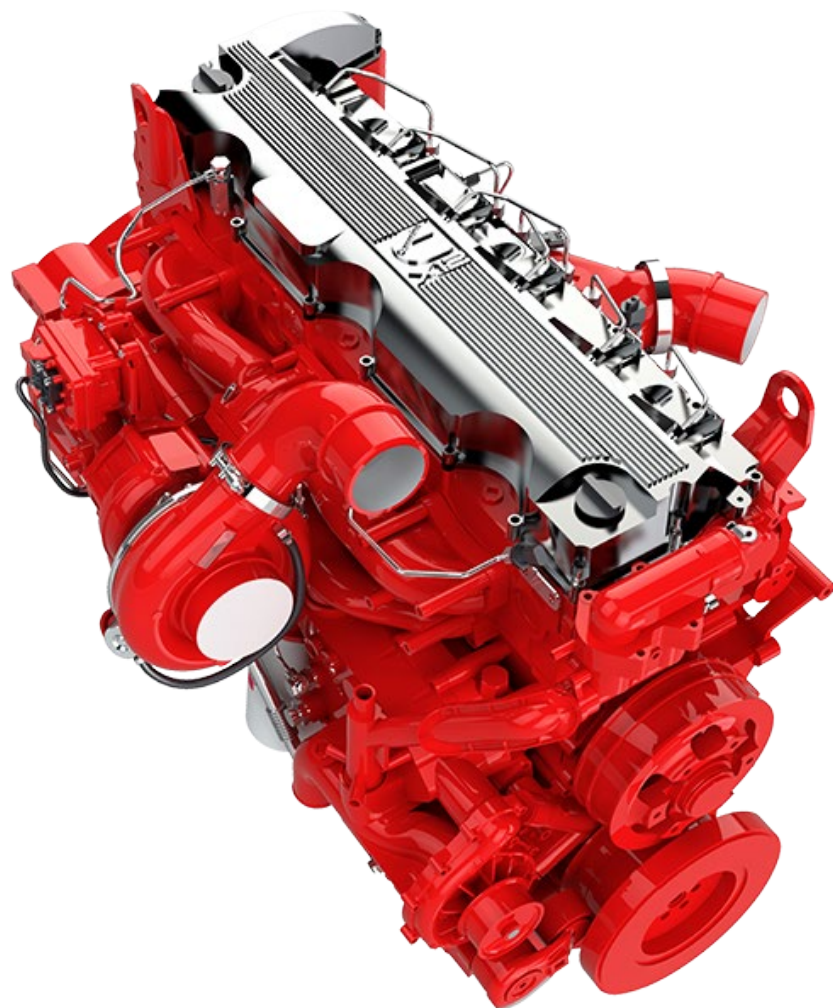
«Excellence»

The two machines have the same Engine Cooling System (Radiator, Coolant Expansion Tank) and the same Transmission Cooling System (Heat Exchanger, Oil Radiator)

Taylor Reach Stacker Product Training (GTX/XRS)

Confidential-Taylor Machine Works, Inc - Do Not Copy or Distribute

...Commonalities



«Global»

«Excellence»

Cummins X12 Diesel Engine

- Stage 5
- 12 Liter Displacement
RATED POWER : 335 hp
MAX POWER : 370 hp
- CAN-BUS CONTROLLED
- **MOST FUEL EFFICIENT ENGINE IN CLASS**

Taylor Reach Stacker Product Training (GTX/XRS)

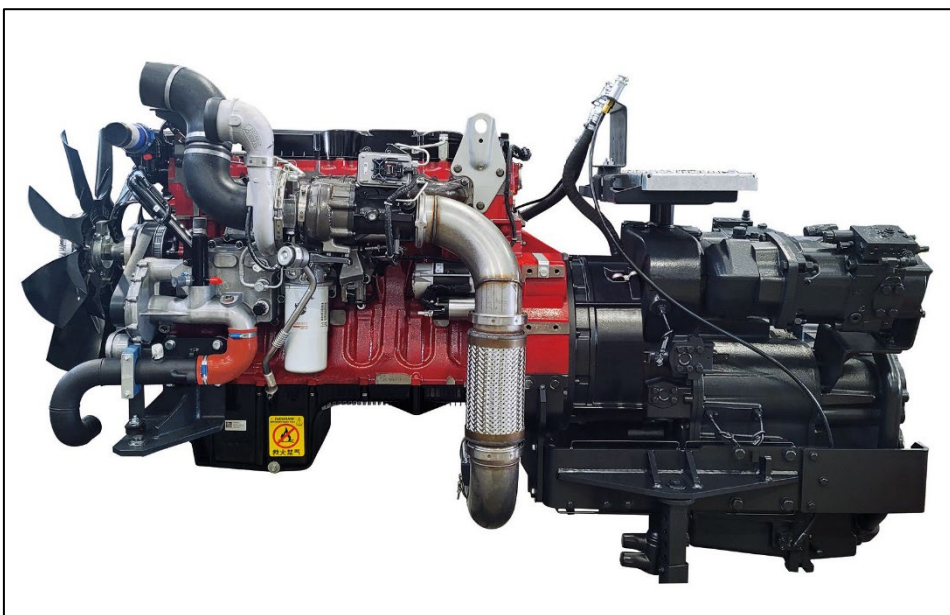
Confidential-Taylor Machine Works, Inc - Do Not Copy or Distribute



...Competitive Comparison

«Global»

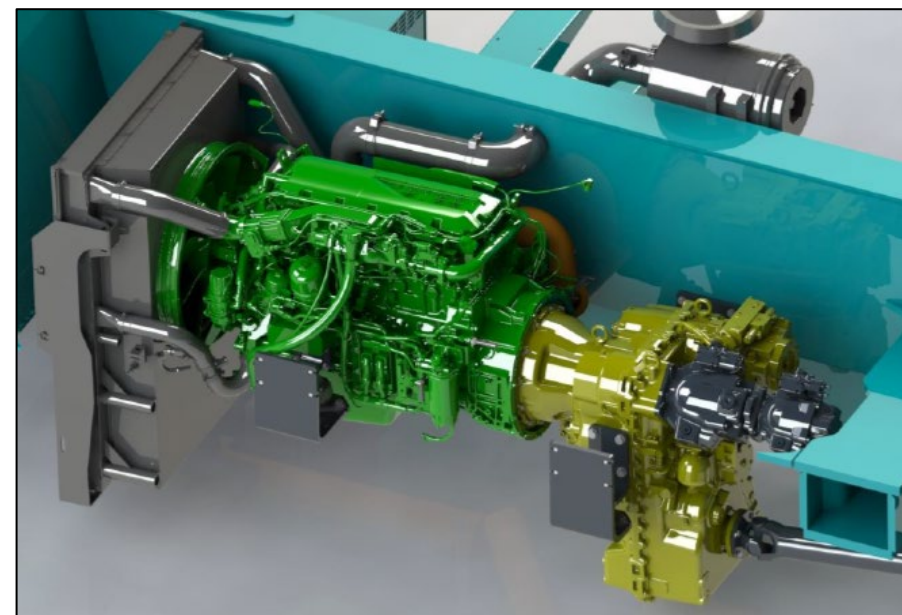
«Excellence»



CUMMINS
X12
Engine



DANA
TE30
Transmission



VOLVO
TAD 851 VE
Engine



DANA
HVT R2
Transmission

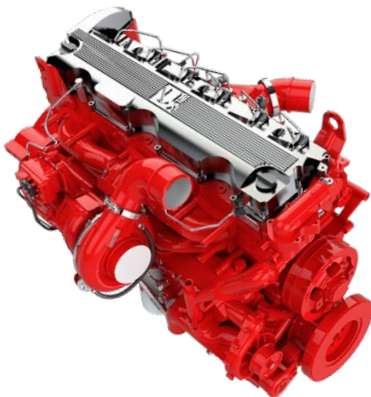
Taylor Reach Stacker Product Training (GTX/XRS)

Confidential-Taylor Machine Works, Inc - Do Not Copy or Distribute



«Global»

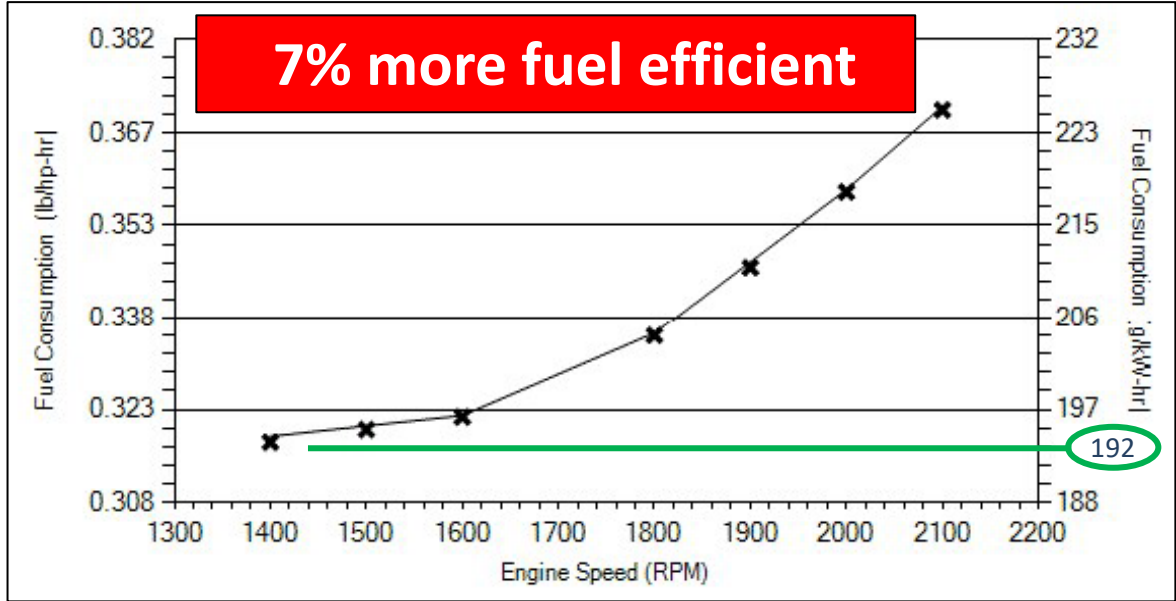
«Excellence»



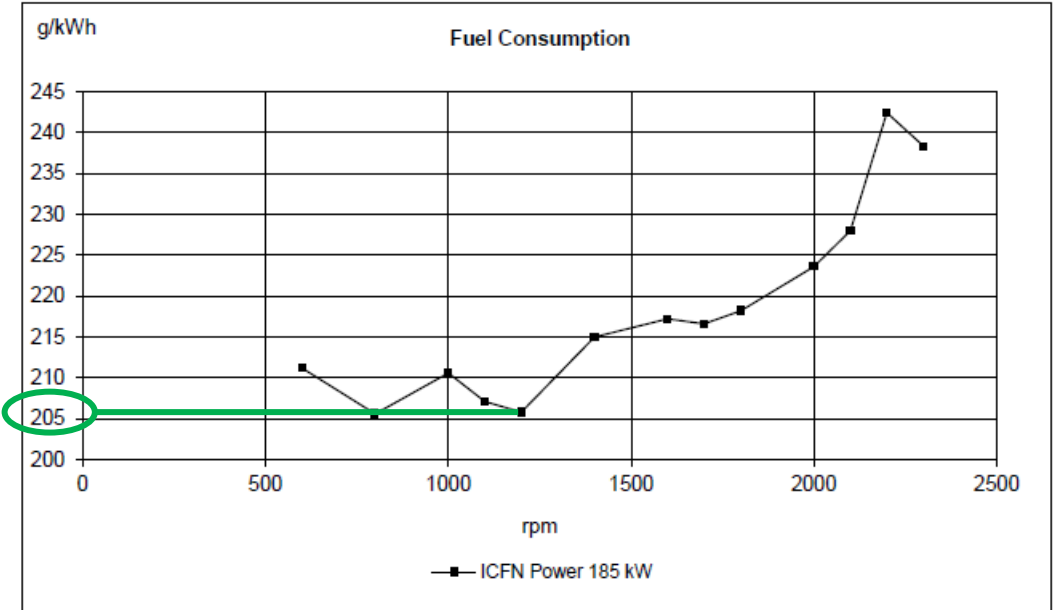
...Competitive Comparison



Cummins X12 Diesel Engine



Volvo TAD 883 VE



Taylor Reach Stacker Product Training (GTX/XRS)

Confidential-Taylor Machine Works, Inc - Do Not Copy or Distribute



«Global»

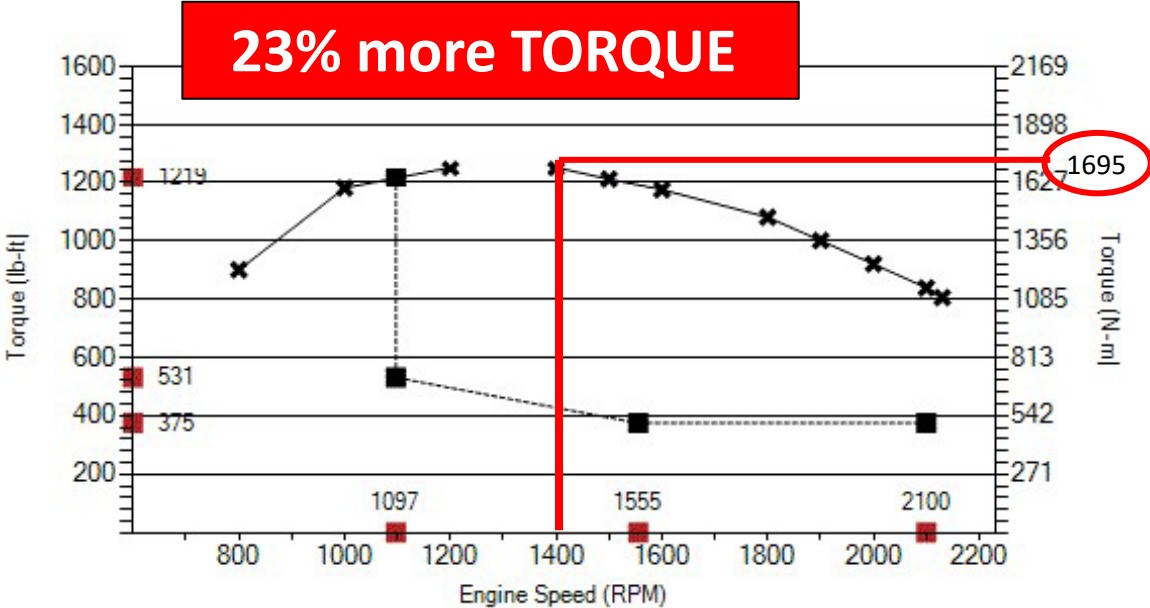
«Excellence»



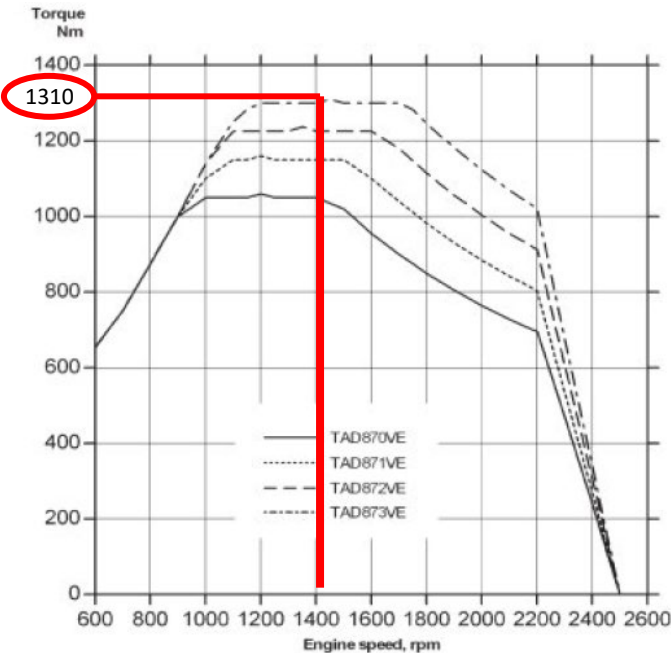
...Competitive Comparison



Cummins X12 Diesel Engine



Volvo TAD 883 VE



Taylor Reach Stacker Product Training (GTX/XRS)

Confidential-Taylor Machine Works, Inc - Do Not Copy or Distribute



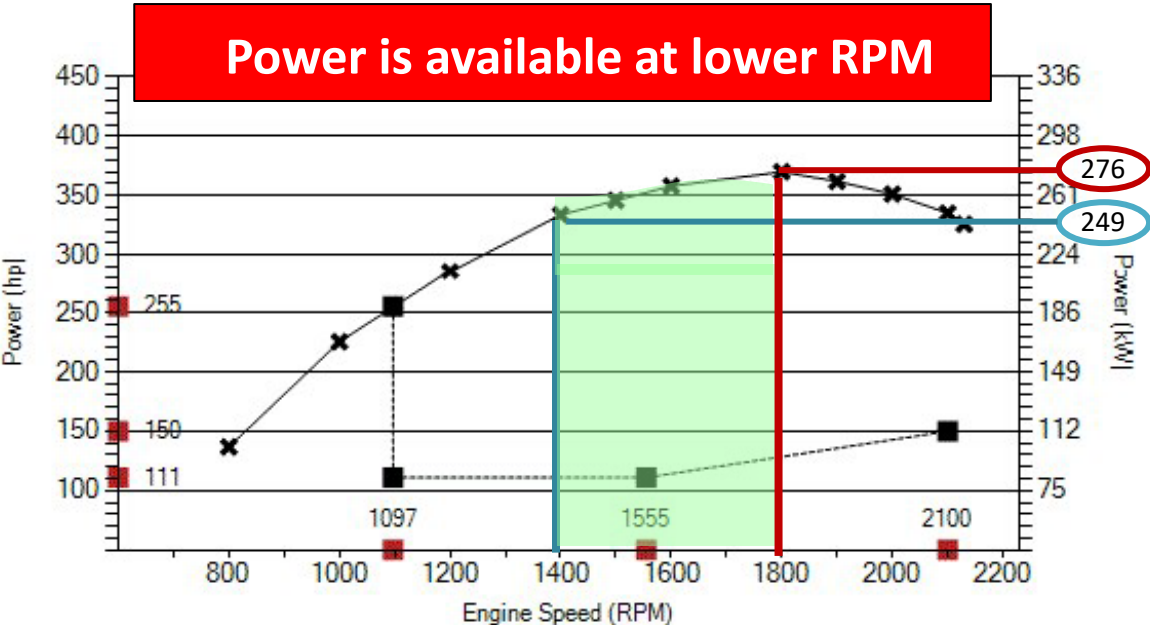
«Global»

«Excellence»

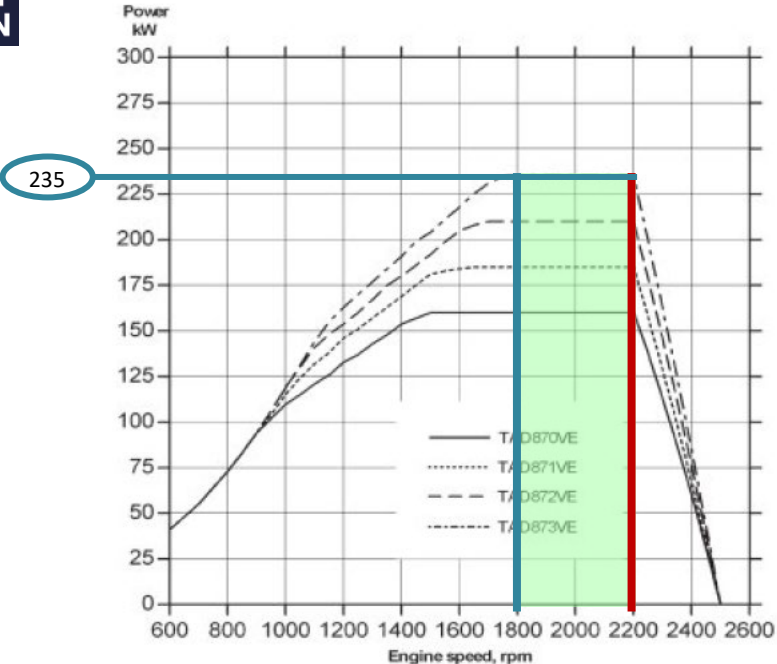


...Competitive Comparison

Cummins X12 Diesel Engine



Volvo TAD 883 VE



Taylor Reach Stacker Product Training (GTX/XRS)

Confidential-Taylor Machine Works, Inc - Do Not Copy or Distribute



«Global»

«Excellence»

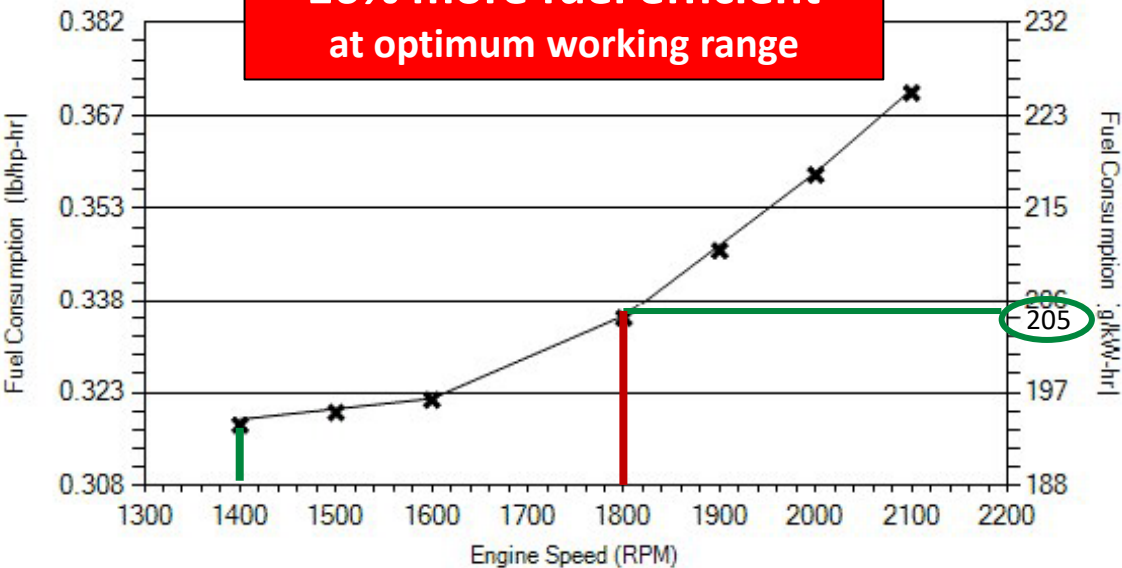


...Competitive Comparison

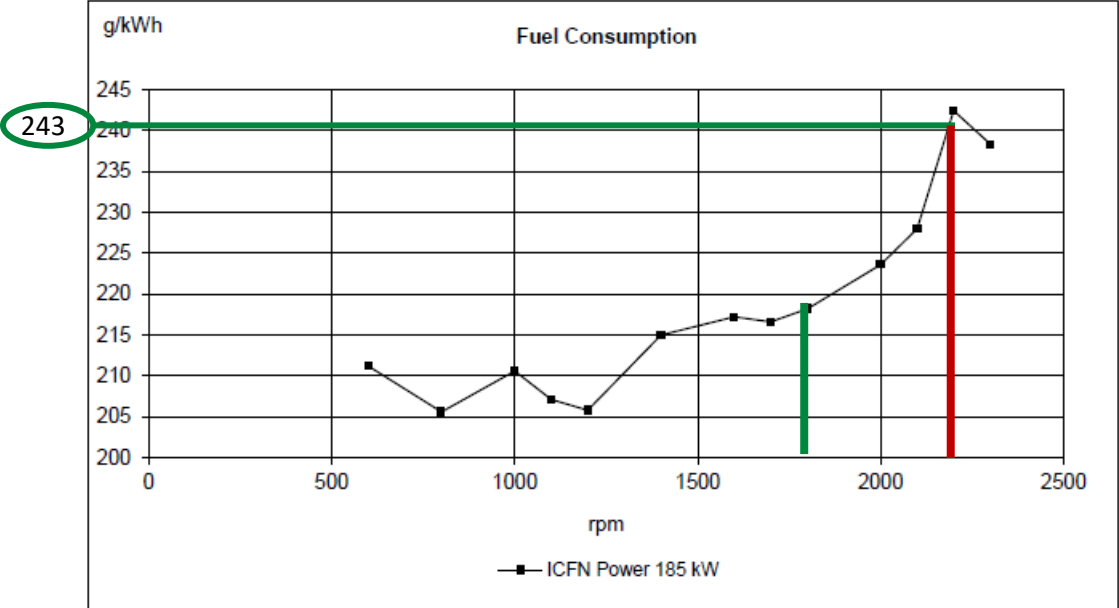


Cummins X12 Diesel Engine

16% more fuel efficient
at optimum working range

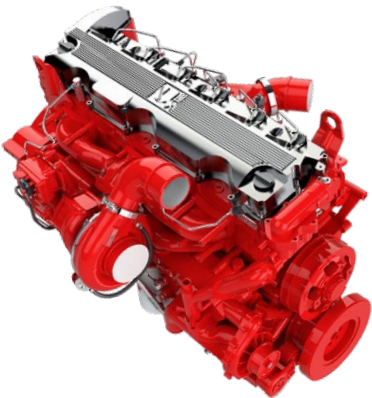


Volvo TAD 883 VE



Taylor Reach Stacker Product Training (GTX/XRS)

Confidential-Taylor Machine Works, Inc - Do Not Copy or Distribute



«Global»

«Excellence»



CUMMINS
X12 Engine

...Competitive Comparison



VOLVO TAD 853/873
VE Engine



335 Hp
370 Hp
1249 ft/lbs
Better Fuel
Consumption

11.700 cc	DISPLACEMENT	7.900 cc
250 kW	RATED POWER	235 kW
276 kW	MAX POWER	235 kW
1.695 Nm	MAX TORQUE	1310 Nm
192 g/kWh	SPECIFIC FUEL CONSUMPTION (at max Torque)	205 g/kWh
205 g/kWh	SPECIFIC FUEL CONSUMPTION (at max Power)	243 g/kWh
21,36 kW/l	DISPLACEMENT/POWER RATIO	29,74 kW/l

315 Hp
315 Hp
966 ft/lbs

Taylor Reach Stacker Product Training (GTX/XRS)

Confidential-Taylor Machine Works, Inc - Do Not Copy or Distribute

...Commonalities



Best-in-class efficiency designed specifically for heavy-duty material handling applications, including Reach Stackers and heavy Lift Trucks (forklifts)

Specification:

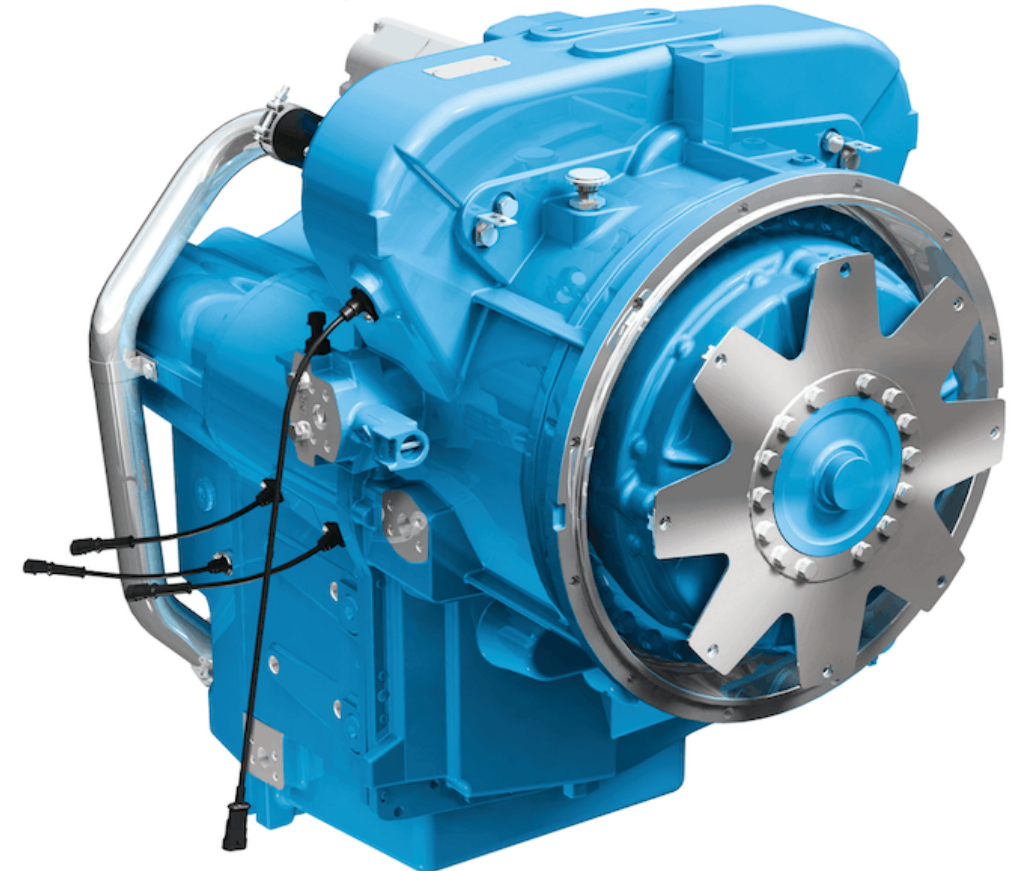
- 300 kW Max Power Input Capacity
- CAN-BUS CONTROLLED
- AUTOMATIC GEAR-SHIFT
- 5-FWD/3-REV gears

Transmission

Dana Spicer TE30

«Global»

«Excellence»



Taylor Reach Stacker Product Training (GTX/XRS)

Confidential-Taylor Machine Works, Inc - Do Not Copy or Distribute

...Commonalities

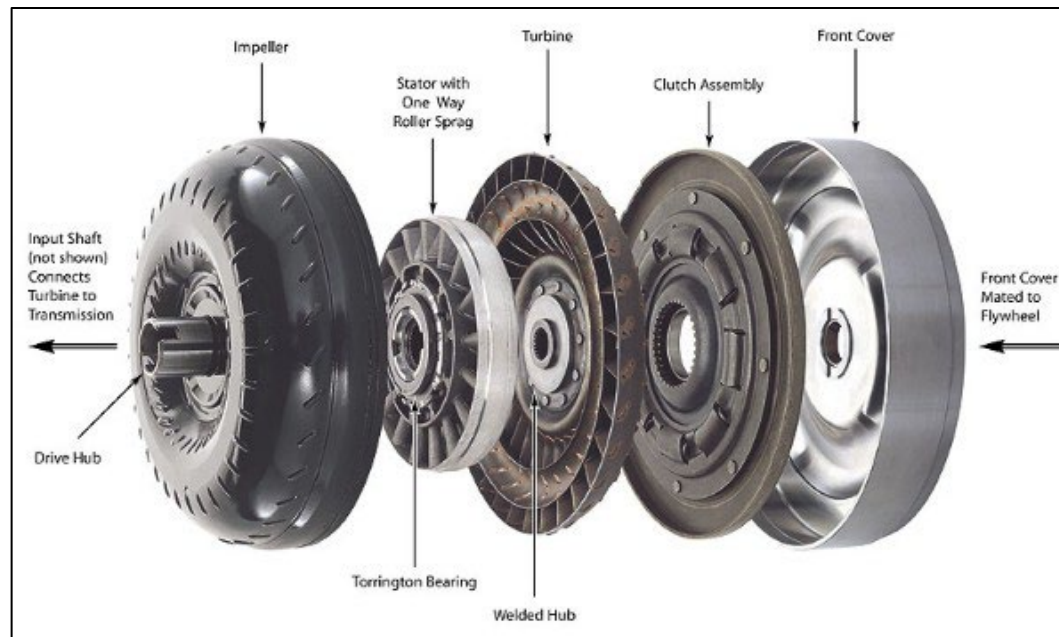
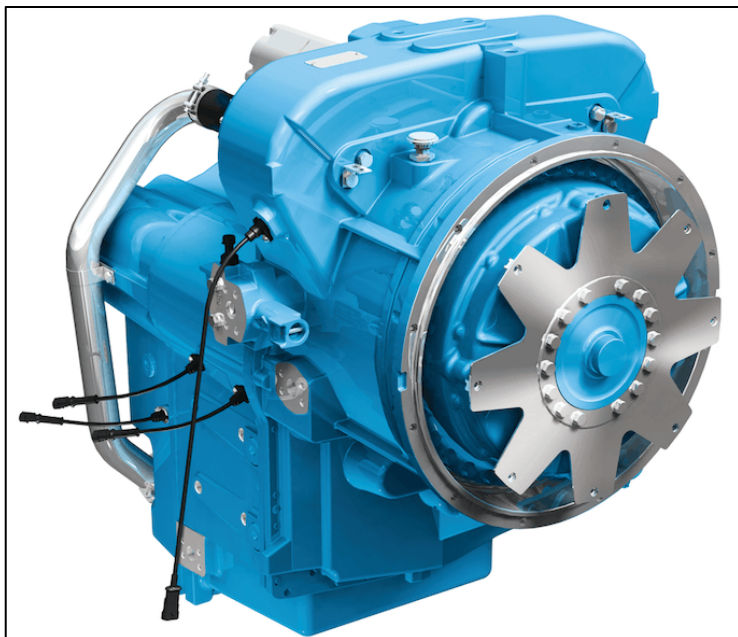


Transmission Lock-Up

Dana Spicer TE30
7% to 10% MORE EFFICIENT

«Global»

«Excellence»



"... Lockup can help OEMs improve overall drivetrain performance and **optimize the efficiency of their product lines by 7-10 percent on average**, depending on the duty cycle."

Taylor Reach Stacker Product Training (GTX/XRS)

Confidential-Taylor Machine Works, Inc - Do Not Copy or Distribute

...Commonalities



Transmission Lock-Up

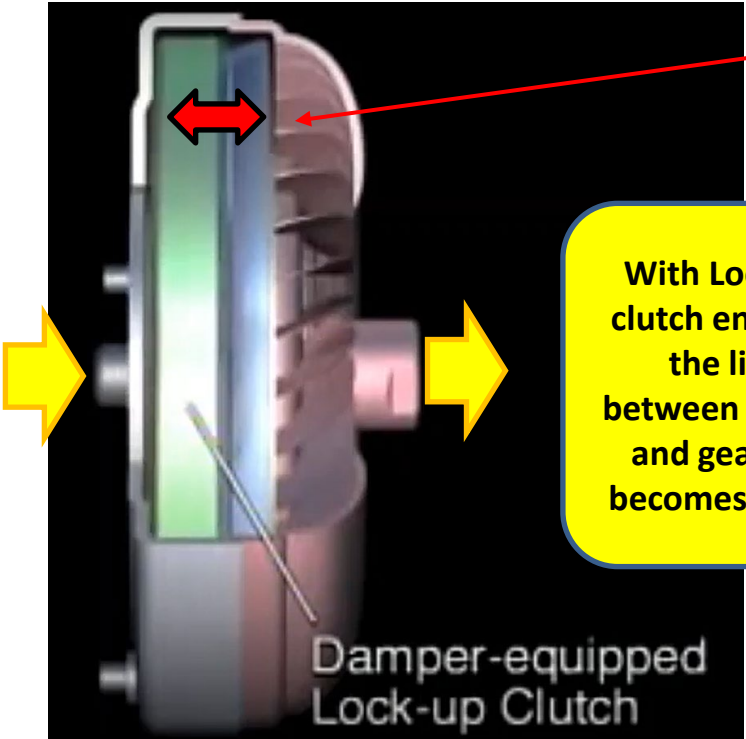
Dana Spicer TE30

«Global»

«Excellence»

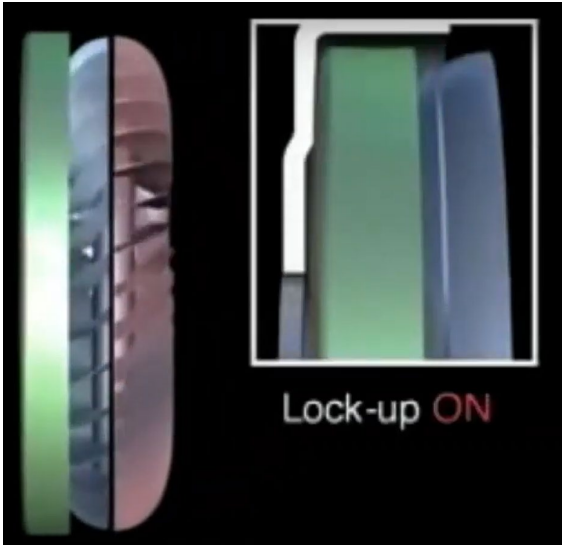
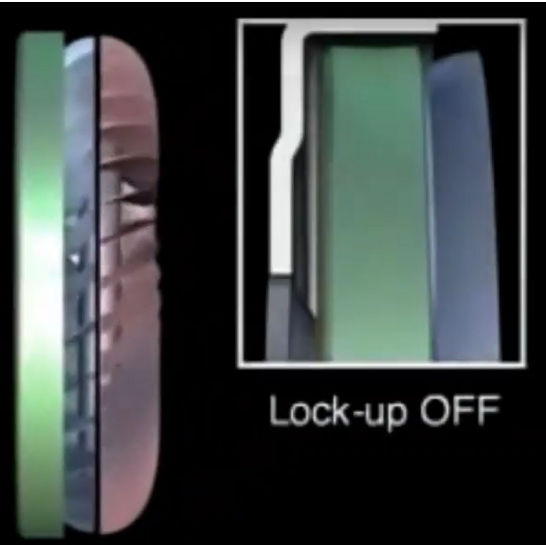
Ratios (Standard)					
Short Drop	1 st Gear	2 nd Gear	3 rd Gear	4 th Gear	5 th Gear
5 FWD	4.776	2.495	1.643	1.090	0.718
3 REV	4.776	2.495	1.090	—	—

Very energy efficient gear ratio at high drive speed



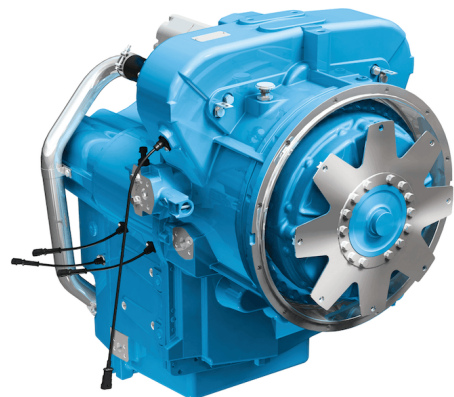
With Lock-up clutch engaged the link between engine and gearbox becomes direct

A change in oil pressure pushes the Lock-up Clutch against the Front Cover of the Turbine, that is mated to the Engine fly-wheel. This directly connects the engine and the transmission, and eliminates the power loss generated by the torque converter.



Taylor Reach Stacker Product Training (GTX/XRS)

Confidential-Taylor Machine Works, Inc - Do Not Copy or Distribute



«Global»

«Excellence»

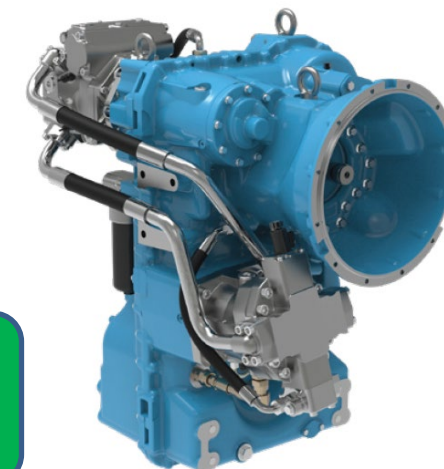


**DANA TE30
Transmission**

...Competitive Comparison



**DANA HVT R2
Transmission**



300 kW	INPUT POWER	235 kW
1,2 0	INPUT POWER/ENGINE POWER RATIO	1.00
2500	INPUT MAXIMUM RPM	2350
1,38*	INPUT RPM / ENGINE MAX RPM RATIO	1,02
Torque Converter with Lock-Up	ENGINE TORQUE TRANSFER	Hydrostatic Pump + Direct Clutch
5 FWD / 3 BWD	Nr. Of Gears	3 FWD / 3 BWD
0.78	Max Gear Reduction Ratio	Not specified

Taylor Reach Stacker Product Training (GTX/XRS)

Confidential-Taylor Machine Works, Inc - Do Not Copy or Distribute

...Commonalities

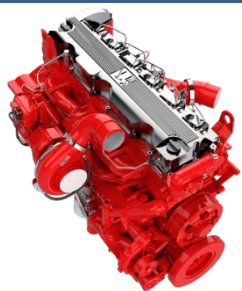


«Global»

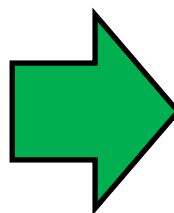
«Excellence»



**ENERGY
SAVING**



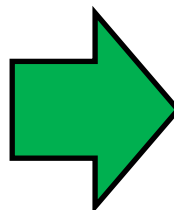
MOST EFFICIENT
ENGINE IN CLASS
(and in specific
application)



7% to 16%
MORE EFFICIENT
than
VOLVO TAD 883 VE



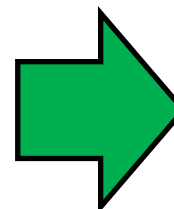
BEST IN CLASS
FOR EFFICIENCY
TRANSMISSION
(designed for the
application)



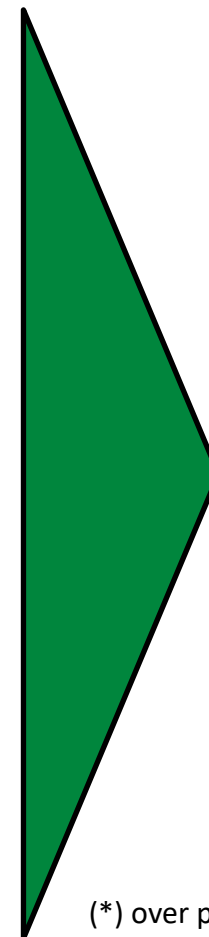
7% to 10%
MORE EFFICIENT
WHEN EQUIPPED
WITH LOCKUP



COMPUTER
CONTROLLED
HYDRAULICS
+ OTHERS



5% to 7%
IMPROVEMENT IN
OVERALL EFFICIENCY



**20% to 25%
IMPROVEMENT
IN OVERALL FUEL
EFFICIENCY (*)
WITHOUT ANY
POWER
(PRODUCTIVITY)
LOSS**

(*) over previous generation comparable equipment.

Taylor Reach Stacker Product Training (GTX/XRS)

Confidential-Taylor Machine Works, Inc - Do Not Copy or Distribute

...Commonalities



KESSLER+CO

Kessler is the world's leading manufacturer of planetary drive axles

DRIVE AXLE

Kessler D102

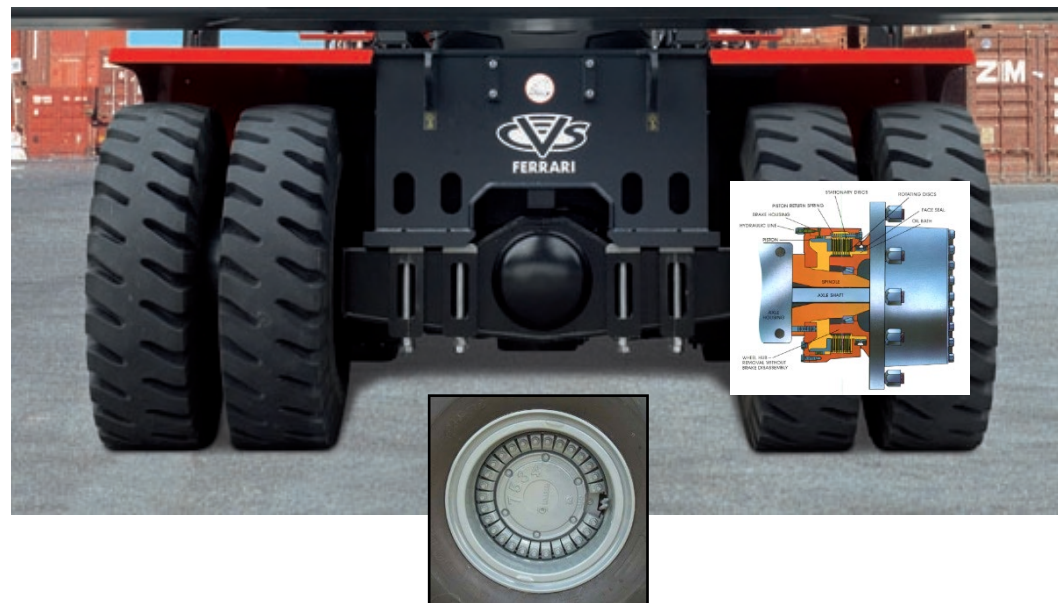
«Global»

«Excellence»



Specification:

- WET DISC BRAKES
- DOUBLE DIFFERENTIAL GEAR REDUCTION
- SINGLE HUB REDUCTION
- EXTRA HEAVY DUTY RIMS



Taylor Reach Stacker Product Training (GTX/XRS)

Confidential-Taylor Machine Works, Inc - Do Not Copy or Distribute

...Commonalities



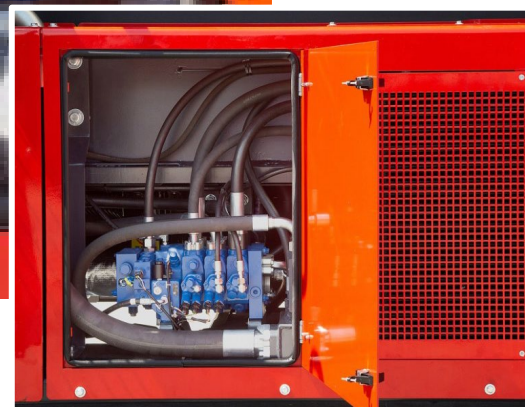
rexroth

A Bosch Company

**REXROTH Hydraulic Main
Distribution Valve**

«Global»

«Excellence»



Taylor Reach Stacker Product Training (GTX/XRS)

Confidential-Taylor Machine Works, Inc - Do Not Copy or Distribute

...Commonalities

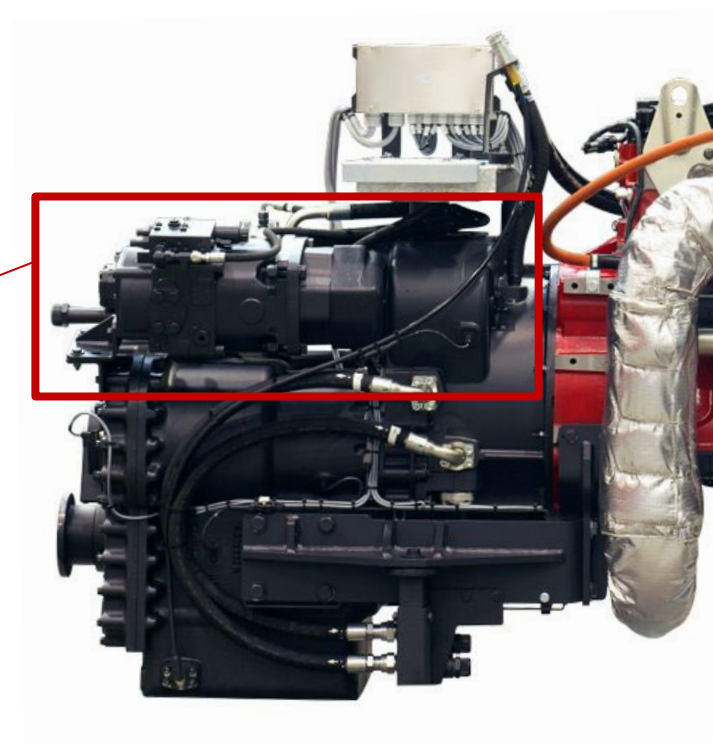


rexroth
A Bosch Company

«Global»

«Excellence»

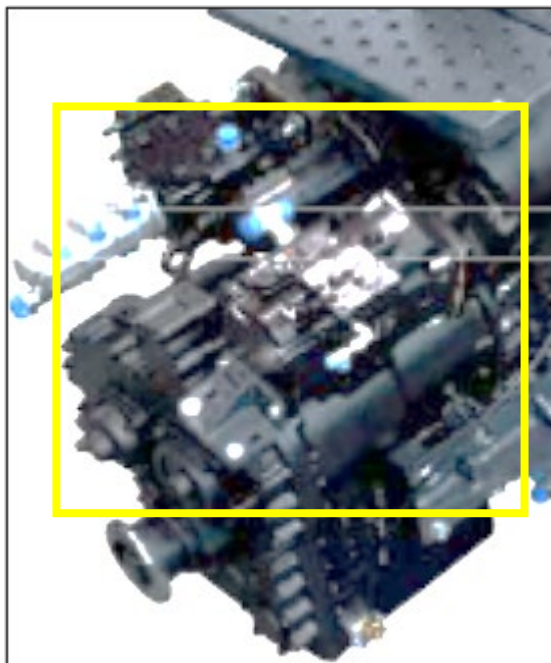
REXROTH Main Hydraulic Pumps



Taylor Reach Stacker Product Training (GTX/XRS)

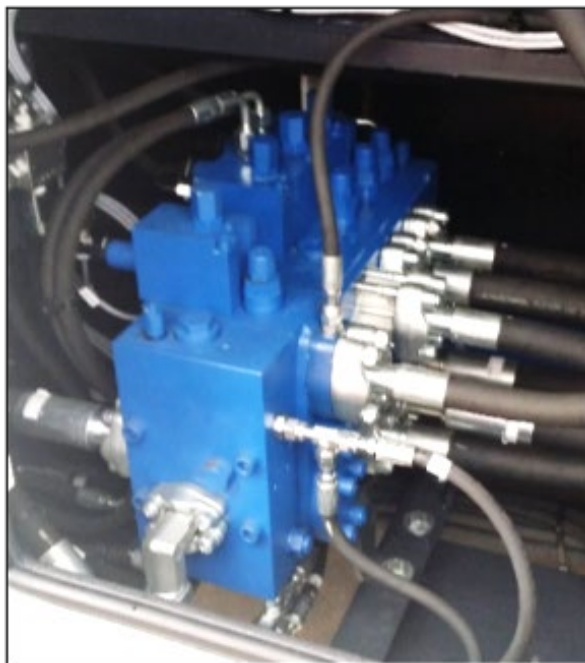
Confidential-Taylor Machine Works, Inc - Do Not Copy or Distribute

...Commonalities



VARIABLE DISPLACEMENT
LOAD SENSING PUMPS

ELECTRIC ACTUATED
ELECTRONIC CONTROLLED



LOAD SENSING
PROPORTIONAL
DISTRIBUTION VALVE

ELECTRIC ACTUATED
ELECTRONIC CONTROLLED

«Global»

«Excellence»

HYDRAULIC SYSTEM

The class leading **REXROTH** Variable Displacement Pumps are designed for the life of the machine. The “Load Sensing” Proportional Distributor Valve **is managed by the on-board computer to grant maximum fuel efficiency**



«SIXTH SENSE»

Taylor Reach Stacker Product Training (GTX/XRS)

Confidential-Taylor Machine Works, Inc - Do Not Copy or Distribute

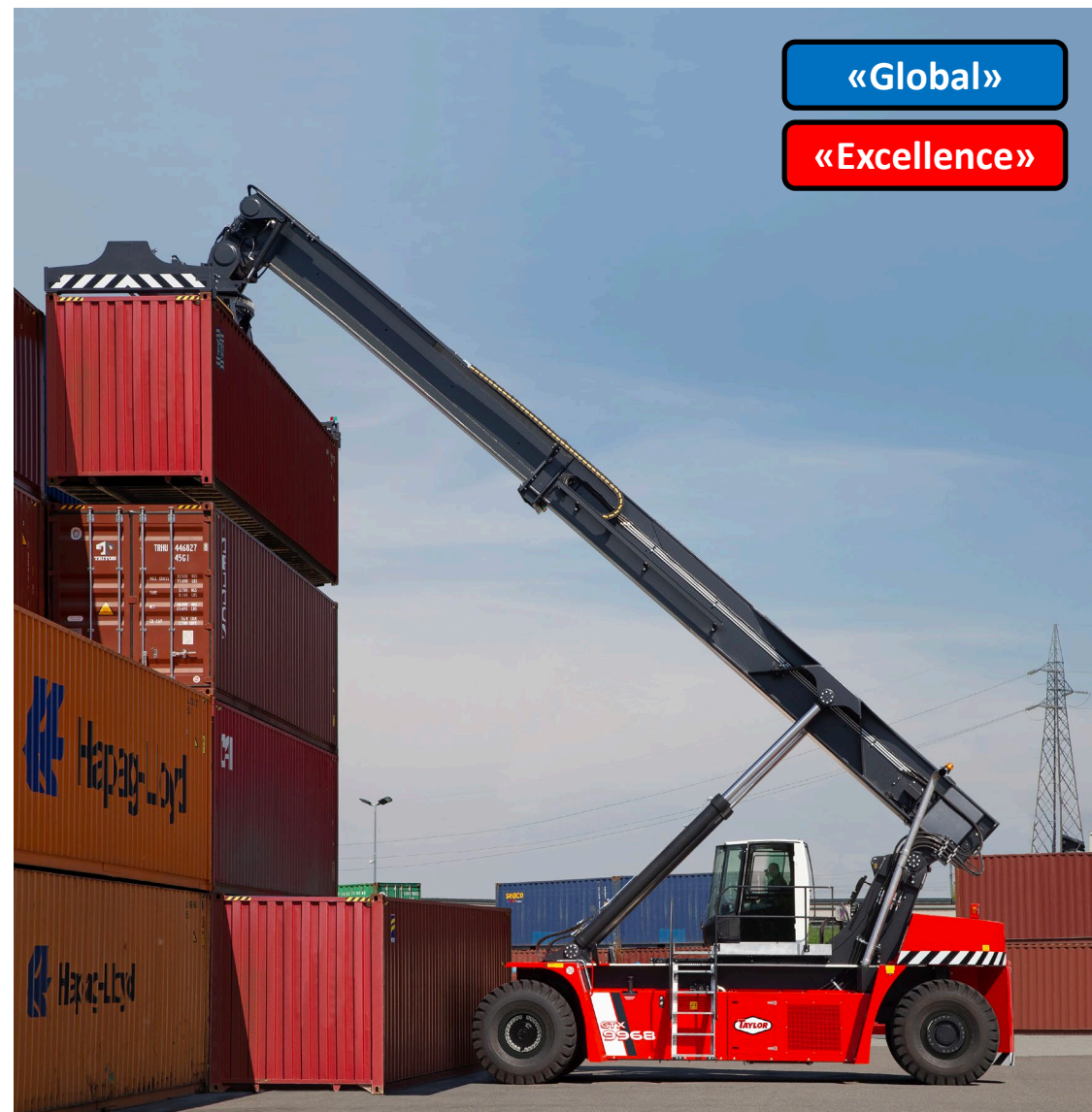
...Commonalities



Energy Savings

When **LIFTING** a Load, Sixth Sense will take over the throttle and deliver just the required energy to perform the lift at the required speed, without any wastage of fuel

When **LOWERING** a load, Sixth Sense will take over the throttle and prevent any unnecessary engine revving as the load is lowered by gravity at high speeds without any need of engine assistance.



Taylor Reach Stacker Product Training (GTX/XRS)

Confidential-Taylor Machine Works, Inc - Do Not Copy or Distribute

...Commonalities



Energy Savings



«Global»

«Excellence»

Standard Energy Saving System Package	Drive Mode	Energy Savings Action
Sixth Sense Hydraulics	1 & 2	The on-board computer manages power usage so that only right amount of energy is used to lift a load at the required speed.
Stacking Height Pre-Selector	1 & 2	The truck will automatically lift at the perfect set lift height avoiding any unnecessary fuel usage.
Auto Optimum Drive Position	1 & 2	The truck will automatically find the ideal position of the boom for driving, based on the actual load carried.
Fuel Efficient Boom Retraction Cylinder Valve	1 & 2	Valve increases fuel efficiency whenever boom is being retracted.
Throttle Off with Lowering Boom	1 & 2	Throttle is automatically cut off when the truck is standing and the boom is lowered, not wasting fuel.
Idle Reduced to 650 rpm	1 & 2	When engine idling for long periods of time, the idling regime lowers automatically to 650rpm, saving fuel.
Thermostatic Fluid Cooling Fans	1 & 2	All of the cooling systems are thermostatically controlled, not wasting energy on unnecessary cooling.
A/C Off with Cab Doors Open Hydraulic Driven Compressor	1 & 2	Whenever the doors are open, the A/C shuts off.
Rpm Limitation to 1800	2	Whenever handling loaded containers at a medium stack height, rpms are limited to conserve fuel.

Note: This is valid for all GTX Reachstacker models.

Taylor Reach Stacker Product Training (GTX/XRS)

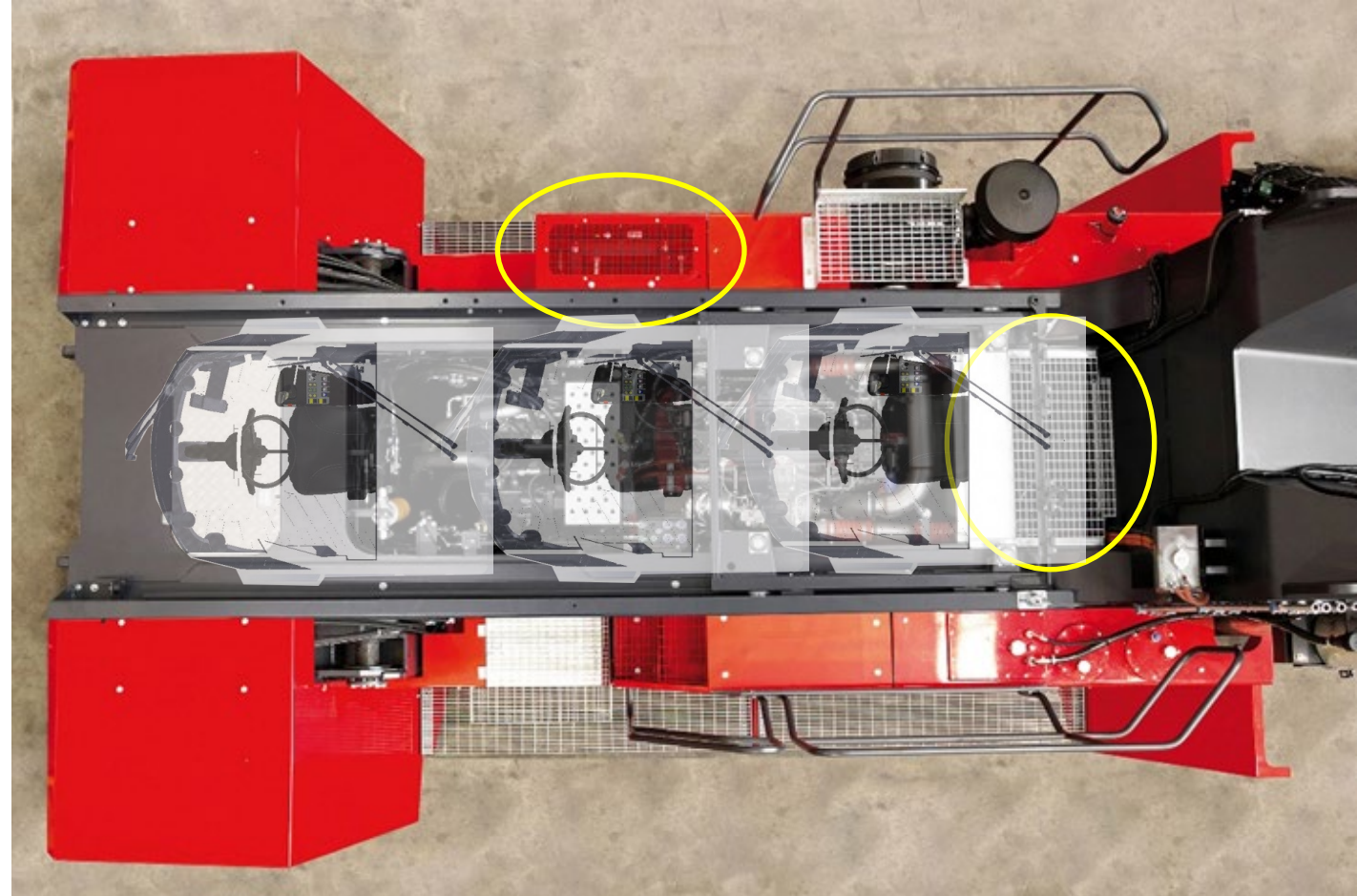
Confidential-Taylor Machine Works, Inc - Do Not Copy or Distribute

...Commonalities



Chassis Details

- Easy Access for maintenance
- Sliding cab moves give access to all drivetrain components
- Two separate coolers for:
 - Engine Water
 - Hydraulic Oil+ Transmission Oil, (Thermostatically controlled)



Taylor Reach Stacker Product Training (GTX/XRS)

Confidential-Taylor Machine Works, Inc - Do Not Copy or Distribute

...Commonalities



Hydraulic & Transmission Oil Cooling

Cooler is the same...the mounting orientation is different

Thermostat Controlled Cooling *The fan is controlled to provide cooling power based on the actual temperature of the oil. This optimizes hydraulic system efficiency and saves fuel by preventing unnecessary fluid cooling.*

«Excellence»



«Global»



Taylor Reach Stacker Product Training (GTX/XRS)

Confidential-Taylor Machine Works, Inc - Do Not Copy or Distribute

...Commonalities



Operator Cabin (Same on all Reachstackers)

«Excellence»



«Global»



Taylor Reach Stacker Product Training (GTX/XRS)

Confidential-Taylor Machine Works, Inc - Do Not Copy or Distribute

...Commonalities



«Excellence»

«Global»

Operator CABIN

- Recently redesigned cabin improving overall driver environment and comfort
- Front Pillars of the cab are recessed for increased driver visibility
- Operator display is in driver's line of sight
- FOPS compliant roof top glass
- Pantograph type top glass wiper



Taylor Reach Stacker Product Training (GTX/XRS)

Confidential-Taylor Machine Works, Inc - Do Not Copy or Distribute

...Commonalities



«Excellence»

«Global»

Operator CABIN

- Twin Doors with SLIDING windows
- Foldable TRAINER seat on left side
- The updated console and pedals position has increased lateral room for the driver.
- The improvements have resulted in an increased range of motion for the operator thus reducing driver fatigue.



Taylor Reach Stacker Product Training (GTX/XRS)

Confidential-Taylor Machine Works, Inc - Do Not Copy or Distribute

...Commonalities



«Excellence»

«Global»

Operator Console

- 3-Point adjustable air ride seat with heater and adjustable armrest
- Fully adjustable Right armrest with integrated controls that are **independent** from the seat
- Customizable control layout
- Console can be flipped up in allowing ingress/egress through right side door
- Control Console can be Adjusted in
 - Height
 - Length Axis
 - Width Axis
 - Incline
 - Horizontal Angle



Taylor Reach Stacker Product Training (GTX/XRS)

Confidential-Taylor Machine Works, Inc - Do Not Copy or Distribute

...Commonalities



«Excellence»

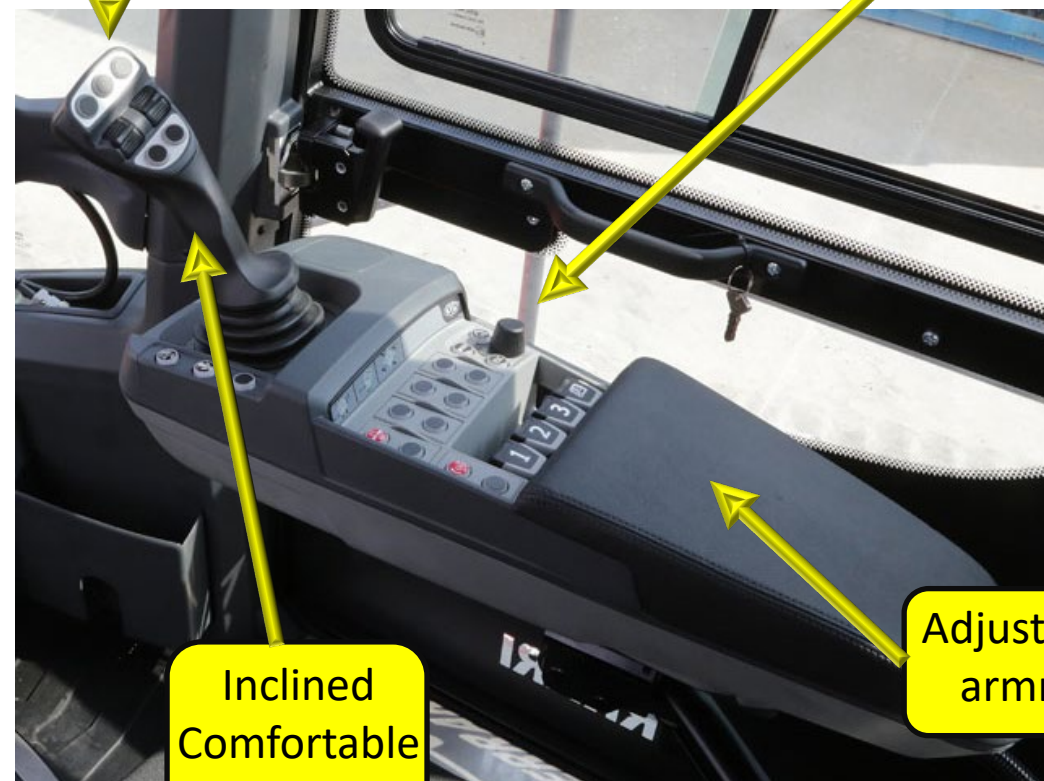
«Global»

Operator Console

- The control lay-out optimizes the comfort and efficiency of machine. F/N/R (Forward, Neutral, Reverse) actuation is integral to the joystick .
- The control lay-out is customizable (an be programmed for preference).
- The contactless joystick is set at an inclined position that fits the natural position of a rested hand, thus greatly improving driver's comfort and reducing workload strain.
- The angle and position of the consolle armrest is adjustable across mutiple plains to fit operator preference.

Gear Shift Control on Joystick

Display Menu
Navigation Control



Inclined
Comfortable
Stick

Adjustable
armrest

Taylor Reach Stacker Product Training (GTX/XRS)

Confidential-Taylor Machine Works, Inc - Do Not Copy or Distribute

...Commonalities



«Excellence»

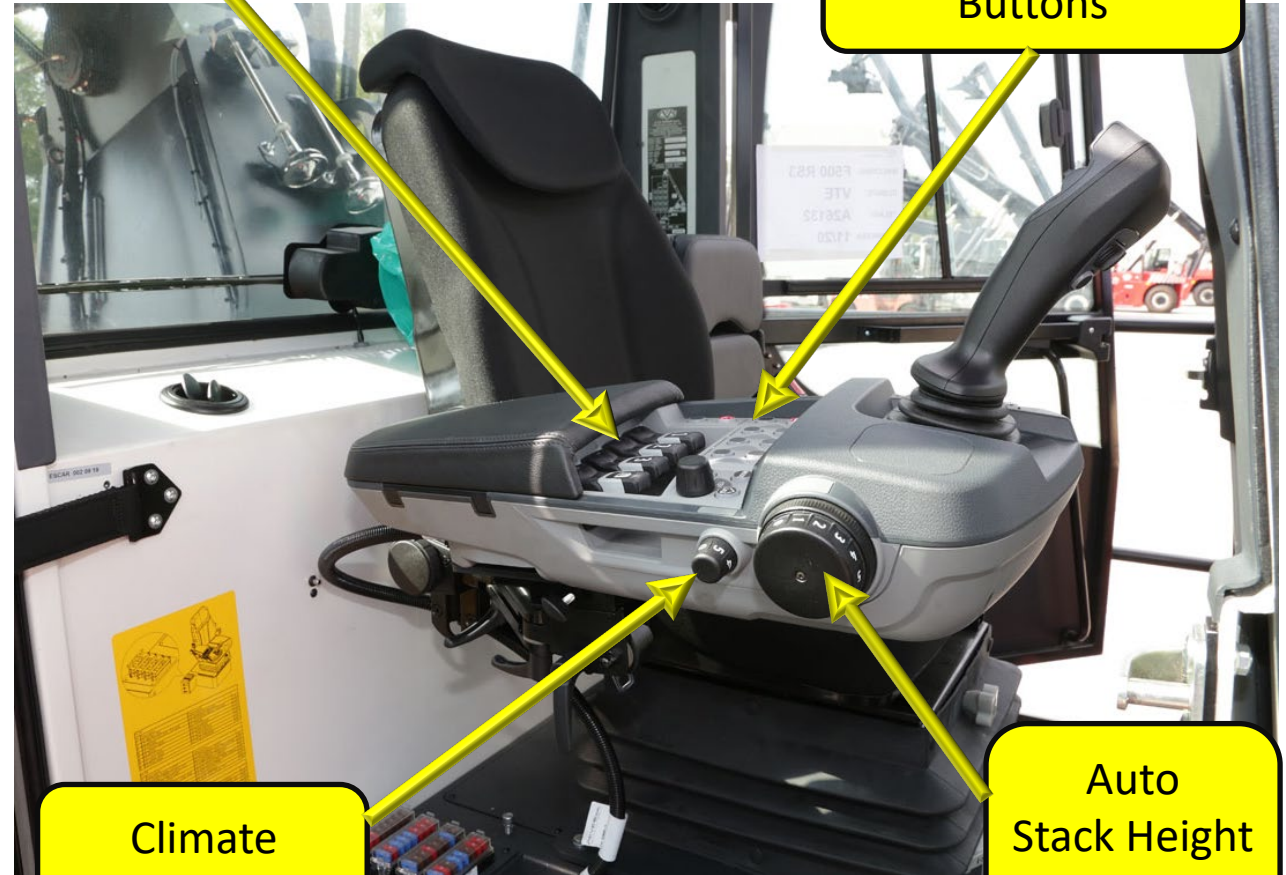
«Global»

Operator Console

- The control lay-out optimizes the comfort and efficiency of machine. F/N/R (Forward, Neutral, Reverse) actuation is integral to the joystick.
- The control lay-out is customizable (an be programmed for preference).
- The contactless joystick is set at an inclined position that fits the natural position of a rested hand, thus greatly improving driver's comfort and reducing workload strain.
- The angle and position of the consolle armrest is adjustable across mutiple plains to fit operator preference.

Functon control Levers

Function Control Buttons



Climate Control System

Auto Stack Height Preselector

Taylor Reach Stacker Product Training (GTX/XRS)

Confidential-Taylor Machine Works, Inc - Do Not Copy or Distribute

...Commonalities



«Excellence»

«Global»

Operator Joystick

- ALL TRUCK CONTROLS IN ON HAND:
Ergonomic handle, inclined to have motion driven by the forearm instead of the wrist. Controllable with two fingers when active.
- SAFE: Non trigger type (dead man) handle. Controls illuminate with Blue back-light when active
- CUSTOMIZABLE: The configuration of the joystick commands is completely customizable
- Features Forward/Neutral/Reverse gear control. Spreader extension-retraction. Horn control.
- Intuitive Up/Down - Lift / Lower
- In/Out - Tilt Backwards / Tilt Forward
- Proportional Side-Shift Switch, Rotation Switch, and Pile- Slope Switch (back)



Taylor Reach Stacker Product Training (GTX/XRS)

Confidential-Taylor Machine Works, Inc - Do Not Copy or Distribute

...Commonalities



«Excellence»

«Global»

Operator Joystick

COMFORTABLE: Ergonomic handle , inclined with actuation driven by the forearm instead of the wrist



Taylor Reach Stacker Product Training (GTX/XRS)

Confidential-Taylor Machine Works, Inc - Do Not Copy or Distribute

...Commonalities



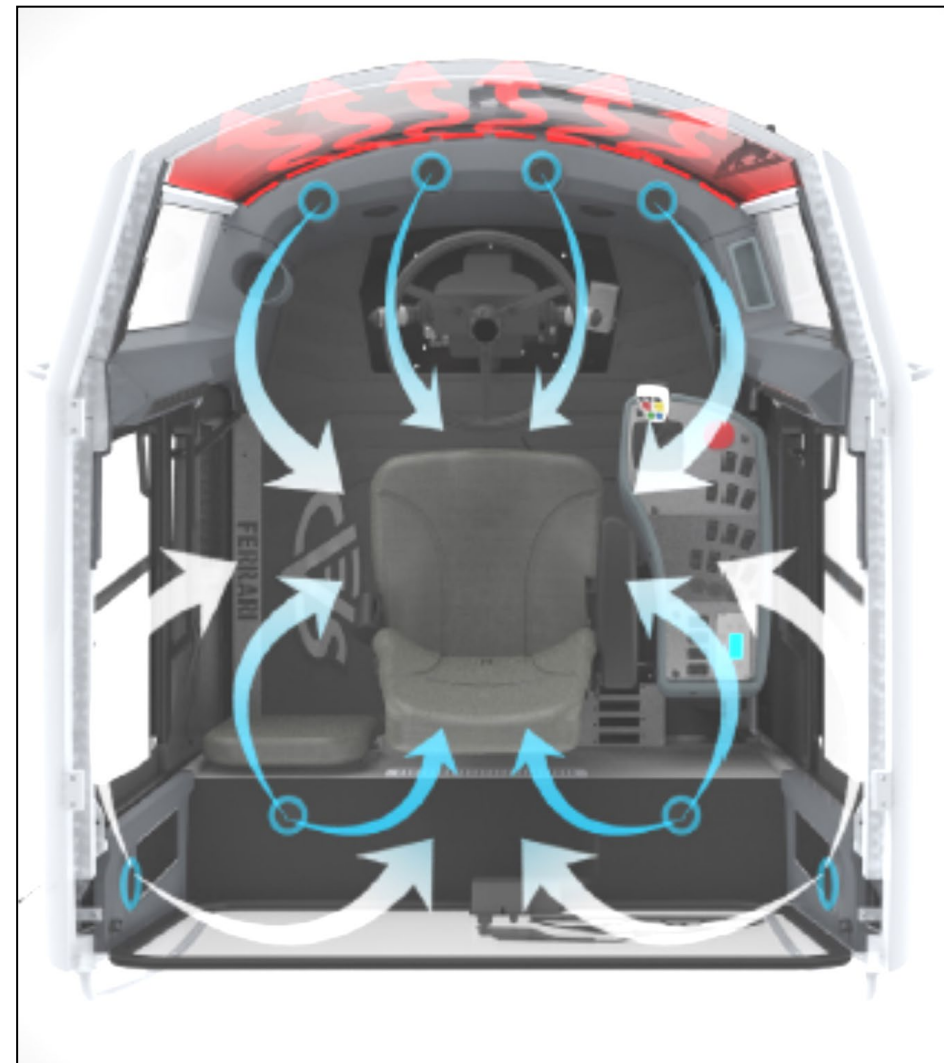
«Excellence»

«Global»



Cabin Environmental Details

- 40,000 BTU Heater
- Powerful Air conditioner
- Eight evenly distributed output vents
- Slight air pressurization keeps dust out of cab
- Hydraulic Powered Aircon System Compressor



Taylor Reach Stacker Product Training (GTX/XRS)

Confidential-Taylor Machine Works, Inc - Do Not Copy or Distribute

...Commonalities



«Excellence»

«Global»

On Board Computer

- Powerful on-board computer provides driver with operational aids and safety awareness information
- The system allows a detailed user-friendly diagnostic of the machine's main systems and records functional and operational events.
- 7" touch screen color display.
- Interaction with the system is made through the function buttons (located on the sides) and the navigation buttons (located on the bottom)



Taylor Reach Stacker Product Training (GTX/XRS)

Confidential-Taylor Machine Works, Inc - Do Not Copy or Distribute

...Commonalities



«Excellence»

«Global»

On Board Computer

DISPLAY



Taylor Reach Stacker Product Training (GTX/XRS)

Confidential-Taylor Machine Works, Inc - Do Not Copy or Distribute

...Commonalities



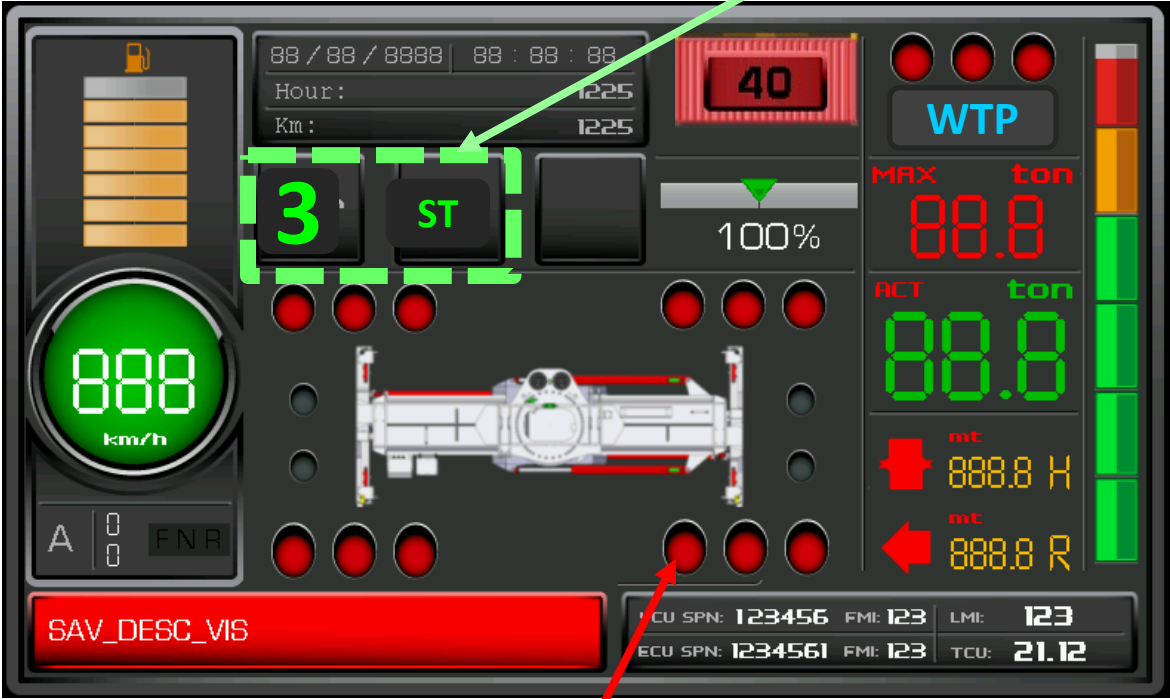
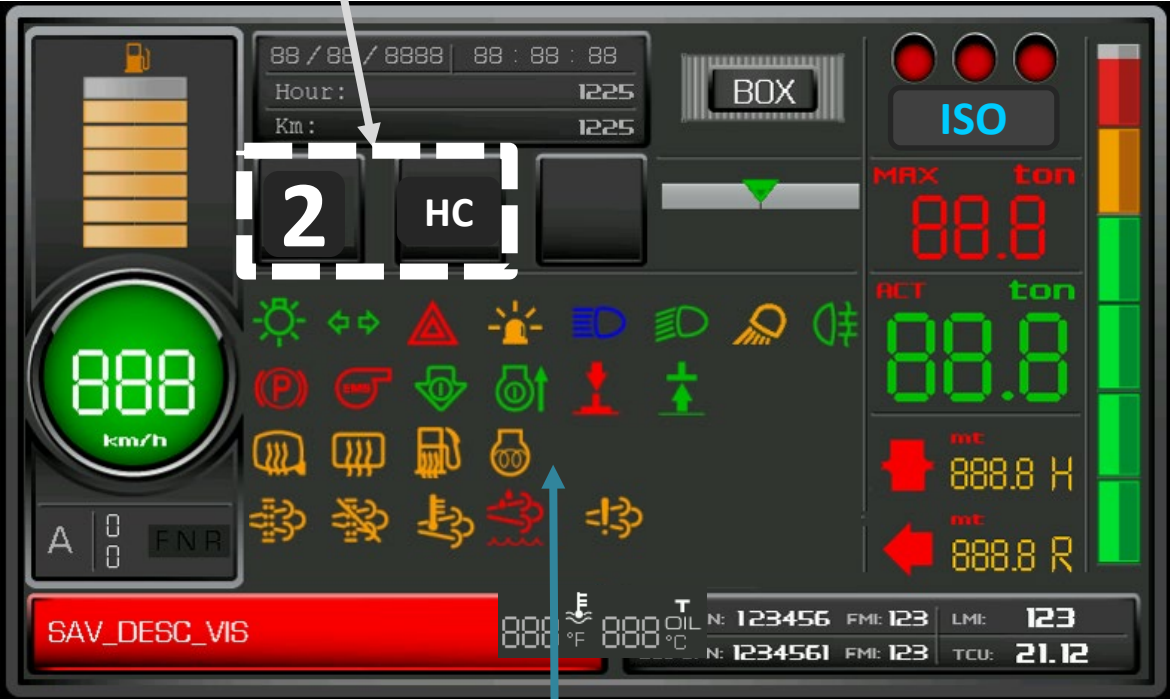
«Excellence»

«Global»

On Board Computer

Curent Stack Height of spreader

Stack Height Level of the curent spreader lift height



Indicators

Status of Each Twist-Lock

Taylor Reach Stacker Product Training (GTX/XRS)

Confidential-Taylor Machine Works, Inc - Do Not Copy or Distribute

...Commonalities



«Excellence»

«Global»

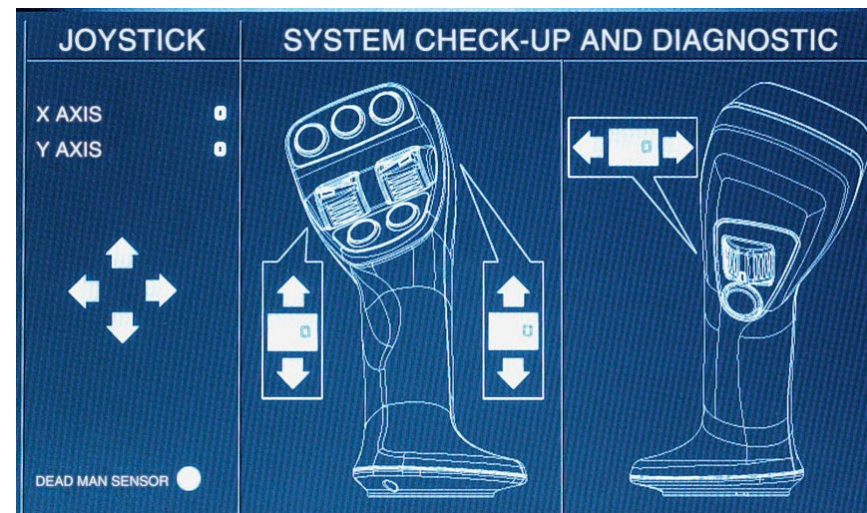
On Board Computer

Diagnostic function of the on-board computer system menu allows for easy verification of the status of all main machine components with fault detection

This is all done through the display in the cabin without the need of an error code reading device

System Can Perform Diagnostic of the following:

- Engine
- Transmission (Gearbox)
- Spreader
- Main Hydraulics
- Electric System Components and CAN Units
- LMI
- Joystick, Throttle Pedal



		Spreader							
		7	6	5	4	3	2	1	0
J2	0.x	0	7	6	5	4	3	2	1
J4	1.x	8	7	6	5	4	3	2	1
J3	2.x	8	7	6	5	4	3	2	1
J1	3.x	12	11	10	9	4	3	2	1
J1	4.x	07	16	08	15	06	14	03	13
J1	5.x	16	03	14	02	13	01	12	00
J5	6.x				12	11	10	9	8
JX	7.x								

Taylor Reach Stacker Product Training (GTX/XRS)

Confidential-Taylor Machine Works, Inc - Do Not Copy or Distribute

...Commonalities



«Excellence»

«Global»

On Board Computer

OPERATIONAL AND FUEL USAGE STATISTICS

System Can Perform Diagnostic of the following:

- Continually updating in real time
- Displays multiple categories
- Function accessible through password

OPERATIONAL STATS			
TOTALS		AVERAGES	
Working Hours	6.680	Lifts / Working Hour	12,31
Idle Hours	812	Tonnes / Working Hour	253,79
Hydraulics Work Hours	1.025	km / Working Hour	3,98
Consumed Fuel in Litres	101.046	Tonnes / Lift	20,52
Handled Containers (Lifts)	82.212	km/Lift	0,32
Lifted Load (Tonnes)	1.695.318	Idle Time per W. Hour	12%
Distance Travelled (km)	26.617	Hydraulic Work per W. Hour	15%

Taylor Reach Stacker Product Training (GTX/XRS)

Confidential-Taylor Machine Works, Inc - Do Not Copy or Distribute

...Commonalities



Electrical System

- IP67 Main electric box in a protected compartment
- All connectors are aluminum and IP67 Rated
- Vibration absorbing mounts for all components

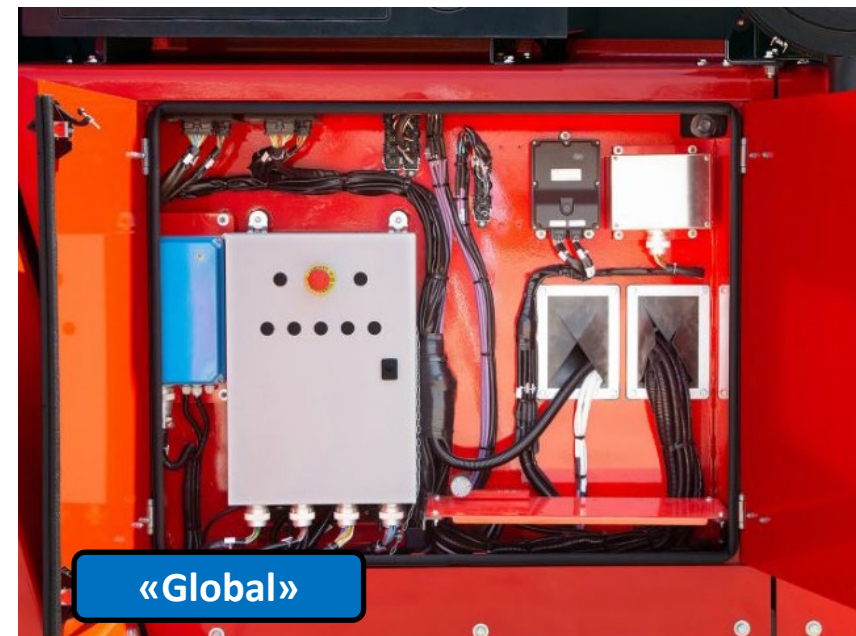


«Excellence»

«Global»



«Excellence»



«Global»

Taylor Reach Stacker Product Training (GTX/XRS)

Confidential-Taylor Machine Works, Inc - Do Not Copy or Distribute



Safety Information and Summary

Taylor Reach Stacker Product Training (GTX/XRS)

Confidential-Taylor Machine Works, Inc - Do Not Copy or Distribute

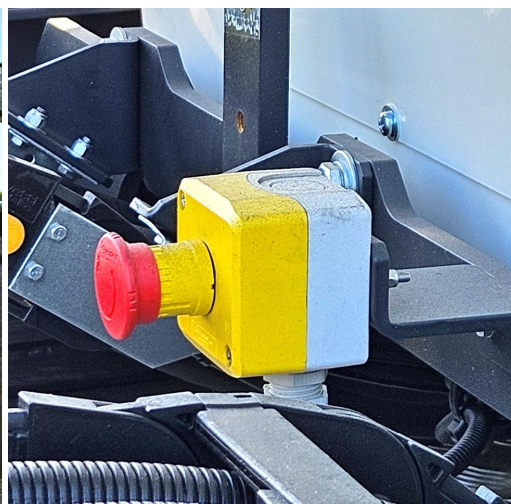
Safety



Safety Features

- Backup Warning Alarms
- Rotating LED Warning Beacons
- Seat Safety Switch (OPS)
- Battery Lock-out Switch
- Reflective Caution Stripes
- Internal and External Mirrors (heated available)
- Multiple Camera Systems Available
- Available Pedestrian Detection System
- Available Automatic Fire Suppression
- External Emergency Stop Buttons available
- Available Training Seat

...See your Taylor Sales Rep for additional options



Taylor Reach Stacker Product Training (GTX/XRS)

Confidential-Taylor Machine Works, Inc-Do Not Copy or Distribute

VISION PLUS
Pedestrian Detection



- Customizable coverage area with programmable electronic limitations.
- MD3 Display Unit with Navigation Buttons has a full graphical screen.
- Two (2) Large LED warning lights (Amber - Pedestrian Present, Red - Pedestrian In-path)
- Adjustable Audible Alarm
- Interactive menu provides access to system diagnostics, troubleshooting, settings and any system errors
- Menu includes help pages to explain alert types and system limitations
- A counter for both pedestrian detection and in-path detection is available through the display
- Detection log available for download with IQAN software



A Pedestrian Detection System
designed to aid industrial vehicle operators in monitoring the
presence of pedestrians in the work area.

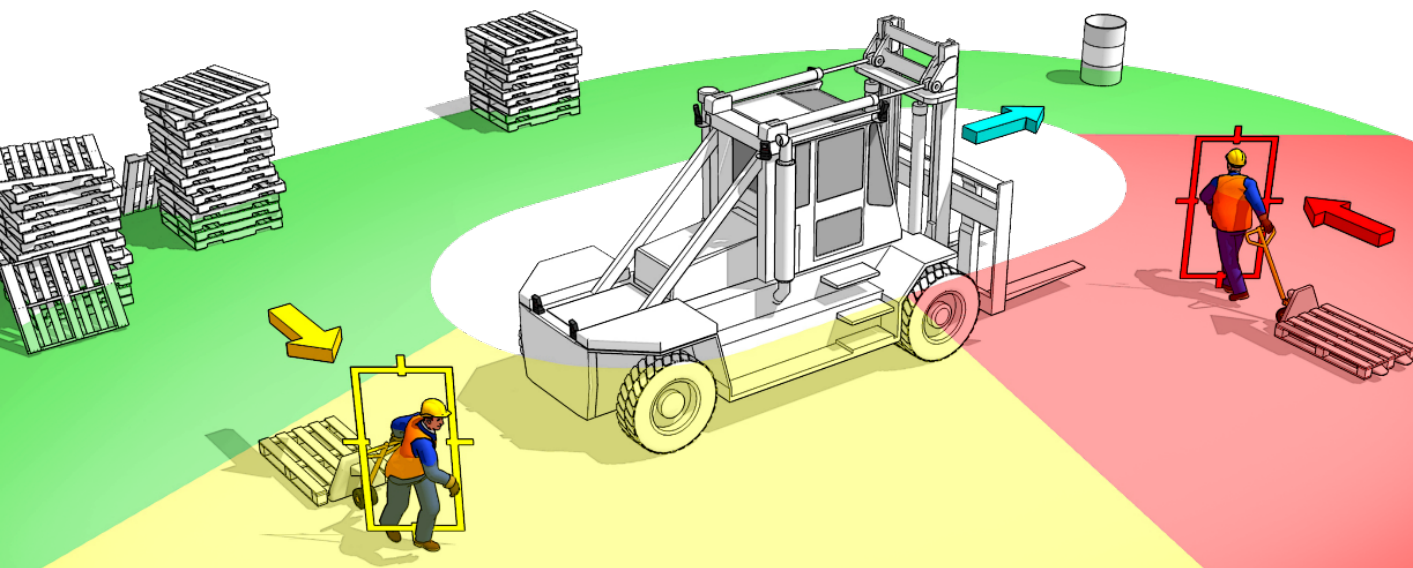
Taylor Reach Stacker Product Training (GTX/XRS)

Confidential-Taylor Machine Works, Inc-Do Not Copy or Distribute

VISION PLUS
Pedestrian Detection



1. No Devices or Tags are required to be worn by the pedestrians
2. Locates, identifies and tracks multiple pedestrians
3. Ignores all objects other than pedestrians
4. Two meaningful warnings to the operator (audible & visible)
5. Up to 360° of coverage area (depending on vehicle type... see chart)
6. Can be retro-fitted on older trucks



Taylor Reach Stacker Product Training (GTX/XRS)

Confidential-Taylor Machine Works, Inc - Do Not Copy or Distribute

Summary:



«Global»



GTX-9968 (Global Model): *Port Industry/General*

Capacity: First Row 4-High 99,000 lbs

Capacity: First Row 5-High 88,000 lbs

Wheelbase: 256"

Spreader: **ELME** 20/40 (w/Powered Pile Slope)

Tires: 18.00x25

«Excellence»



«Excellence»



XRS-1075 & XRS-1080 (Excellence Models): *Port Industry/General*

Capacity: First Row 4-High 101,400 lbs

Capacity: First Row 5-High 92,000 lbs

Wheelbase: 256"

XRS-1075 Spreader: Taylor/CVS 20/40 (w/Powered Pile Slope)

XRS-1080 Spreader: Taylor/CVS 20/40 (w/Powered Pile Slope & WTP)

Tires: 18.00x33

«Excellence»



«Excellence»



XRS-1090 & XRS-8877 (Excellence Models): *Intermodal/Rail*

Capacity: First Row 4-High 101,400 lbs

Capacity: First Row 5-High 92,600 lbs

Wheelbase: XRS-1090 (295") Features Front Stabilizers and 18.00x33 Tires

Wheelbase: XRS-8877 (315") Features Front Stabilizers and 18.00x33 Tires

XRS-1090 Spreader: Taylor/CVS 20/40 (w/Powered Pile Slope & WTP)

XRS-8877 Spreader: **ELME** 20/40 (w/Powered Pile Slope, WTP, and LEGS)

Taylor Reach Stacker Product Training (GTX/XRS)

Confidential-Taylor Machine Works, Inc - Do Not Copy or Distribute

Market Data



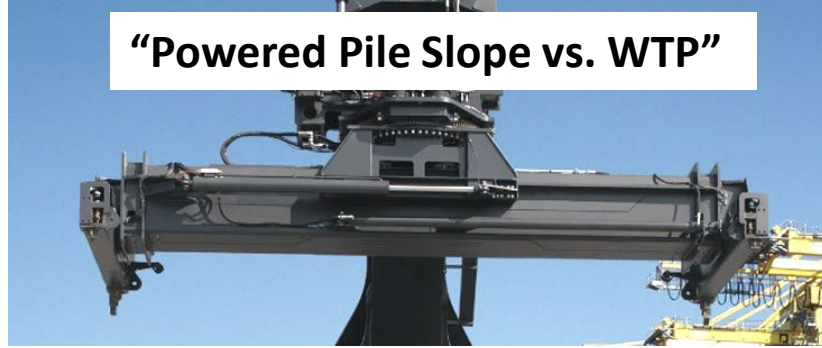
«XRS-1075»



«XRS-1080»



“Powered Pile Slope vs. WTP”



Additional Market Data based on past Taylor Sales (Spreaders):

Reachstackers (General Port Spec): 12% of past Taylor's were equipped with WTP

- Based on this past sales information, we would predict that (+/-)85% of US Reachstacker sales into General Port applications (not intermodal/railroad), would be quoted with the **XRS-1075**.
- The other 15% of US Reachstacker sales into General Port applications (not intermodal/railroad), would be quoted with the **XRS-1080** with WTP.

Loaded Handlers (General Port Spec): 22% of past Taylor's were equipped with WTP

- Based on this past sales information, we would predict that (+/-)75% of US Loaded Handler sales into General Port applications (not intermodal/railroad), would be quoted with the standard GTX spreader (with Powered Pile Slope)
- The other 25% of US Loaded Handler sales into General Port applications (not intermodal/railroad), would be to be optioned to the WTP Spreader



Taylor **GTX/XRS-Reach Stacker** Product Training
Technical/Competitive Analysis
-Sales Department-
2024