



PRODUCT UPDATE 04.2024

NEW TELEHANDLERS

NEW ATTACHMENTS

NEW OPTIONS



HTH 12.10

NEW MACHINE

The HTH 12.10 is designed to have the same family feeling as the HTH 10.10, but it has a load capacity of 12 tons and a maximum working height of 10 m.

Thanks to the new counterweight it is now possible to have a load capacity of 9 tons at maximum height, and 4 tons at maximum outreach.

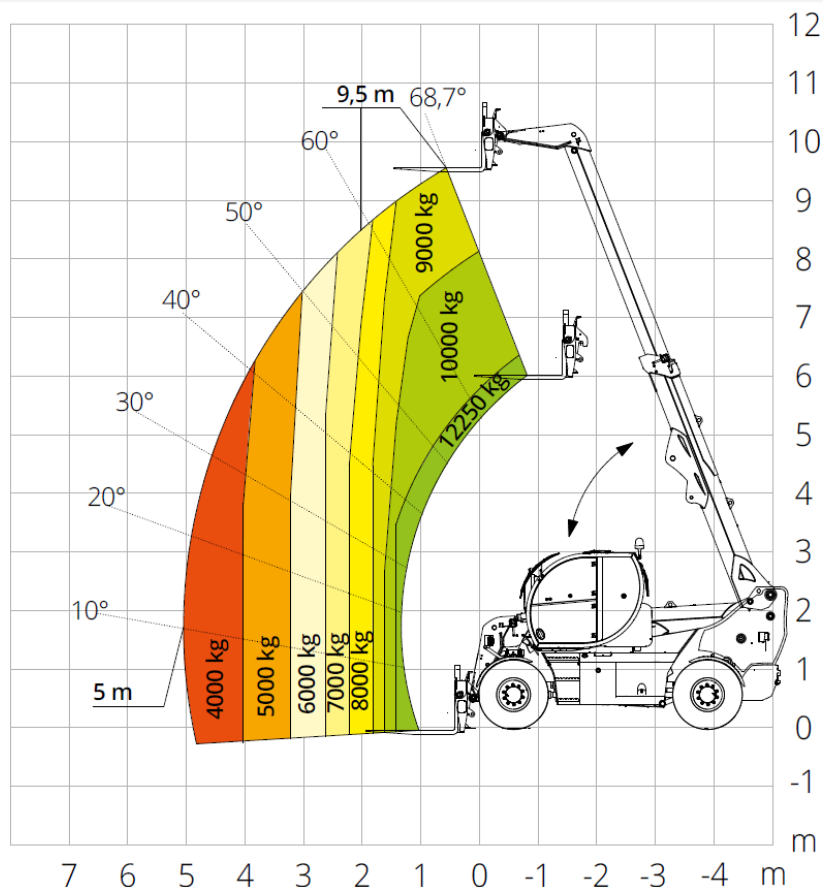
The HTH 12.10 can use all the attachments developed for the HTH 10.10 in addition to new dedicated fork carriage.

MAGNI
TELESCOPIC HANDLERS



HTH 12.10

LOAD CHART



MAX. LIFTING
HEIGHT

9,5 m



MAX. REACH

5 m



MAX. LIFTING
CAPACITY

12.250 kg

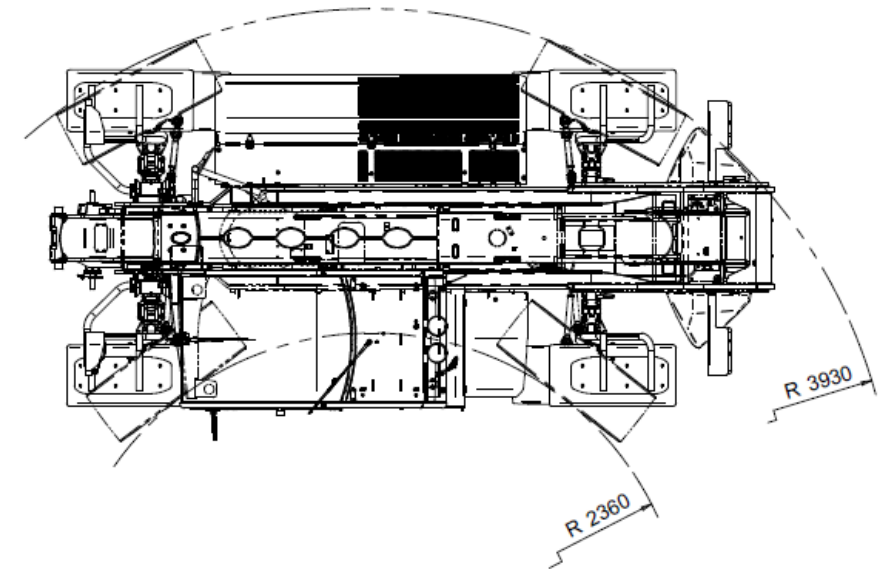
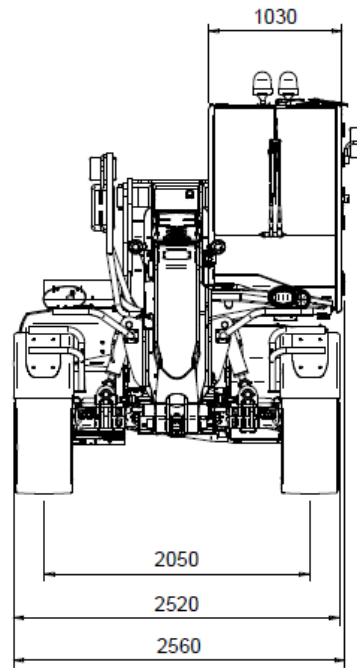
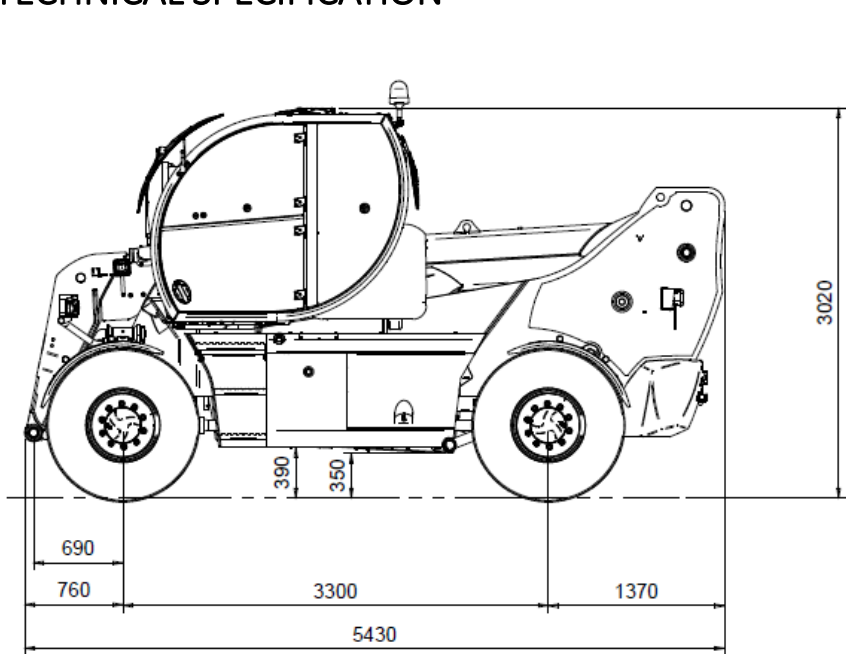
ON TIRES

2024 © MAGNI TELESCOPIC HANDLERS SRL – Via Magellano, 22 – 41013 Castelfranco Emilia (MO), Italy

For internal use only. The information in this document is subject to change without notice

HTH 12.10

TECHNICAL SPECIFICATION



- **ENGINE:** Deutz TCD 3,6 L4 Stage V
- **POWER:** 100 kW / 136 hp
- **GEARS:** 2/2
- **MAX. TRAVEL SPEED:** 40 km/h*

- **LENGTH:** 5430 mm
- **WIDTH:** 2520 mm
- **WEIGHT:** 14.400 kg

*Depending on market regulations

NEW RTH ELEVATING CAB



RTH EC (Elevating Cab)

A NEW VERSION



The RTH 6.31 EC is the first model available with an elevating cab that will be followed by the RTH 6.22 and RTH 6.26.

This model is equipped with a cabin **with the maximum safety standards ROPS/FOPS Level II**. These special models will join the current RTH models with fixed cab.

This new feature aims to further **improve visibility and safety** in all contexts which require extremely high precision and monitoring of the handled load, such as jobs using the tree-cutting attachment.



RTH Elevating Cab

MODELS AVAILABLE



RTH 6.22



RTH 6.26



RTH 6.31

MAXIMUM LIFTING CAPACITY 6 t



FROM 22 m TO 31 m



FROM 18,5 m TO 26,9 m

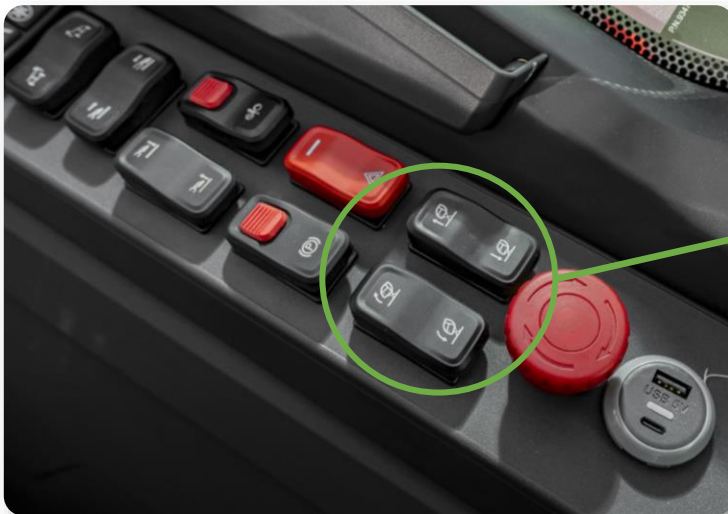


RTH Elevating Cab

FEATURES

To enable the use of this function, the cabin is mounted on a **hydraulic mobile support**, and using two buttons it can be raised and tilted.

With a button is possible to raise the cab **up to 1.5 m** and with the other you can acquire an additional degree of freedom with **inclinations from 0° to +16°**.



CAB TILTING

CAB ELEVATION

+ 1,5 m

+ 16°



TH 3.6

THE FIRST COMPACT FIX TELEHANDLER



The **TH 3.6** will be equipped with a **new compact cab** that will give the operator **total visibility**, allowing him to observe the load both fully lowered and suspended.

Accessible via the 7-inch touch screen, the Magni Combi Touch System (**MCTS**) on-board software grants complete control of the machine for a smooth and pleasant user experience via icon-based navigation.

In addition, the TH 3.6 will be provided with the 'Load Moment Indicator' (**LMI**), an extremely sophisticated and precise **anti-tipping mechanism**, which allows constant monitoring of the vehicle's movements to avoid any kind of overloading.



TH 3.6

2024 TH RANGE



TH 3.6



TH 5.8 P



TH 7.10
TH 7.10 P



TH 4,5 .15
TH 4,5 .15 P



TH 4,5 .19
TH 4,5 .19 P



TH 5,5 .15
TH 5,5 .15 P



TH 5,5 .19
TH 5,5 .19 P



TH 5,5.24



TH 6.20

FROM 3 t TO 7 t



FROM 6 m TO 24 m



FROM 3 m TO 19 m



NEW TH 3.6 COMPACT CABIN



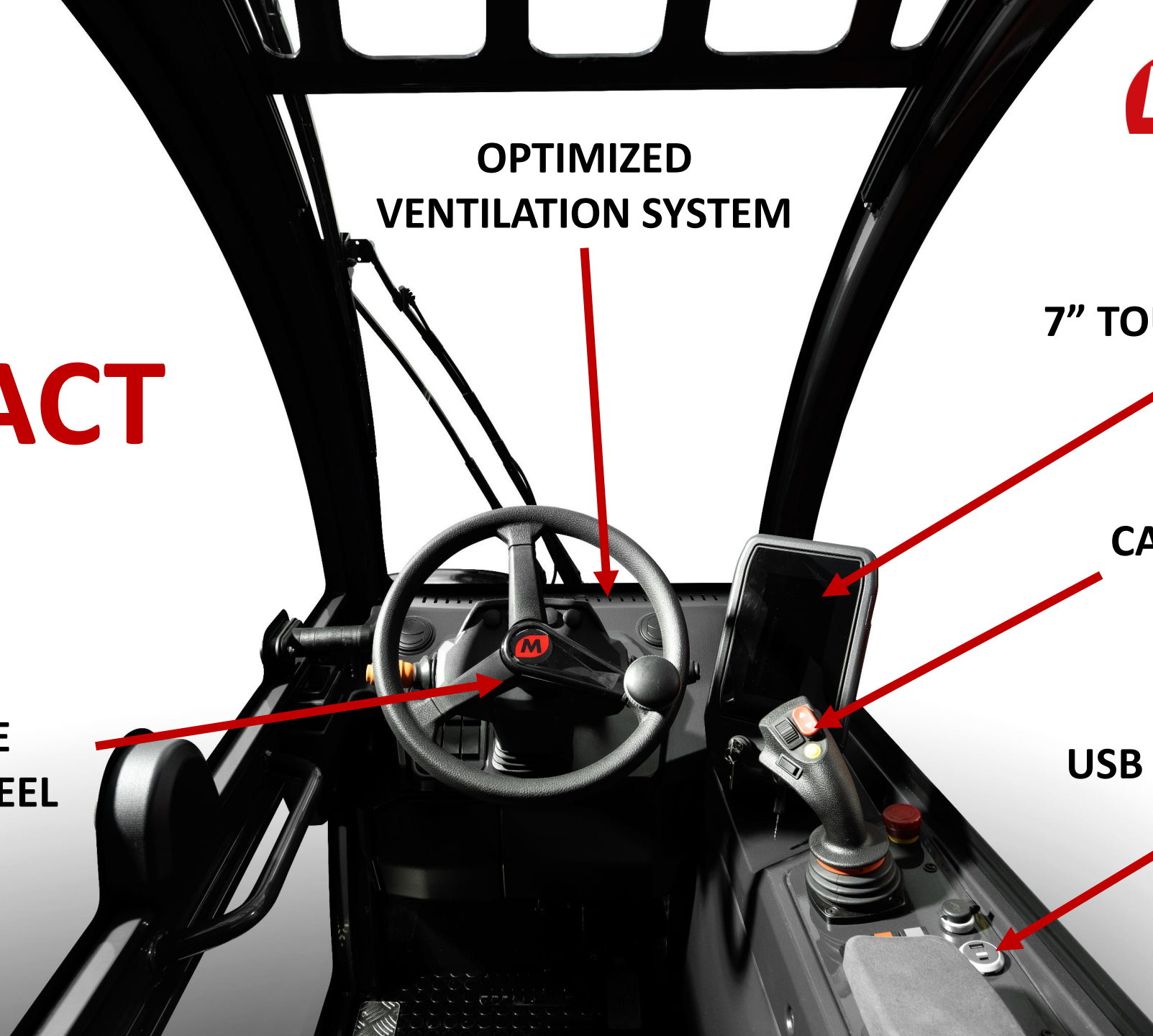
OPTIMIZED
VENTILATION SYSTEM

7" TOUCHSCREEN

CANBUS JOYSTICK

USB / USB-C PORTS

ADJUSTABLE
STEERING WHEEL



TH 3.6

SOFTWARE



The only compact telehandler in the market with LMI.
This system allows constant monitoring of the vehicle's
movements to avoid any overloading.

LMI

MCTS is available on the TH 3.6 with most of the features
as on the high-end THs;

MCTS



Therefore, it is the most advanced software
for fix telescopic handlers;



*Images are for illustration purposes only.

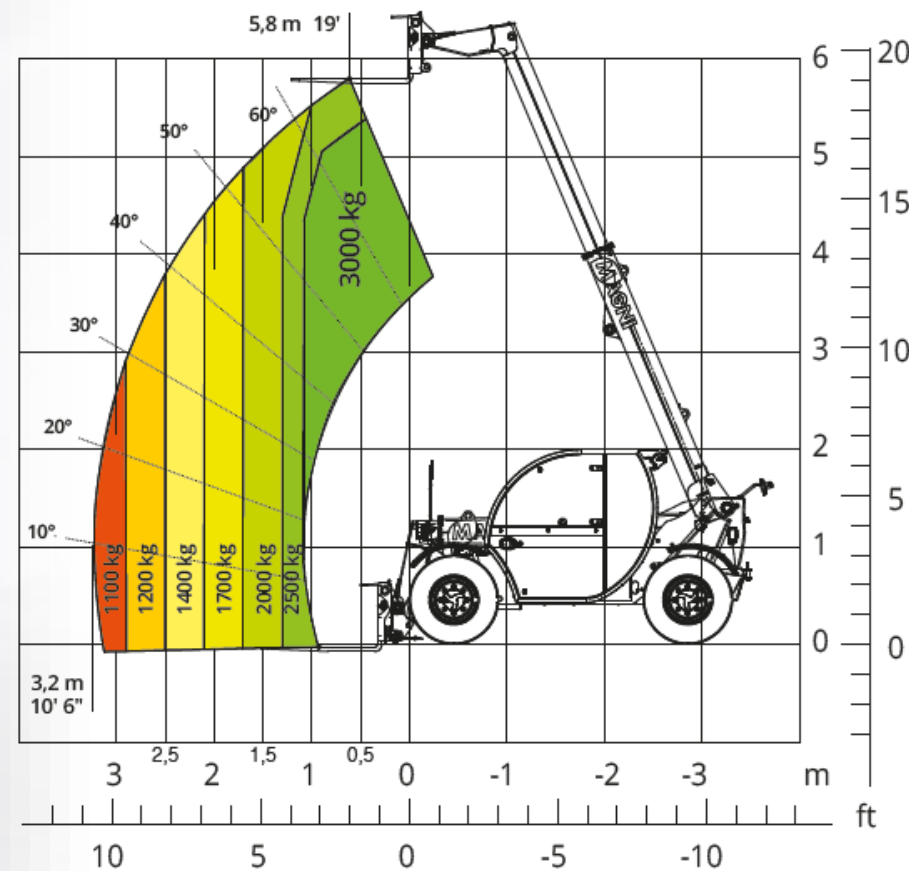
TH 3.6

THE FIRST

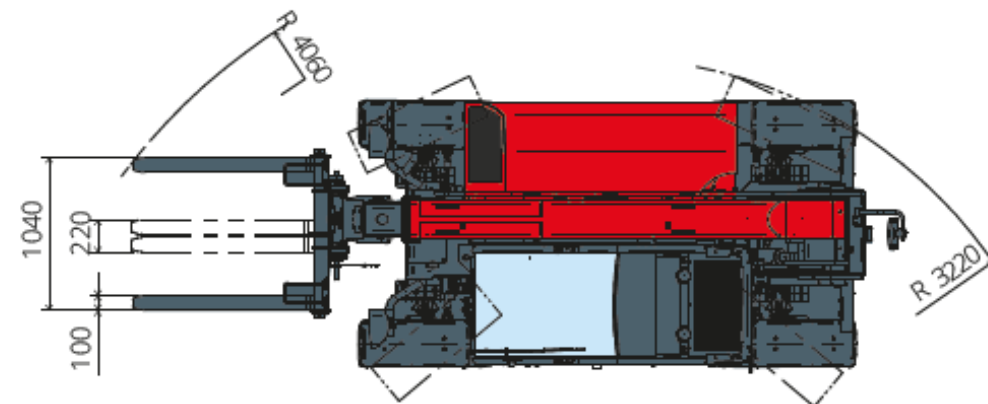
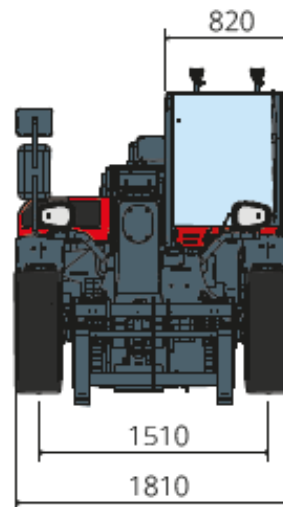
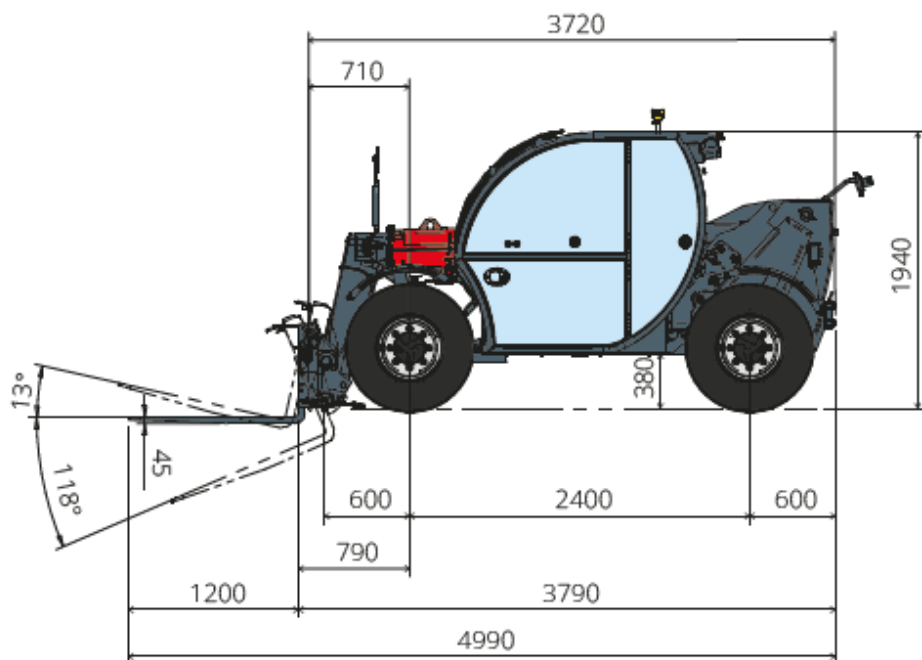
COMPACT



LOAD CHART



TECHNICAL SPECIFICATION



- **ENGINE POWER:** 55,4 kW / 75 hp
- **GEARS:** 2/2
- **MAX. TRAVEL SPEED:** 35 km/h
- **TRANSMISSION TYPE:** Hydrostatic

- **LENGHT:** 3600 mm
- **WIDTH:** 1810 mm
- **WEIGHT:** 4.850 kg

TH 3.6

TRANSPORT



Truck

ISO 40 Container



UP TO 3 THs IN A SINGLE TRANSPORT

*Transport with standard fork carriage

Orders and Pre-orders



HTH 12.10



- Orders from → 22.04.2024
- Deliverable from → 07.2024

RTH 6.31 EC



- Pre-Orders from → 22.04.2024
- Deliverable from → Q4 2024*

TH 3.6



- Pre-Orders from → 22.04.2024
- Deliverable from → 01.2025*

*The units will be allocated according to the pre-orders entry date.

SUMMARY



NEW TELEHANDLERS

NEW ATTACHMENTS

NEW OPTIONS

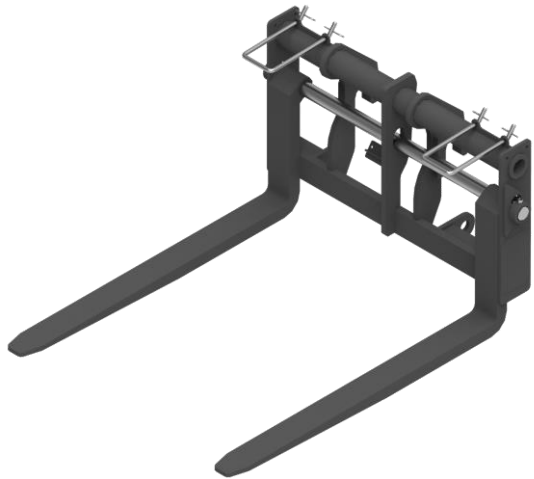


TH 3.6 Attachments

TCOMPACT DEDICATED ATTACHMENTS



ATT-03-016



Floating fork carriage 3T

ATT-05-004



Hook 3T

ATT-07-005



1000 L bucket with weld-on edge

3D – Film Handler 2.5T



New **ATT-06-002** 3D-Film Handler is designed for the film industry and features a surface designed to support equipment such as LED panels or light diffusers used in studio or outdoor filming.

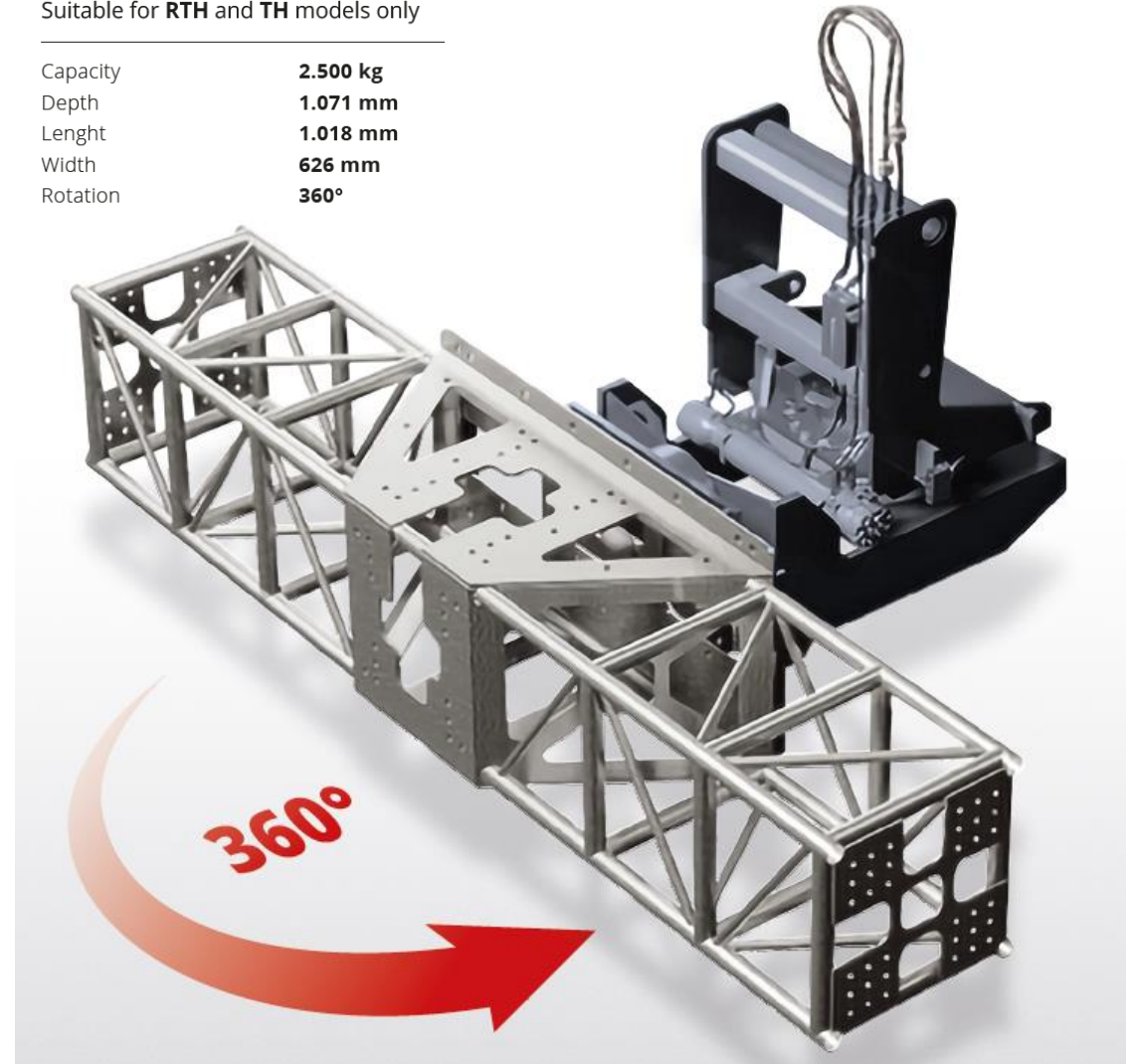
It offers a capacity of 2.500 kg and 360° continuous rotation.

Suitable for RTH and TH models only (except TH 5.8P).

ATT-06-002

Suitable for **RTH** and **TH** models only

Capacity	2.500 kg
Depth	1.071 mm
Length	1.018 mm
Width	626 mm
Rotation	360°



APPLICATIONS:



Construction



Logistics



Events and
Cinemas

Tilting Rotating FEM fork carriage 5T

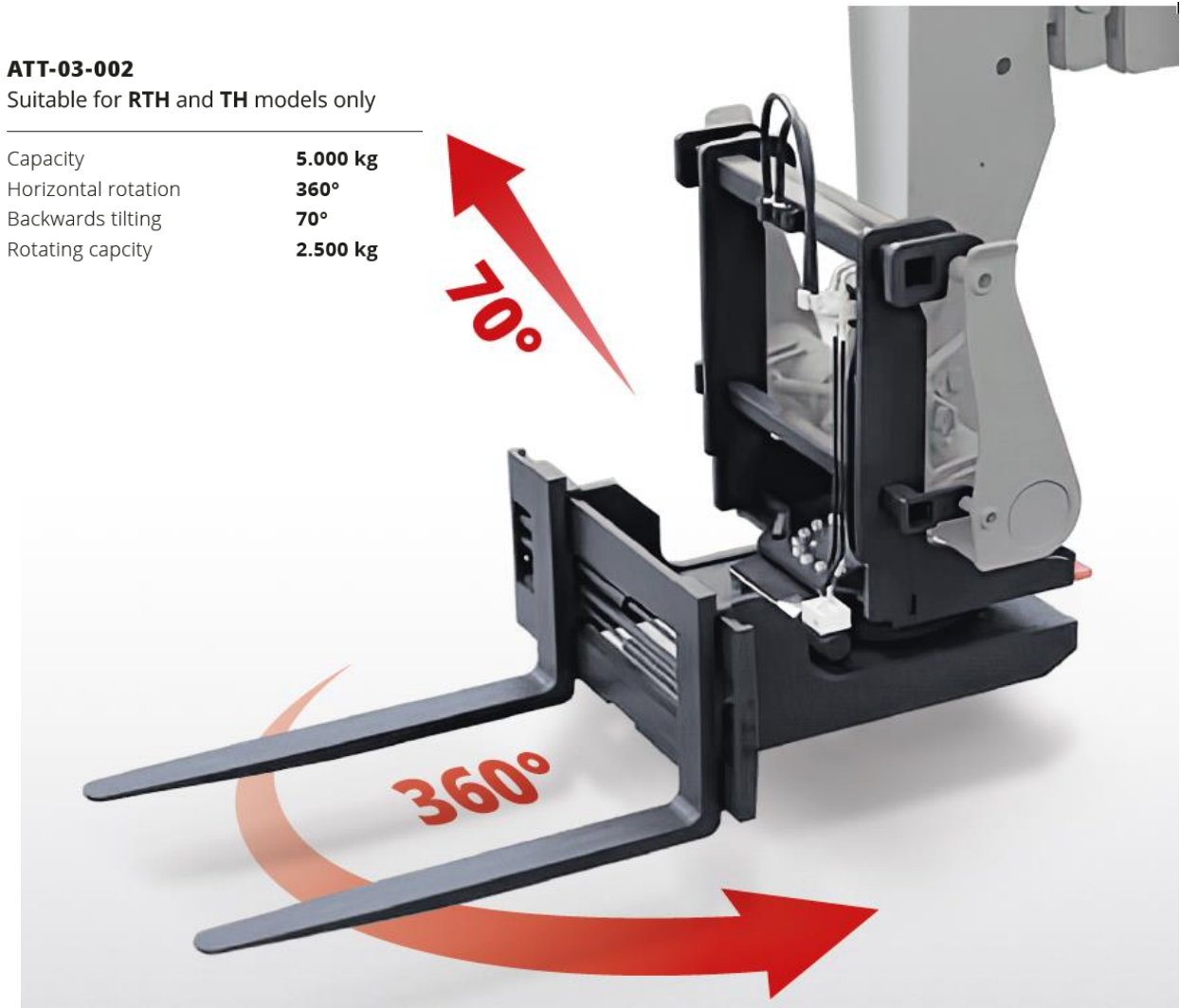
New **ATT-03-002** tilting rotating forks are designed for handling bulky materials in confined spaces. Unlike standard forks, they can rotate and tilt, allowing the load to be oriented during loading and unloading. They offer a front capacity up to 5.000 kg, a rotated capacity up to 2.500 kg, 360° continuous rotation and tilt up to 70°.

Suitable for RTH and TH models only (except TH 5.8P).

ATT-03-002

Suitable for **RTH** and **TH** models only

Capacity	5.000 kg
Horizontal rotation	360°
Backwards tilting	70°
Rotating capacity	2.500 kg



APPLICATIONS:



Construction



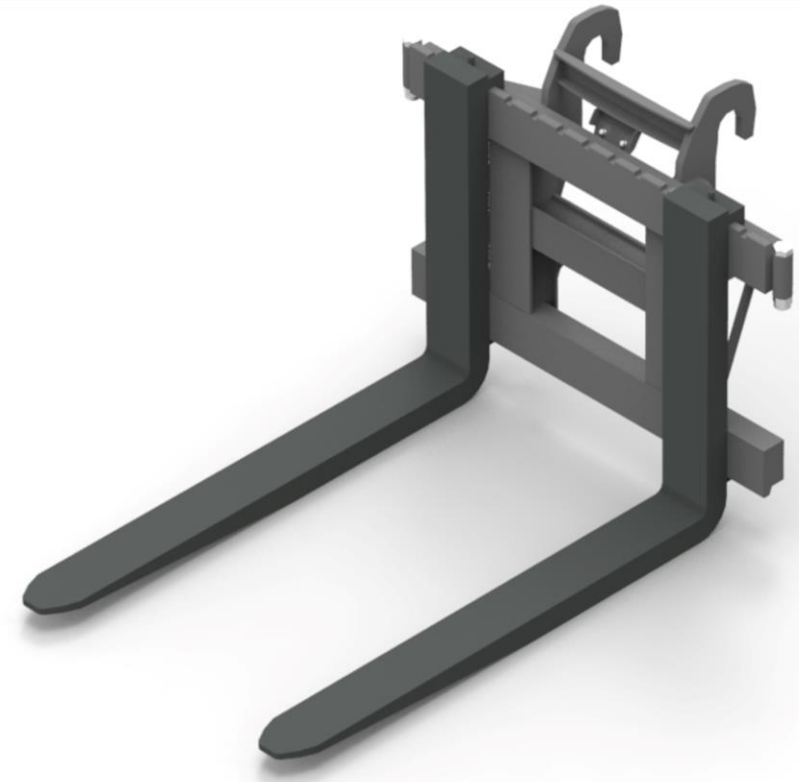
Logistics

FEM Fork Carriage 8T



Following the launch of the new RTH with 8 ton capacity, the FEM fork carriage dedicated to these machines is now available.

ATT-03-037 suitable for RTH 8.27, RTH 8.35 and RTH 8.39.



APPLICATIONS:



Construction



Logistics

					
8,000 kg	1,200 mm	280 mm (min) - 1,310 mm (max)	✗	✗	✓

Winch fitted at the base of the boom

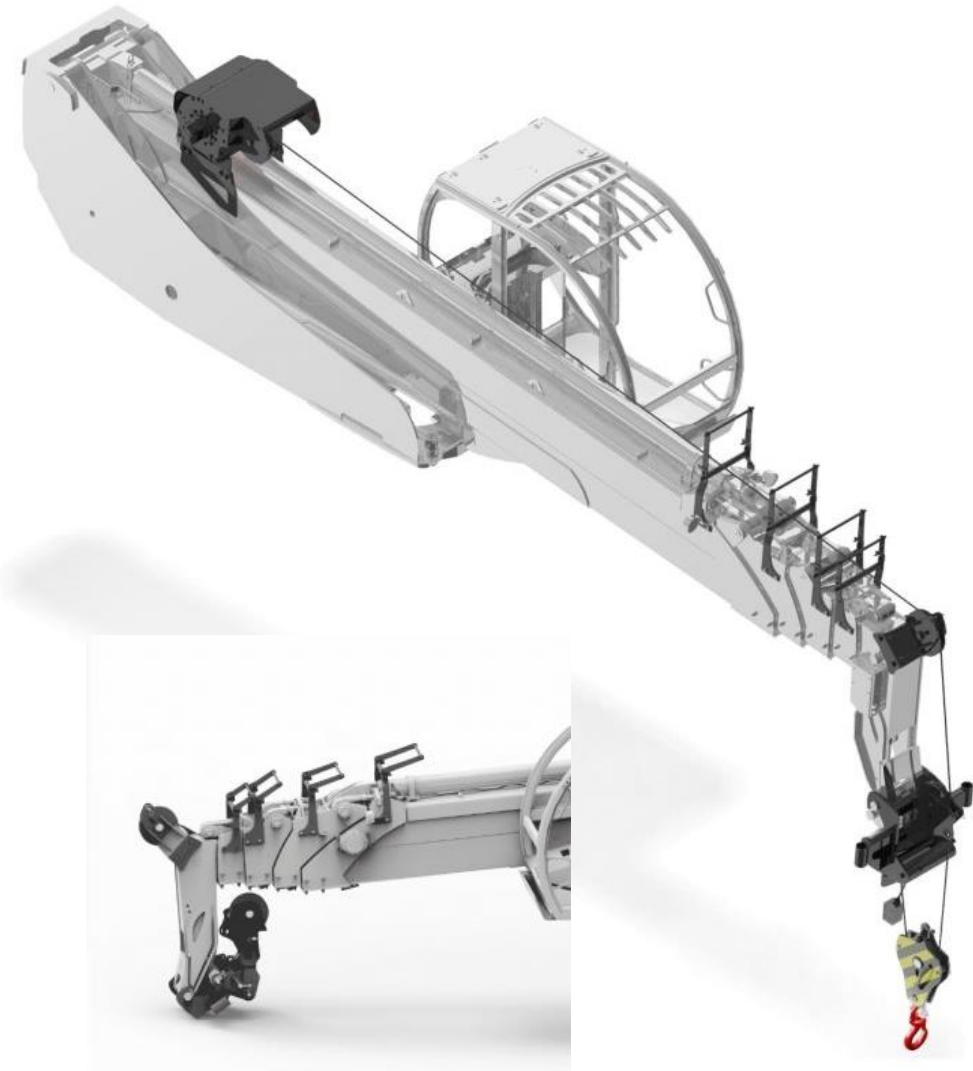
RTH 8.27



Now also available on **RTH 8.27** this winch with swivelling type-approved hook, which can be configured to two capacities: **8.000 kg double pull and 4.000 kg single pull.**

This attachment can manually rotate the articulated boom at the head of the boom, fitted with a pulley, taking it from the work position to the rest/transport position.

APPLICATIONS:



Fork Carriages 12T

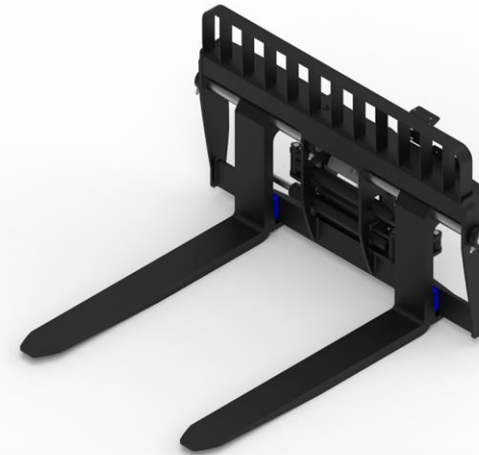
ATT-03-013



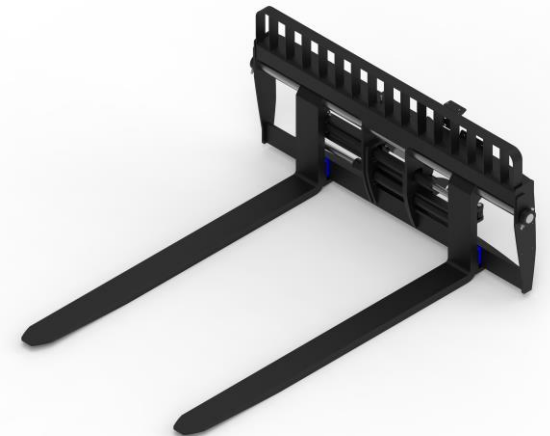
ATT-03-050



ATT-03-051



ATT-03-052



Floating fork carriage 12.2T
(STANDARD)

[width max 1900mm – forks 1500mm]

Floating fork carriage 12.2T
(WITH LONG FORKS)

[width max 1900mm – forks 2500mm]

Floating fork carriage 12.2T
(WITH FORKS POSITIONER)

[width max 1900mm – forks 1500mm]

Floating fork carriage 12.2T
(WITH LONG FORKS AND POSITIONER)

[width max 1900mm – forks 1500mm]



These fork carriages are suitable only for HTH 12.10

SUMMARY



NEW TELEHANDLERS

NEW ATTACHMENTS

NEW OPTIONS

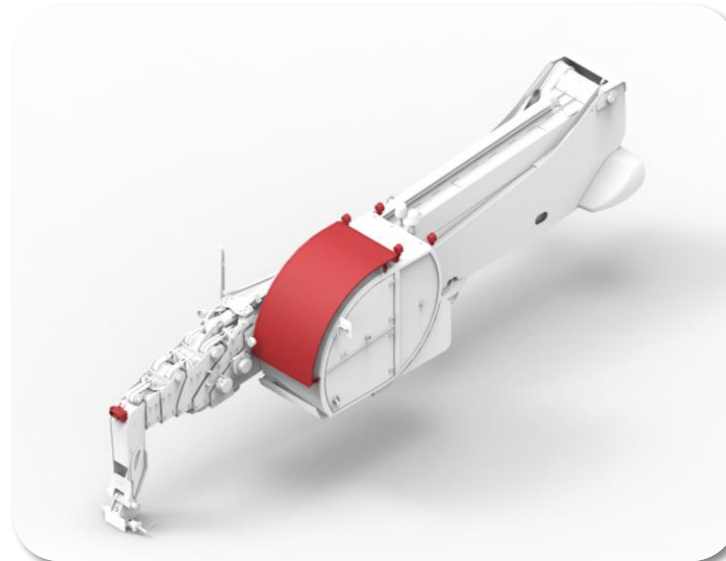


NEW Pre-arrangement for tree cutting device



New OPT-05-001

For use the machine with the tree cutting attachment (ATT-08-001), it is necessary to order the OPT-05-001 pre-arrangement for tree cutting device. The new kit already includes the remote control for tree cutting with display. The new option will be **36% cheaper than the previous** Kits composed by Pre-arrangement + Remote control for tree cutting. The **Tree cutter price** (ATT-08-001) has been also revised and **lowered by 18%**.



- Dedicated right joystick;
- Cameras on boom head right mirror + monitor in cab;
- Protection grid for the windshield;
- Led work lights on the cab (front and rear);
- Dedicated air filter in the cab.

- Remote control for tree cutting operations with display.

